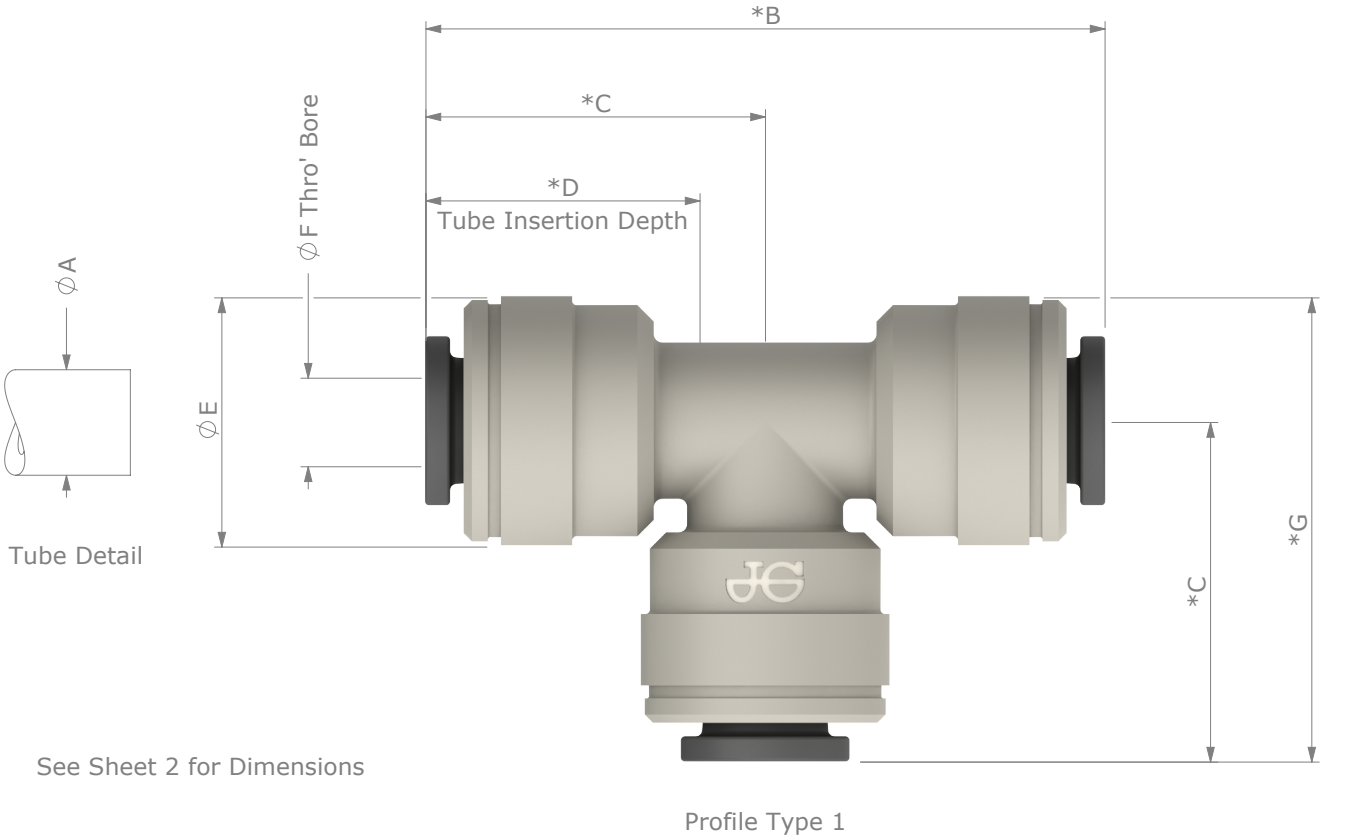


The John Guest range of Equal Tee Connectors are suitable for applications involving foodstuffs, potable liquids, air & inert gases.

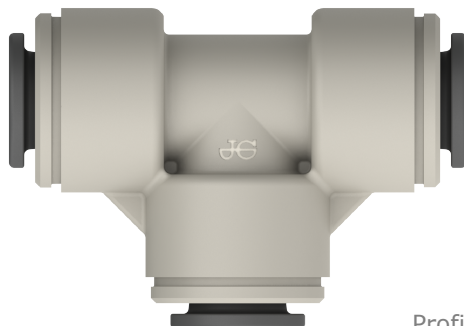


*With Collet(s) in release position

Dimensions in Inches & [mm]

Parts List			
Part Description	Material	Part Description	Material
Body	Acetal Copolymer (Unfilled), Light Grey	O' Rings	Nitrile, Black
Collets	Acetal Copolymer (Unfilled), Dark Grey & Stainless Steel		

Technical Information			
Working Pressures & Temperatures			Applications
Potable Liquids & Air	5/32" to 5/16"	3/8" to 1/2"	Drinks Dispense ✓
34°F [1°C]	230psi [16bar]	150psi [10bar]	Potable Liquid ✓
68°F [20°C]	230psi [16bar]	150psi [10bar]	Pneumatics ✓
150°F [65°C]	150psi [10bar]	100psi [7bar]	
Air			
-4°F [-20°C]	230psi [16bar]	150psi [10bar]	



Profile Type 2



Profile Type 3

Product Number	Size	A Tube O/D	B	C	D	E	F	G	Profile Type
PM0204S	5/32"	0.156 +0.001 / -0.003 [3.97 +0.03 / -0.07]	1.38 [35.2]	0.69 [17.6]	0.56 [14.3]	0.51 [13.0]	0.10 [2.5]	0.95 [24.1]	3
PI0206S	3/16"	0.188 +0.001 / -0.003 [4.78 +0.03 / -0.07]	1.38 [35.2]	0.69 [17.6]	0.56 [14.3]	0.51 [13.0]	0.12 [3.0]	0.95 [24.1]	3
PI0208S	1/4"	0.250 +0.001 / -0.004 [6.35 +0.03 / -0.10]	1.55 [39.3]	0.77 [19.6]	0.62 [15.7]	0.59 [15.0]	0.21 [5.3]	1.07 [27.1]	1
PM0208S	5/16"	0.313 +0.001 / -0.004 [7.94 +0.03 / -0.10]	1.66 [42.0]	0.83 [21.0]	0.66 [16.7]	0.70 [17.8]	0.25 [6.3]	1.18 [29.9]	2
PI0212S	3/8"	0.375 +0.001 / -0.004 [9.53 +0.03 / -0.10]	2.00 [50.7]	1.00 [25.4]	0.78 [19.7]	0.78 [19.8]	0.30 [7.6]	1.39 [35.3]	1
PI0216S	1/2"	0.500 +0.001 / -0.004 [12.7 +0.03 / -0.10]	2.40 [61.0]	1.20 [30.5]	0.91 [23.0]	0.91 [23.0]	0.38 [9.6]	1.65 [42.0]	1