



Jonti-Craft® Mobile Twin Storage Island - with Colored Trays - 6951JC

Item: 6951JC



48.5" W x 29" D x 29" H

Ship Weight: 176 lbs

Warranty: Lifetime

Fully Assembled

Made in United States



Two cubbie-tray cutouts and trays with lids allow tabletop art projects, experiments, or storage. E-Z to clean white laminate worktop. One side features ten optional cubbie-trays and shelves. Seven shelves and four optional tubs are on the other side. KYDZSafe® edges. KYDZStrong® construction. KYDZTuff® finish. Standard bin colors are a mix of red, blue, yellow, green and orange. Contact your Jonti-Craft dealer for specific bin colors. MAXBracket®.

 KYDZ Safe.

 KYDZ Strong.

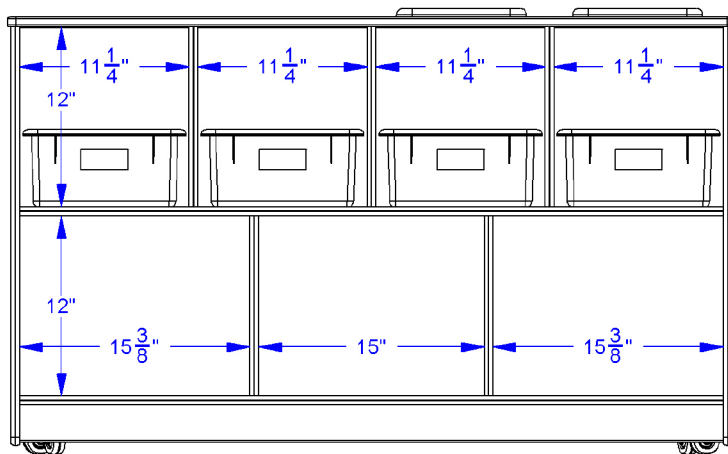
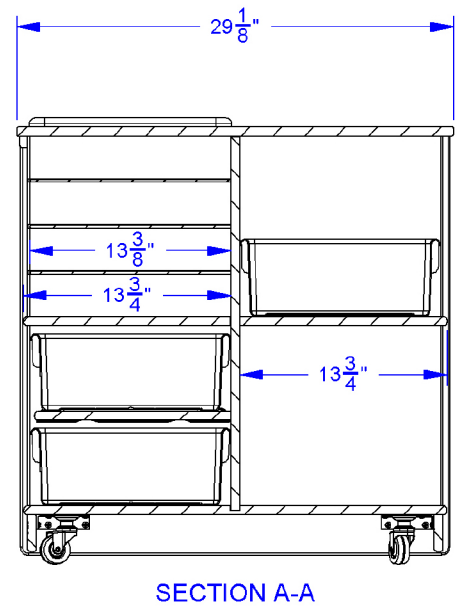
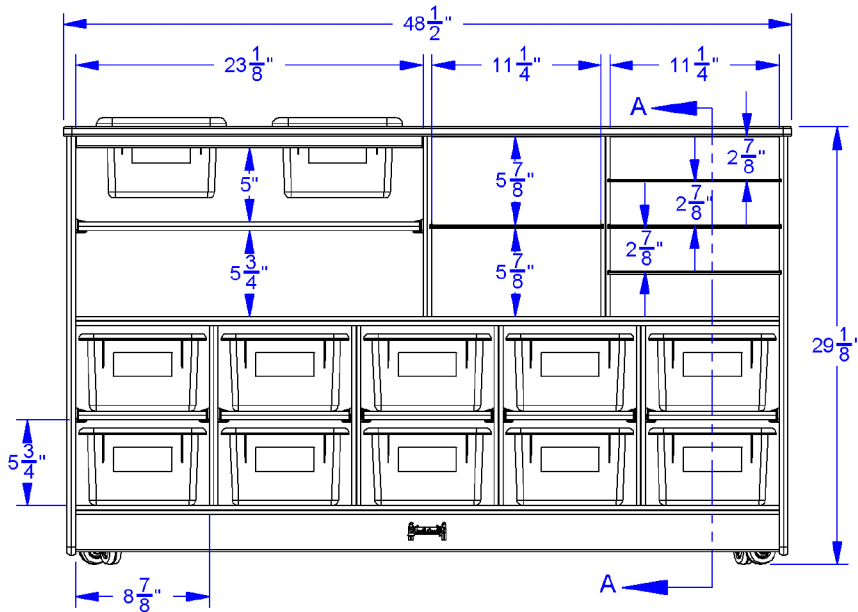
 KYDZ Tuff.

 MAX Bracket.





JonTi-Craft® Mobile Twin Storage Island - with Colored Trays - 6951JC



JonTi-Craft Flagship Features Include:

KYDZSafe corners & edges are rounded to minimum of $\frac{1}{2}"$ radius. KYDZSafe kickplates prevent pinching & lost objects. KYDZSafe 15" depth adds increased stability & 25% more storage than competitor's 12" depth. KYDZStrong materials are guaranteed to last. KYDZStrong dowel-pin construction adds stability & strength. KYDZStrong Recessed backs give stability & structural integrity. KYDZTuff acrylic finish is ultra-long lasting and resists yellowing. The UV coating is environmentally friendly and easy to clean with an extra-strong resistance to daily wear and common cleaning products, like bleach and nail polish remover. MAXBrackets are heavy-duty casters that make it easy to support and move furniture. Wheels are made of hard, non-marking rubber and a three-point-connection bracket adds triangular strength.