



Jonti-Craft® Storage Cabinet - Mobile - 5950JCWC



Get maximum storage and security for any learning environment with these lockable cabinets. One fixed center shelf and two shelves that adjust in 1 1/4" increments make it easy to customize your storage. All shelves span the width of the unit and the center shelf features a magnetic catch. Full-length KYDZHinges® mean no pinched fingers and super-durable doors. Lock-n-key included. KYDZSafe® edges. KYDZStrong® construction. KYDZTuff® finish. KYDZHinges®. Heavy-duty, locking casters for mobility. GREENGUARD Gold certified. CARB II & CPSIA compliant.

Item: 5950JCWC

36" W x 24" D x 76" H

Ship Weight: 209 lbs

Warranty: Lifetime

Fully Assembled

Made in United States

 KYDZ Safe.

 KYDZ Strong.

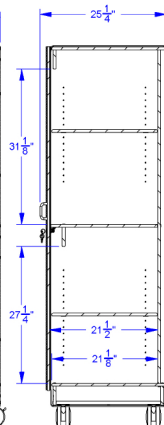
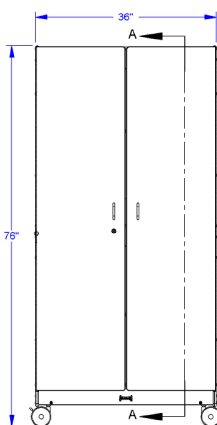
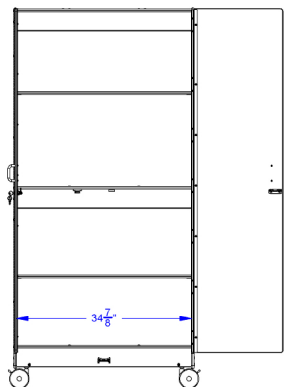
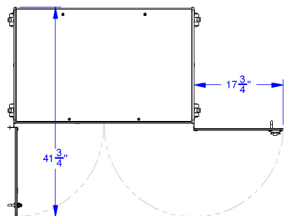
 KYDZ Tuff.

 KYDZ Hinges.





Jonti-Craft® Storage Cabinet - Mobile - 5950JCWC



SECTION A-A

Jonti-Craft Flagship Features Include:

KYDZSafe corners & edges are rounded to minimum of 1/2" radius. KYDZSafe kickplates prevent pinching & lost objects. KYDZSafe 15" depth adds increased stability & 25% more storage than competitor's 12" depth. KYDZStrong materials are guaranteed to last. KYDZStrong dowel-pin construction adds stability & strength. KYDZStrong Recessed backs give stability & structural integrity. KYDZTuff acrylic finish is ultra-long lasting and resists yellowing. The UV coating is environmentally friendly and easy to clean with an extra-strong resistance to daily wear and common cleaning products, like bleach and nail polish remover. KYDZHinges piano hinges prevent pinching. KYDZHinges are attached with no less than nine screws and allow doors to open to 270 degrees.