



JonTi-Craft® Stacking Open Lockers - 4687JC



Open lockers for easy access. Individual lockers are 10.5" wide x 12.5" deep x 19.5" high. Stackable up to three high. Two stacked are 46" and three high are 67" high. Stacked lockers must be fastened to a wall. KYDZSafe® edges. KYDZStrong® construction. KYDZTuff® finish. Stationary. Recommended wall fasteners included.

Item: 4687JC

48.5" W x 15" D x 24" H

Ship Weight: 72 lbs

Warranty: Lifetime

Fully Assembled

Made in United States

 KYDZ Safe.

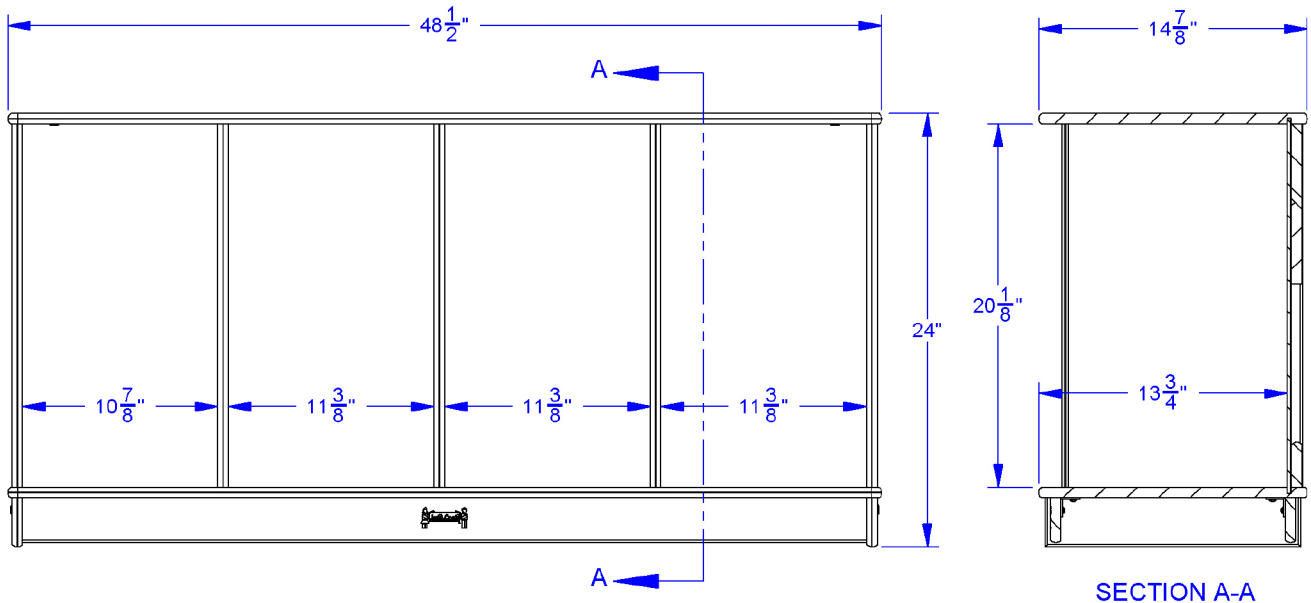
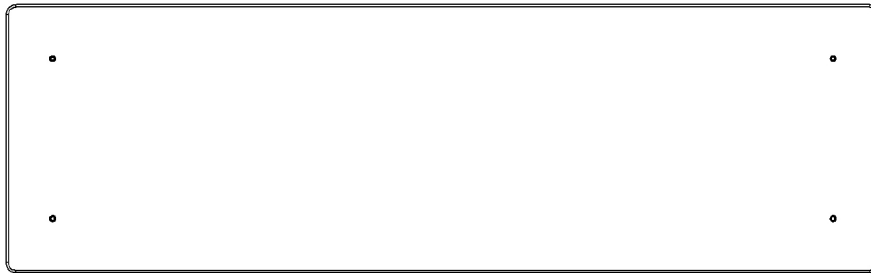
 KYDZ Strong.

 KYDZ Tuff.





JonTi-Craft® Stacking Open Lockers - 4687JC



SECTION A-A

JonTi-Craft Flagship Features Include:

KYDZSafe corners & edges are rounded to minimum of $\frac{1}{2}$ " radius. KYDZSafe kickplates prevent pinching & lost objects. KYDZSafe 15" depth adds increased stability & 25% more storage than competitor's 12" depth. KYDZStrong materials are guaranteed to last. KYDZStrong dowel-pin construction adds stability & strength. KYDZStrong Recessed backs give stability & structural integrity. KYDZTuff acrylic finish is ultra-long lasting and resists yellowing. The UV coating is environmentally friendly and easy to clean with an extra-strong resistance to daily wear and common cleaning products, like bleach and nail polish remover.