



Jonti-Craft® Dual Computer Lab Table - 3344JC051

Item: 3344JC051



75" W x 24" D x 29" H
Ship Weight: 120 lbs
Warranty: 5 Years
Minimal Assembly
Made in United States

 **KYDZ Safe.**

 **KYDZ Strong.**

 **KYDZ Tuff.**

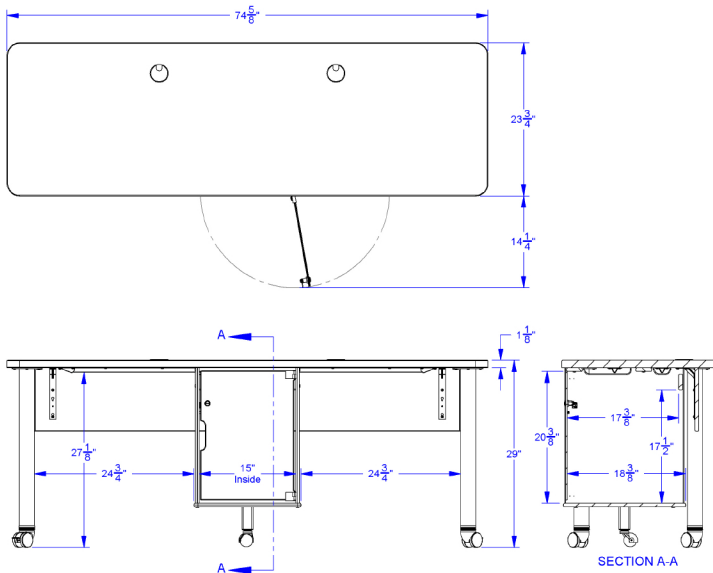
 **TRU Edge.**

The ideal combination of design, functionality, affordability, and quality for a computer lab table. These 24" deep tables provide ample work space for a keyboard, mouse, and flat panel monitor. The Dual Table features a central, lockable CPU station, which is large enough to securely store two, seven-inch wide computers and provides separation and privacy between busy students! The Single Table features an ADA compliant seating area and a side mounted CPU that can be mounted on either left or right side. The front Modesty Panel adds privacy. Integrated cord management. Heavy-duty, locking casters. KYDZSafe® edges. KYDZStrong® construction. KYDZTuff® finish. TRUEdge®. Heavy-duty, locking casters for mobility. GREENGUARD Gold certified. CARB II & CPSIA compliant.





Jonti-Craft® Dual Computer Lab Table - 3344JC051



Jonti-Craft Flagship Features Include:

KYDZSafe corners & edges are rounded to minimum of $\frac{1}{2}$ " radius. KYDZSafe kickplates prevent pinching & lost objects. KYDZSafe 15" depth adds increased stability & 25% more storage than competitor's 12" depth. KYDZStrong materials are guaranteed to last. KYDZStrong dowel-pin construction adds stability & strength. KYDZStrong Recessed backs give stability & structural integrity. KYDZTuff acrylic finish is ultra-long lasting and resists yellowing. The UV coating is environmentally friendly and easy to clean with an extra-strong resistance to daily wear and common cleaning products, like bleach and nail polish remover. TRUEdge is permanently thermo-fused to furniture, is moisture-resistant, and prevents germs from getting into the board. TRUEdge also comes in multiple colors.