



Jonti-Craft® Storage Module - 0405JC

Item: 0405JC



Organize large and small items on three shelves and in four drawers. Shelves are 25.5" wide x 13.5" deep x 7.5" high. KYDZSafe® edges. KYDZStrong® construction. KYDZTuff® finish. Back options available. Stationary.

36" W x 15" D x 29" H
Ship Weight: 75 lbs
Warranty: Lifetime
Fully Assembled
Made in United States

KYDZ Safe.

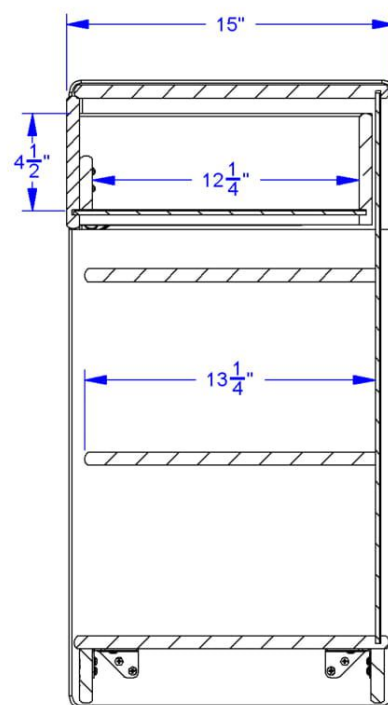
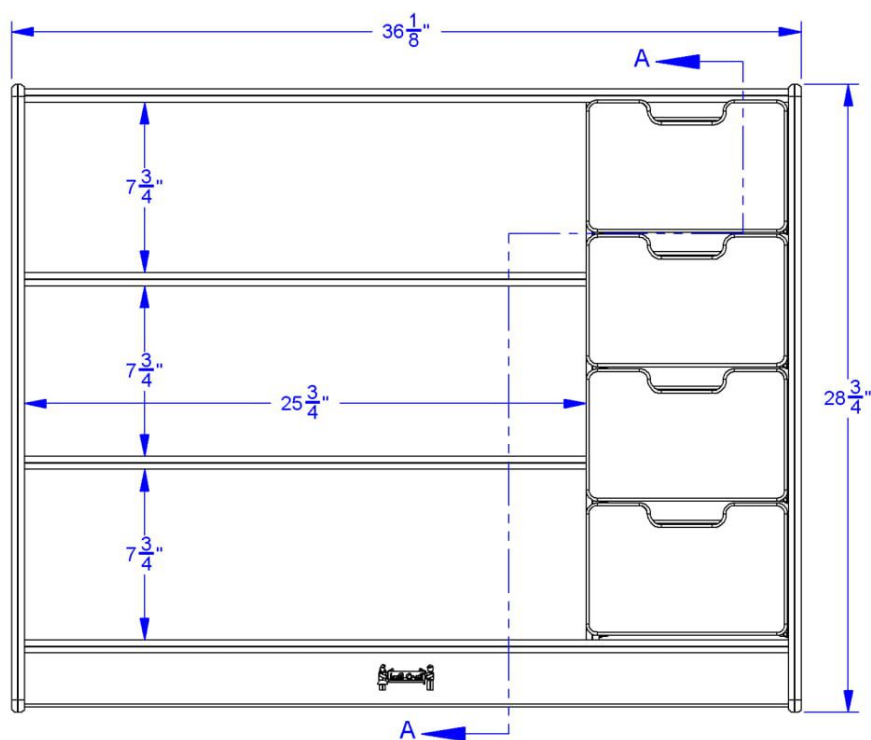
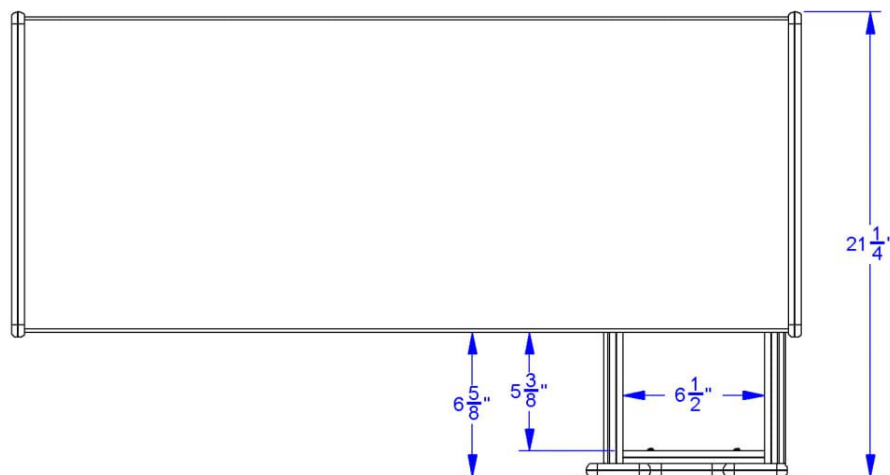
KYDZ Strong.

KYDZ Tuff.





JonTi-Craft® Storage Module - 0405JC



SECTION A-A

JonTi-Craft Flagship Features Include:

KYDZSafe corners & edges are rounded to minimum of 1/2" radius. KYDZSafe kickplates prevent pinching & lost objects. KYDZSafe 15" depth adds increased stability & 25% more storage than competitor's 12" depth. KYDZStrong materials are guaranteed to last. KYDZStrong dowel-pin construction adds stability & strength. KYDZStrong Recessed backs give stability & structural integrity. KYDZTuff acrylic finish is ultra-long lasting and resists yellowing. The UV coating is environmentally friendly and easy to clean with an extra-strong resistance to daily wear and common cleaning products, like bleach and nail polish remover.