

General Information

Project Name: _____

Consultant: _____

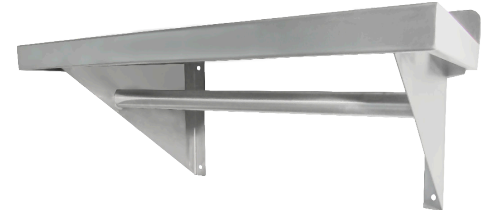
Item #: _____

Model #: _____

Quantity: _____



Model #WMS-1836-CR



Specifications

WMS-CR Model Wall Mounted Shelf is constructed of 18GA Type 304 stainless steel with Coat Rack, 1½" square down bend and ½" return at front and 2" up at rear. Shelves over 6' long will have an additional bracket approximately every 48".

Wall brackets are 16GA type 300 series stainless steel and include pre-drilled holes for easy installation. Wall shelves are provided with (2) brackets.

More brackets can be provided as needed.

The unit features 1¼" OD tubular bar welded under shelf to hang coats, jackets or other accessories.

Product Guide

IMC wall shelves are heavy duty and can hold many different items for great organization.

Many shapes and sizes are available such as "L" shaped.

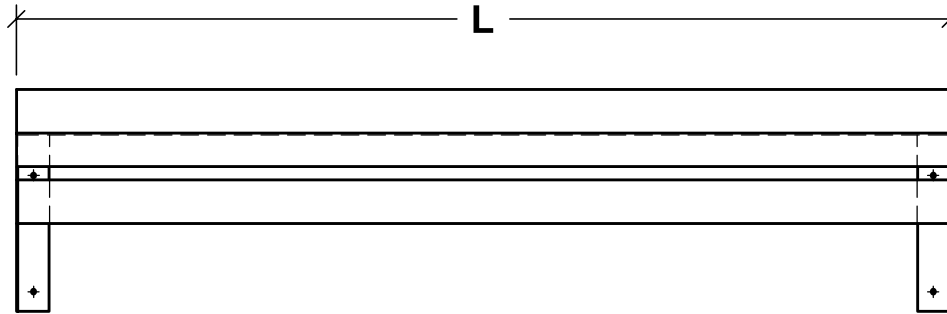
Options

- Rolled Edges
- 16GA S/S
- 14GA S/S
- Bracket to Keep Shelf 1" Off Floor
- Up Side Bends
- Rear Bend More Than 2"
- Side Bend More Than 2"

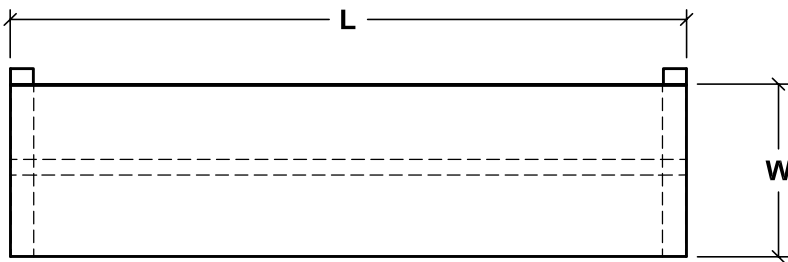
*See Price List for more options



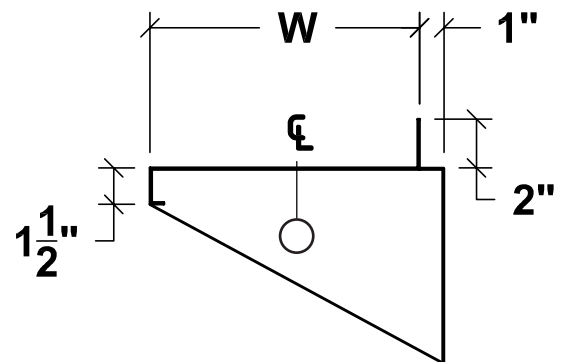
DRAWINGS



FRONT ELEVATION



PLAN



SIDE SECTION

WALL SHELVES W/ COAT RACK

Model	Size (W x L)	Model	Size (W x L)	Model	Size (W x L)
□ WMS-1424-CR	14" x 24"	□ WMS-1824-CR	18" x 24"	□ WMS-2424-CR	24" x 24"
□ WMS-1436-CR	14" x 36"	□ WMS-1836-CR	18" x 36"	□ WMS-2436-CR	24" x 36"
□ WMS-1448-CR	14" x 48"	□ WMS-1848-CR	18" x 48"	□ WMS-2448-CR	24" x 48"
□ WMS-1460-CR	14" x 60"	□ WMS-1860-CR	18" x 60"	□ WMS-2460-CR	24" x 60"
□ WMS-1472-CR	14" x 72"	□ WMS-1872-CR	18" x 72"	□ WMS-2472-CR	24" x 72"
□ WMS-1484-CR	14" x 84"	□ WMS-1884-CR	18" x 84"	□ WMS-2484-CR	24" x 84"
□ WMS-1496-CR	14" x 96"	□ WMS-1896-CR	18" x 96"	□ WMS-2496-CR	24" x 96"
□ WMS-14108-CR	14" x 108"	□ WMS-18108-CR	18" x 108"	□ WMS-24108-CR	24" x 108"
□ WMS-14120-CR	14" x 120"	□ WMS-18120-CR	18" x 120"	□ WMS-24120-CR	24" x 120"
□ WMS-14132-CR	14" x 132"	□ WMS-18132-CR	18" x 132"	□ WMS-24132-CR	24" x 132"
□ WMS-14144-CR	14" x 144"	□ WMS-18144-CR	18" x 144"	□ WMS-24144-CR	24" x 144"

Specifications subject to change without notice.

WMS-CR-20 0524