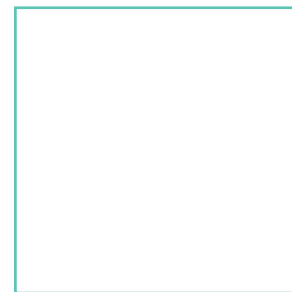




32" Square HPL Compact Top



Length: 32"
Width: 32"
Weight: -

Product Specifications

Product Description	Reference Number	Color	UPC Code 014306	Weight Each (lbs.)	Master Pack	Master Pack Volume (cu. ft)
32" Square HPL Compact Top	US32H038	Granite	930145	27.00	1	1.33
	US32H325	Vintage Pine	930169	27.00	1	1.33
	US32H727	Slate	930152	27.00	1	1.33
	US32H790	Kandia Gr. Marble	934488	27.00	1	1.33
	US32H722	Walnut	934525	27.00	1	1.33

Features & Benefits Warranty: 2 Yrs.

- Durable and impact resistant
- Water resistant – even when chipped!
- Easy to clean with soap and water – ideal for the foodservice environment
- Strong – the density of HPL is similar to the density of concrete

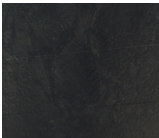
Grosfillex HPL Compact tabletops are perfect for fine dining, indoors or out! They provide the ultimate in strength and beauty along with their easy-to-clean finishes. They are available in attractive decors that feature a realistic “touch” effect. They are fitted with rails for easy installation on our bases, and pair beautifully with our X-One tilting table bases. Now introducing two new colors - Kandia Gray Marble and Walnut!



Granite



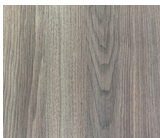
Vintage Pine



Slate



Kandia Gray
Marble



Walnut



No Spare Parts