



Project \_\_\_\_\_  
Item # \_\_\_\_\_  
Quantity \_\_\_\_\_

## Boxer™ Countertop Induction Ranges

Models: IRNG-BXC1-14, -18

Hatco's Boxer™ Induction Range has all the same power as our Hatco line of induction ranges, but with no frills. This economy model is simple to operate and has the Magnetic Power System (MPS), delivering the highest power in its class!

This unit has all the basics for the rigors of commercial foodservice use, as well as a timer with convenient power and temperature modes.

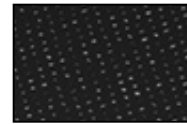
### Standard features:

- Heavy gauge stainless steel housing with side impact protection for the top
- Large control knob is adaptive and adjusts to user input. From precise, fine control (slow turns) to spanning the full range in a single twist (fast turns)
- Display instantly advises the operator of precise power (°F or °C) and time control (0 to 1 hour)
- Black, glass-ceramic top is durable and easy to clean – fully sealed top and conformal-coated boards add extra protection against grease or moisture
- Suitable for front of the house use with an ultra-quiet cooling fan
- Safety and convenience features, such as automatic shut-off, to prevent overheatings
- 71" (1800 mm) cord with plug

IRNG-BXC1-14



*Close up of patterned black glass-ceramic top – helps prevent noticeable scratches due to heavy use*



**For operation, location and safety information, please refer to the Installation & Operating Manual.**



ANSI/NSF 4



**HATCO CORPORATION**

(800) 558-0607 | (414) 671-6350

P.O. Box 340500 Milwaukee, WI 53234-0500 U.S.A.

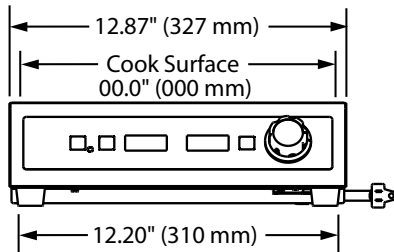
www.hatcocorp.com | support@hatcocorp.com



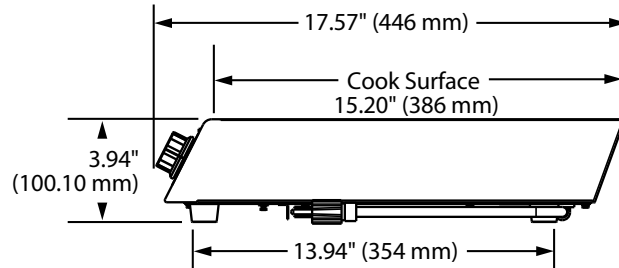
## Boxer™ Countertop Induction Ranges

Models: IRNG-BXC1-14, -18

### IRNG-BXC1 Model



FRONT VIEW



SIDE VIEW

### SPECIFICATIONS Countertop Induction Ranges

Model	Dimensions (Width x Depth x Height)	Volts	Phase	Watts	Amps	Plug	Cord Location	Ship Weight*
IRNG-BXC1-14	12.87" x 17.57" x 3.94" (327 x 446 x 100 mm)	120	Single	1440	12.0	NEMA 5-15P	Rear right bottom base corner	15 lbs. (7 kg)
IRNG-BXC1-18	12.87" x 17.57" x 3.94" (327 x 446 x 100 mm)	120	Single	1800	15.0	NEMA 5-15P <sup>§</sup>	Rear right bottom base corner	15 lbs. (7 kg)

\* Shipping weight includes packaging and is approximate.

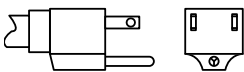
<sup>§</sup> Not available for Canada.

### PAN SIZE

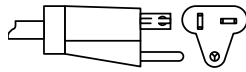
Maximum Pan Size: 11.8" diameter (300 mm), Minimum Pan Size: 4" diameter (102 mm)

### PLUG CONFIGURATIONS

#### NEMA 5-15P



#### NEMA 5-20P



### PRODUCT SPECS Boxer™ Induction Ranges

The Countertop Induction Range shall be a Boxer™ model, manufactured by the Hatco Corporation, Milwaukee, WI 53234 U.S.A.  
The Induction Range shall be rated at ... watts, ... volts, single phase and be ... inches (millimeters) in overall width. The Countertop Induction Range shall consist of a stainless steel housing with an aluminum base with a single generator coil and a

glass ceramic top surface. It includes a digital display for power or temperature and a separate digital display for the timer, an infinite control for power, temperature or timer control and a 71" (1800 mm) cord and plug.

Warranty consists of 24/7 parts and service assistance (US and Canada only).

**HATCO CORPORATION**

(800) 558-0607

(414) 671-6350

P.O. Box 340500 Milwaukee, WI 53234-0500 U.S.A.

www.hatcocorp.com

support@hatcocorp.com