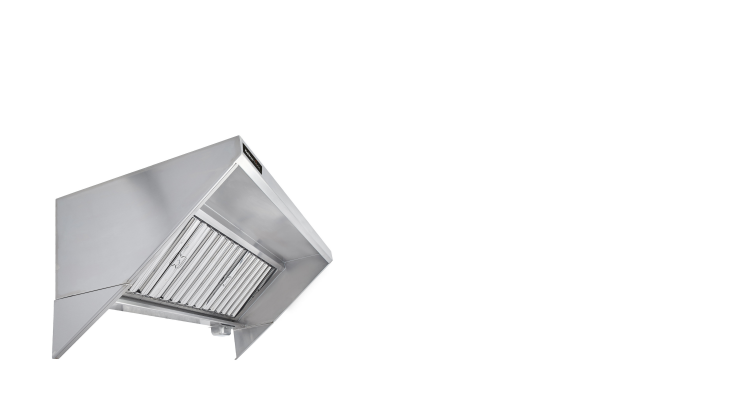


Halifax FTH0930 Type 1
Concession Trailer / Food Truck
Hood (Hood Only) - 9' x 30"

Item #421FTH0930

Technical Data	
Length	9 Feet
Depth	30 Inches
Height	18 Inches
Features	Made in America
Fire Suppression	Optional Fire Suppression
Plug Type	Hardwire
Style	Food Truck Hoods
Type	Type 1



Features

- Type 1 hood for grease-producing equipment; exhaust-only with no makeup air
- Includes sloped-front hood canopy only; exhaust fan sold separately
- 18-gauge 430 stainless steel construction on all exposed surfaces
- For food truck and concession trailer installations

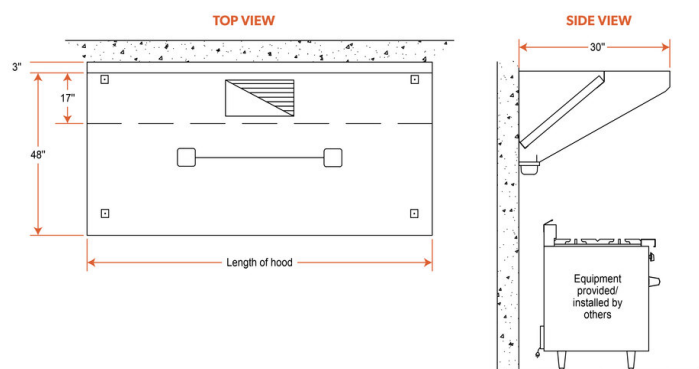
Certifications


Made in America


Hardwired


UL Certified

Plan View



Notes & Details

Keep your kitchen free of hazardous grease buildup with this Halifax FTH0930 9' x 30" type 1 concession trailer / food truck hood. This unit is suitable for use over any equipment that has a surface operating temperature under 700 degrees Fahrenheit, and that is required by fire code to have a type 1 hood when installed in a food truck or concession trailer - this includes fryers, griddles, charbroilers, conveyor pizza ovens, or any equipment that produces grease during the cooking process. The hood removes the grease-laden vapors produced by your equipment and prevents them from accumulating in places where they could become a fire or sanitation hazard, leaving your kitchen clean and safe to use! It is an exhaust-only design with no makeup or supply fan and contains the hood only, the exhaust fan is sold separately.

The hood uses (3) 20" x 20" and (3) 20" x 16" baffle-type filters, and the filters are made from stainless steel to provide durability and make cleaning easy. Grease extracted by the filter is collected in a grease trough, which drains into a stainless steel grease cup for disposal. 18-gauge 430 stainless steel is used on all exposed surfaces to give it excellent durability and cleanability, while the MIG-welded frame provides seamless, liquid-tight joints. The hood features a sloped-front canopy design that is great for low ceilings, providing extra front clearance and comfort for chefs, and dropping down close to the equipment in the back.

3 pre-wired lights (sent loose or installed) illuminate the equipment under your hood so that you can easily see what you're doing while cooking, and they require a 115V electrical connection to the junction box. The smooth top on this hood is great for tight installations because it allows maximum clearance. 4 hanger brackets can be included at your option to make installation easy. It must be hard-wired, cords and plugs are not included.

⚠ WARNING: This product can expose you to chemicals including lead, which are known to the State of California to cause cancer and birth defects or other reproductive harm. For more information, go to www.p65warnings.ca.gov.