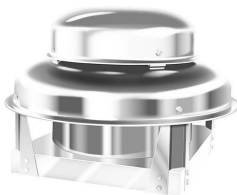


# Halifax CHO548 Package Type 2 Condensate Hood System - 5' x 48"

Item #421CHP548

## Technical Data

Length	5 Feet
Depth	48 Inches
Ceiling Height	10' or Over
Amps	6 Amps
Phase	1 Phase
Voltage	115 Volts
Wattage	690 Watts
Features	Made in America
Fire Suppression	Without Fire Suppression
Horsepower	1/4 hp



## Features

- 18-gauge 304 stainless steel consntruction on all exposed surfaces
- Full perimeter gutter with 1/2" drain
- Wire mesh filters included
- 115V direct-drive downblast exhaust fan (1000 CFM)

## Certifications



Made in America



Hardwired

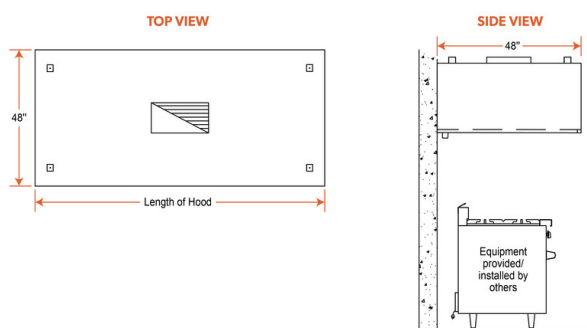


UL Classified EPH

## Technical Data

Plug Type	Hardwire
Stainless Steel Type	Type 304
Style	Condensate Hood Systems
Type	Type 2

## Plan View



## Notes & Details

Keep your kitchen free of condensate and steam with this Halifax CHO548 package 5' x 48" type 2 condensate hood system. This unit is suitable for use over any equipment that has a surface operating temperature under 600 degrees Fahrenheit, and that is required by fire code to have a type 2 hood - this includes equipment such as high-temperature dishwashers, ovens, and pasta cookers. It is not designed for use over grease-producing equipment. The hood removes the steam and heat produced by your equipment and makes your kitchen a much more comfortable place for employees to work! It is an exhaust-only system and also contains a 115V direct-drive downblast exhaust fan designed for 1000 CFM, with your choice of a flat roof or pitched roof curb mount. A variable dial control makes it easy to adjust the fan speed as needed to account for higher or lower ventilation needs.

The hood uses (1) 12" x 12" wire mesh filter. 18-gauge 304 stainless steel is used on all exposed surfaces to give it excellent durability and cleanability, while the MIG-welded frame provides seamless, liquid-tight joints. The hood features a box-style canopy design to provide superior performance.

This hood should be used in applications where the ceiling is 10' or taller. 4 hanger brackets are included to make installation easy. It must be hard-wired, cords and plugs are not included.

**⚠ WARNING:** This product can expose you to chemicals including lead, which are known to the State of California to cause cancer and birth defects or other reproductive harm. For more information, go to [www.p65warnings.ca.gov](http://www.p65warnings.ca.gov).