



Master Series Heavy Duty Combination Top Range

Item: _____
Quantity: _____
Project: _____
Approval: _____
Date: _____

Models:

☐ MST42R ☐ MST42S ☐ MST42T ☐ MST42R-E ☐ MST42S-E ☐ MST42T-E

Range with 17" Valve
Control Griddle and Two
Open Burners



Model MST42R-E

Standard Features:

- Stainless steel front and sides.
- 6" (152mm) chrome steel adj. legs
- 7-1/2" (191mm) stainless steel front rail
- Two(2), 2-piece Starfire open burners w/removable heads rated 30,000 BTU (8.78kW) CE approved or 35,000 BTU (10.25kW) CSA approved models, (natural or propane gas)
- Removable ring grates over each burner & cast iron top grates
- Stainless steel drip tray under open burners
- Griddle with 1" (25mm) thick steel plate on left, with 30,000 BTU (8.78kW) "H" type burner controlled by Hi-Lo valve
- 2-5/16" (59mm) high welded steel splash guards, sides & back for griddle
- Clip-on stainless steel backsplash for griddle plate
- Removable front-mounted stainless steel grease receptacle
- Fully porcelainized oven interior
- Piezo Spark ignition for oven
- 40,000 BTU (11.72 kW) natural gas, 35,000 BTU (10.25 kW) propane gas cast iron oven burner
- Electric Spark ignition on all pilots Suffix -E models
- Sentry total flame failure protection for all burners

Optional Features:

- ☐ Stainless steel main back
- ☐ Stainless steel common front rail up to 68" (1728mm) wide (2 or more units in a battery)
- ☐ Fully grooved griddle (or grooved sections)
- ☐ Stainless steel oven interior
- ☐ Convection oven base, add C to model #, e.g. MST42RC
- ☐ Additional oven rack
- ☐ Rear gas connection, 3/4", 1", or 1-1/4" NPT
- ☐ Gas regulator 3/4" or 1-1/4"
- ☐ Gas shut off valve; 3/4", 1" or 1-1/4" NPT
- ☐ Gas flex hose & quick disconnect (3/4", 1" or 1-1/4" NPT x 5') w/restraining device, please specify
- ☐ End caps and cover (NC, Specify)
- ☐ 4 swivel casters with front brakes
- ☐ Polyurethane non-marking swivel casters w/ front brakes
- ☐ 6" (152mm) stainless steel adj. legs
- ☐ Dais base (not for use with "RC" oven)
- ☐ Stainless steel tubular high shelf, single or double deck
- ☐ Stainless steel backguard: 10" (354mm), 17" (432mm) or 33" (838mm)
- ☐ 230 volt, 50 cycle components, RC motor and/or electric ignition (export)
- ☐ Celsius dial for oven thermostat (NC)

Specifications:

Heavy-duty combination top gas range with oven, One 17" (432mm) W x 25" (635mm) D, 1" (25mm) thick, Hi-Lo valve griddle on left, 30,000 BTU (8.78kW), bordered side and rear by continuously welded stainless steel splash guard. Two 30,000 BTU (8.78kW) Starfire open burners with removable heads. Sentry total flame failure protection for all burners. Heavy duty cast iron top grates/ring grates on right only, 34" (864mm) W x 38" (965mm) D, including 7-1/2" (191mm) deep stainless steel front rail. Porcelain enamel oven interior with 40,000 BTU (11.72kW) cast iron burner. Stainless steel front and sides. Natural or propane gas available. Also available with storage base w/ doors, suffix S, and modular top, suffix T.



NOTE: Ranges supplied with casters must be installed with an approved restraining device.

Master Series Heavy Duty Combination Top Range

Garland Commercial Ranges Ltd.
1177 Kamato Road,
Mississauga, Ontario
L4W 1X4 CANADA

General Inquires 1-905-624-0260
USA Sales, Parts and Service 1-800-424-2411
Canadian Sales 1-888-442-7526
Canada or USA Parts/Service 1-800-427-6668



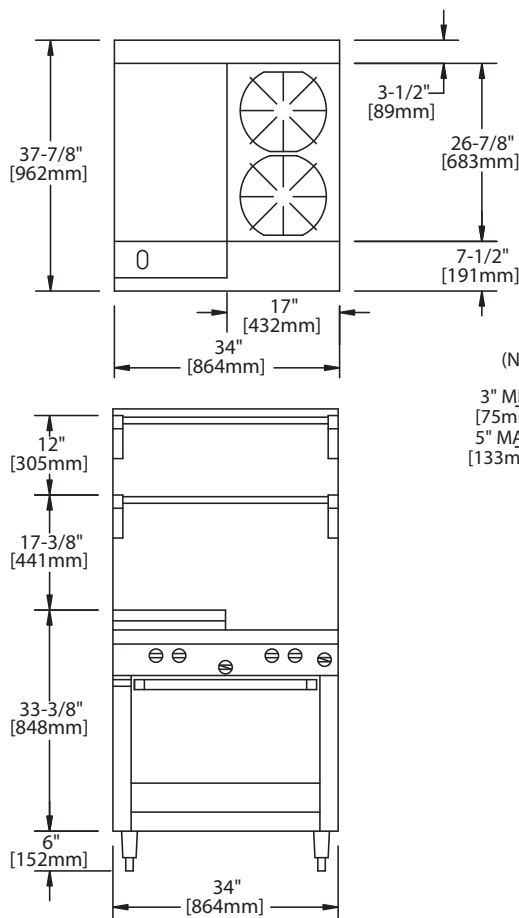
Product	Width: In(mm)	Depth: In(mm)	Height: In(mm) (w/ NSF Legs)	Height: In(mm) (w/o NSF Legs)	Oven/Storage Base Interior: in(mm)		
					Width	Depth	Height
MST42R	34(864)	38(965)	36-3/8(924)	30-3/8(772)	26-1/4(667)	29(737)**	13-1/2(343)
MST42S	34(864)	38(965)	36-3/8(924)	30-3/8(772)	26(665)	30-1/2(773)	20-1/2(519)
MST42T	34(864)	38(965)	36-3/8(924) w/stand	9-1/2(241) w/o stand*	N/A	N/A	N/A

*Modular top has 1-1/2" seating flanges. **RC oven is 25" (635mm) deep.

INPUT-BTU/hr	MST42R(C)		MST42S & MST42T	
	Natural	Propane	Natural	Propane
Griddle Top	30,000 (8.78kW)	30,000 (8.78kW)	30,000 (8.78kW)	30,000 (8.78kW)
Open Top: CE Approved Models	60,000 (17.57kW)	60,000 (17.57kW)	60,000 (17.57kW)	60,000 (17.57kW)
Open Top: CSA Approved Models	70,000 (20.50kW)	70,000 (20.50kW)	70,000 (20.50kW)	70,000 (20.50kW)
Oven: CE and CSA Approved Models	40,000 (11.71kW)	35,000 (10.25kW)	N/A	N/A

RC=Range w/Convection Oven R=Range w/Oven S=Range w/Storage Base T=Modular Top

INSTALLATION NOTES			Shipping Wt: (Lb/Kg) ²
Combustible Wall Clearances ¹	Entry Clearances	Operating Pressure	
Sides: 11" (279mm) Back: 6" (152mm)	Crated: 39-1/4"(997mm) Uncrated: 34-1/4" (870mm)	Natural: 6" WC (15mbar) Propane: 10" WC (25mbar)	MST42R 520/326 MST42S 420/191 MST42T 330/150



¹NOTE: Installation clearance reductions are applicable only where local codes permit.

²Shipping Cubic Feet 50 for R & S Models, 20 for T models

Gas input ratings shown here are for installations up to 2,000 ft.

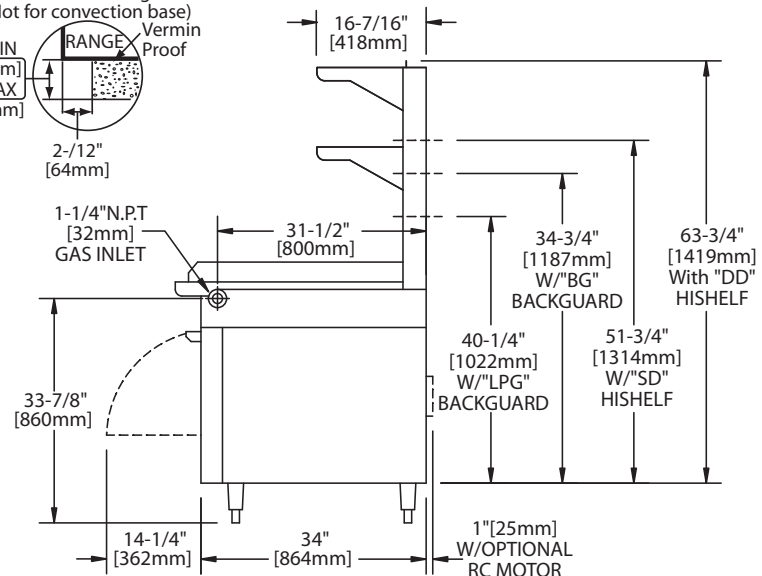
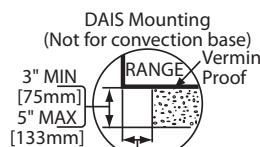
(610m) above sea level. Specify altitudes over 2,000 ft.

Electrical characteristics each RC oven: 1/3 HP motor, 120 VAC, single

phase, 3.4 amps, 6 ft. (1.8m) power cord with NEMA 5-15P plug provided.

230 VAC export is direct connect, single phase, 50 Hz.

Please specify gas type when ordering.



Form# MST42 (08/03/11)