



STAINLESS STEEL 14 GAUGE NSF SERVICE SINKS



NSF APPROVED

Item #:	Qty #:
Model #:	
Project #:	

Manual Operated
(Faucet Not
Included)



FS-WM-2219 Shown



Knee Valve



FS-WM-2219EF Shown



FS-WM-2219KV Shown



FS-WM-2219FV Shown



Toe-Push Valve

FEATURES:

- 8 1/2" High Backsplash.
- 10" (2219 Series) or 12" (2721 Series) Sink Bowl Depth.
- Stainless Steel "Z" Brackets (2) Supplied Each Unit.
- 3 1/2" Rear Drain Basket Drain(s).
- Support Bracket Units Includes Tubular Stainless Steel Supports That Allow Full Clearance Underneath.

Additional Features:

- Manual Operated Units:** Faucet not included. 8" O.C. holes provided.
- Electronic Faucet Units (EF):** Plug/Battery Operated Electronic Faucet(s).
- Knee Valve Operated Units (KV):** Knee Operated Valve(s).
- Toe-Push Operated Units (FV):** Toe-Push Operated Valves(s).

Construction:

- All Tig Welded.
- Welded Areas Blended To Match Adjacent Surfaces And To A Satin Finish.
- Die Formed Tubular Wall Brackets.

Material:

- All 14 Gauge Type "304" Stainless Steel.
- 1 5/8" Tubular "304" Stainless Steel Wall Brackets Or
- 1 5/8" Tubular "304" Stainless Steel Legs With Bullet Feet.

Mechanical:

- Faucet Holes 8" On Centers For Manual Operated Units.
- Single Faucet Hole(S) For Electronic Operated Units.

MANUAL FAUCET OPERATED	ELECTRONIC OPERATED	KNEE VALVE OPERATED	TOE-PUSH OPERATED				
Model #	Model #	Model #	Model #	L	W	Wt.	Cu. Ft.
FS-WM-2219†	FS-WM-2219EF	FS-WM-2219KV*	FS-WM-2219FV**	23"	23"	62 lbs.	10
FS-WM-2721†	FS-WM-2721EF	FS-WM-2721KV*	FS-WM-2721FV**	27"	21-1/2"	77 lbs.	13

†Add K-472 For Faucet Hole Revision

*Knee Valve Unit Has 8" Bowl Depth

**Toe-Push Operated Sinks Include Wall Bracket & Are Floor Mounted



Customer Service Available To Assist You 1-800-645-3166 8:30 am - 8:00 pm E.S.T.

For Orders & Customer Service:

Email: customer@advancetabco.com or Fax: 631-242-6900

For Smart Fabrication™ Quotes:

Email: smartfab@advancetabco.com or Fax: 631-586-2933

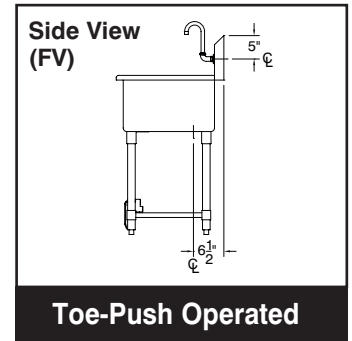
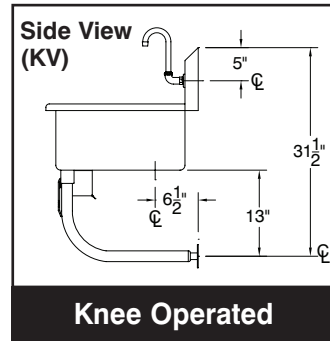
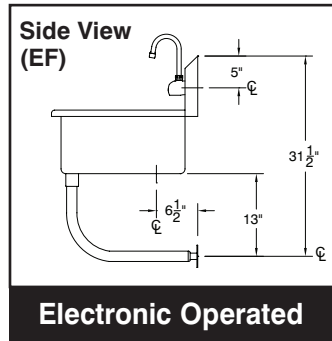
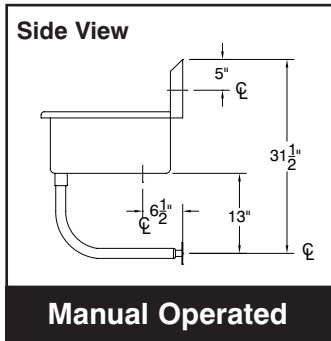
REF-B

23" SINGLE STATION SERVICE SINKS

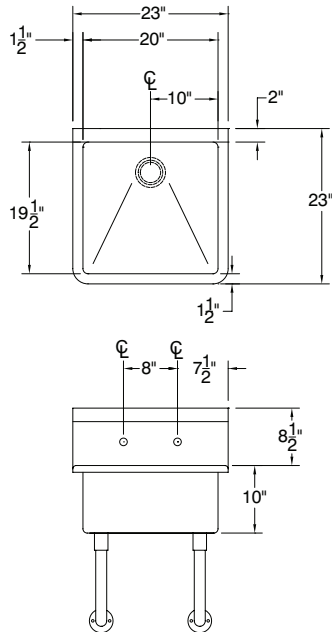
TOL ± .500"

FITTINGS SUPPLIED AS SHOWN

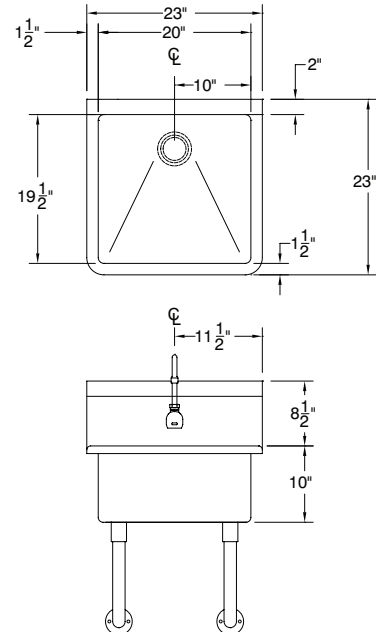
ALL DIMENSIONS ARE TYPICAL



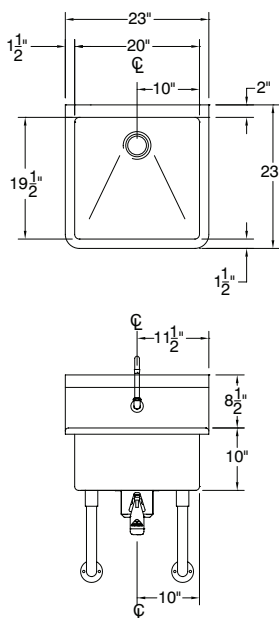
FS-WM-2219 Manual Operated



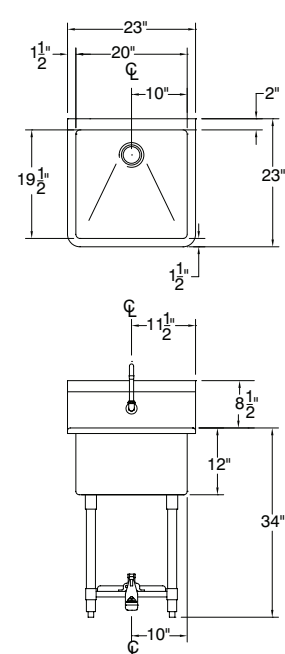
FS-WM-2219EF Electronic Operated



FS-WM-2219KV Knee Operated



FS-WM-2219FV Toe-Push Operated



ADVANCE TABCO is constantly engaged in a program of improving our products. Therefore, we reserve the right to change specifications without prior notice.

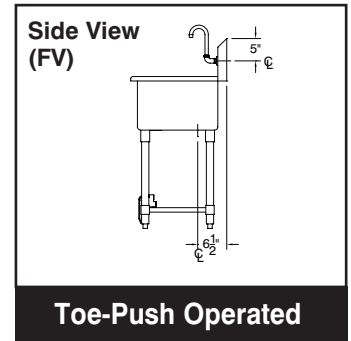
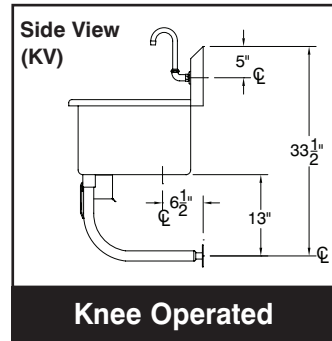
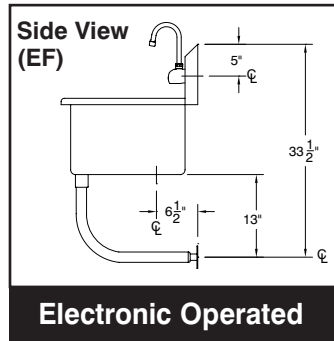
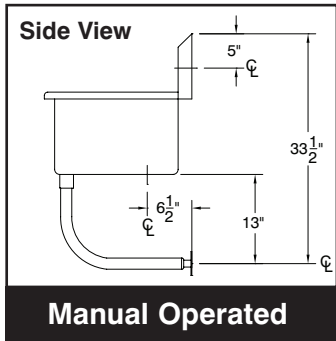
© ADVANCE TABCO, JANUARY 2018

27" SINGLE STATION SERVICE SINKS

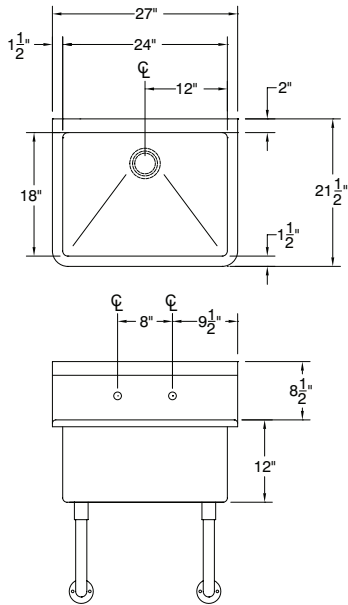
TOL ± .500"

FITTINGS SUPPLIED AS SHOWN

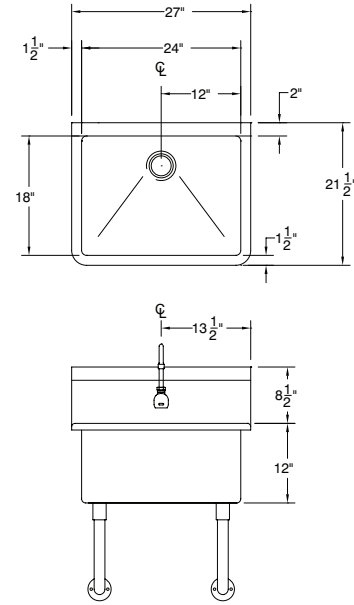
ALL DIMENSIONS ARE TYPICAL



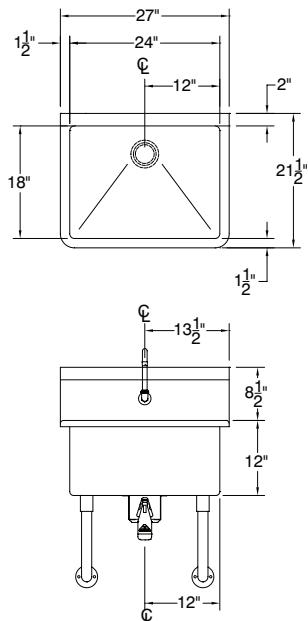
FS-WM-2721 Manual Operated



FS-WM-2721EF Electronic Operated



FS-WM-2721KV Knee Operated



FS-WM-2721FV Toe-Push Operated

