



STAINLESS STEEL

14 GAUGE MULTI-STATION HAND SINKS W/ TUBULAR SUPPORTS or LEGS



NSF APPROVED



FS-WM-40EF Shown



Electronic Faucet

Manual Operated
(Faucet Not Included)



FS-WM-40 Shown



Knee Valve



FS-WM-40KV Shown



FS-WM-40FV Shown



Toe-Push

Item #: _____ Qty #: _____
Model #: _____
Project #: _____

FEATURES:

8 1/2" high backsplash.

8" sink bowl depth.

Stainless steel "Z" brackets (2) supplied each unit.

3 1/2" rear basket drain(s)

Support Bracket Units includes tubular stainless steel supports that allow full clearance underneath.

Toe-Push Units includes tubular stainless steel legs with adjustable stainless steel bullet feet.

Additional Features:

Manual Operated Units: Faucet not included. 8" O.C. holes provided.

Electronic Faucet Units (EF): Plug/Battery Operated Electronic Faucet(s).

Knee Valve Operated Units (KV): Knee Operated Valve(s).

Toe-Push Operated Units (FV): Toe-Push Operated Valve(s).

CONSTRUCTION:

All TIG welded.

Welded areas blended to match adjacent surfaces and to a satin finish.

Die formed tubular wall brackets.

MATERIAL:

All 14 gauge type "304" stainless steel.

1 5/8" tubular "304" stainless steel wall brackets OR

1 5/8" tubular "304" stainless steel legs with bullet feet.

Stainless steel gussets.

MECHANICAL:

Supply is 1/2" hot and cold for knee and foot valve units.

Faucet holes 8" on centers for manual operated units.

MANUAL FAUCET OPERATED		ELECTRONIC OPERATED	KNEE OPERATED	TOE-PUSH OPERATED			
Length	Model #	Model #	Model #	Model #	# of Faucets	Wt.	Cu. Ft.
40"	FS-WM-40	FS-WM-40EF	FS-WM-40KV	FS-WM-40FV	2	72 lbs.	15
60"	FS-WM-60	FS-WM-60EF	FS-WM-60KV	FS-WM-60FV	3	84 lbs.	18
80"	FS-WM-80	FS-WM-80EF	FS-WM-80KV	FS-WM-80FV	4	120 lbs.	22
100"	FS-WM-100	FS-WM-100EF	FS-WM-100KV	FS-WM-100FV	5	156 lbs.	30
120"	FS-WM-120	FS-WM-120EF	FS-WM-120KV	FS-WM-120FV	6	198 lbs.	36

NOTE: 100" Units and larger provided with 2 Drains. Toe-Push Operated Sinks Include Wall Bracket & are Floor Mounted

Floor Standing Legs Option

Model #	Fits Sink Length
FS-CB-40	40"
FS-CB-60	60"
FS-CB-80	80"
FS-CB-100	100"
FS-CB-120	120"

Converts Wall Mounted FS-WM Sinks To Free Standing Floor Units (Excludes FV Series).



MODEL	Optional Accessories	QTY
K-13	S/S Soap Dispenser	___
K-13WMS	Factory Install Bracket to Backsplash for K-13 Soap Dispenser (Includes K-13 Soap Dispenser)	___
K-472	Faucet Hole Revision (To Modify Hole Punch Other Than 8" O.C. - Per Hole)	___
K-175	Electronic Splash Mount Faucet	___
K-121	Single Hole Splash Mount 3 1/2" Gooseneck Spout	___
K-11	8" O.C. 14" Splash Mount Swing Spout Faucet	___
K-112	8" O.C. 12" Splash Mount Swing Spout Faucet	___

Standard Faucet conforms to NSF 61 Standard 9 and compliance to AB 1953 Standards.



Customer Service Available To Assist You **1-800-645-3166** 8:30 am - 8:00 pm E.S.T.

For Orders & Customer Service:

Email: customer@advancetabco.com or Fax: 631-242-6900

For Smart Fabrication™ Quotes:

Email: smartfab@advancetabco.com or Fax: 631-586-2933

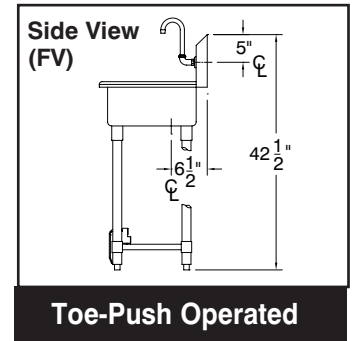
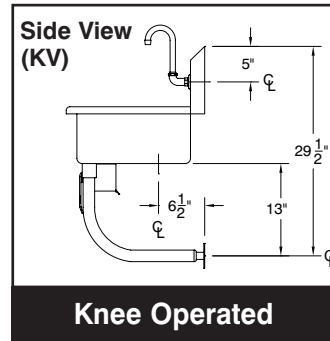
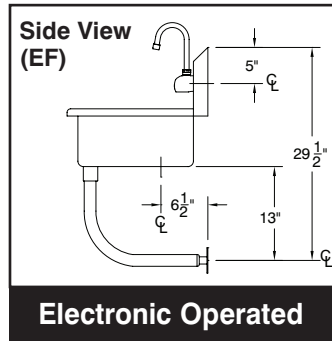
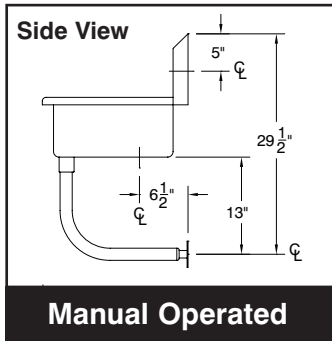
REF-JJ

40" TWO STATION SINKS

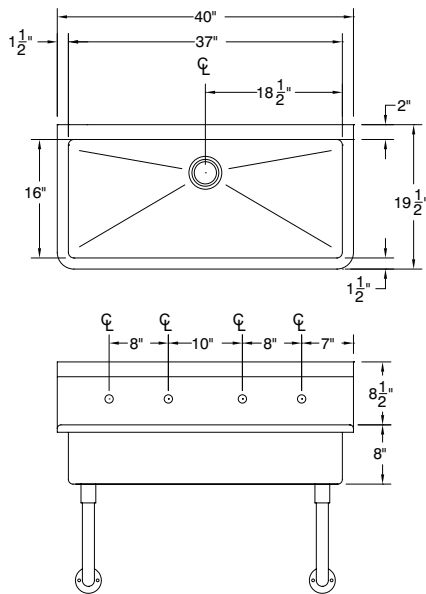
TOL ± .500"

FITTINGS SUPPLIED AS SHOWN

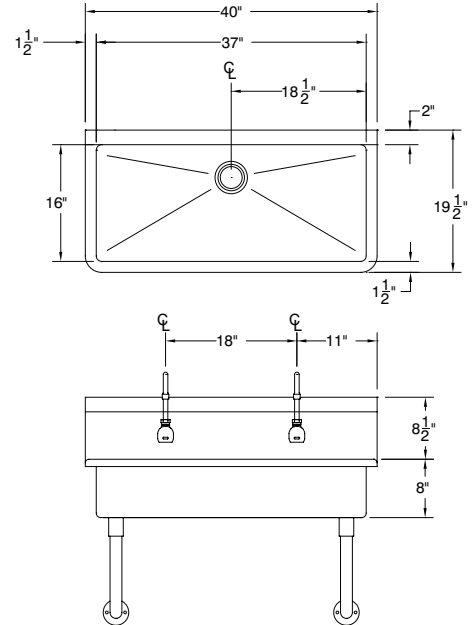
ALL DIMENSIONS ARE TYPICAL



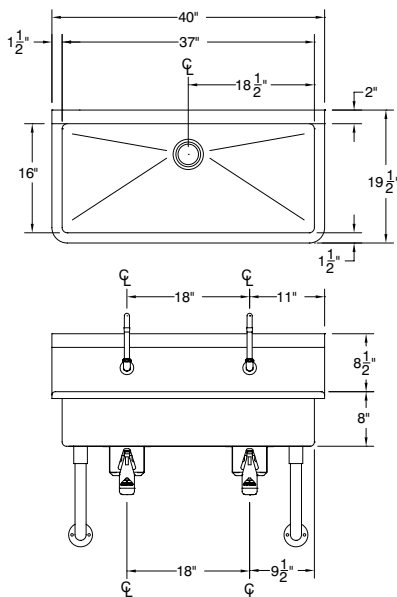
FS-WM-40 Manual Operated



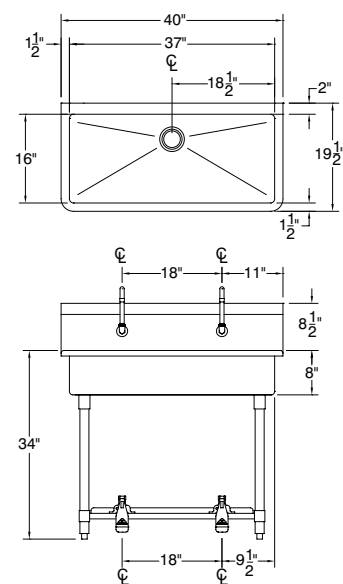
FS-WM-40EF Electronic Operated



FS-WM-40KV Knee Operated



FS-WM-40FV Toe-Push Operated

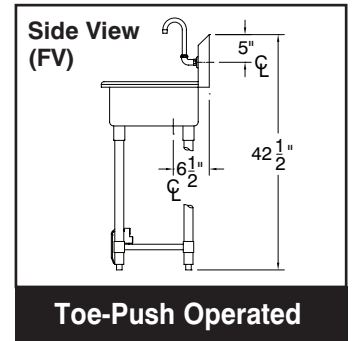
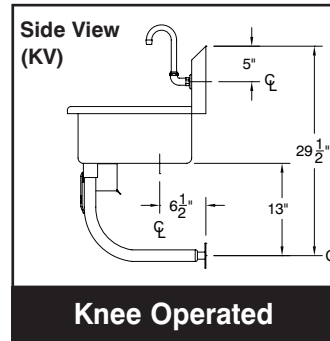
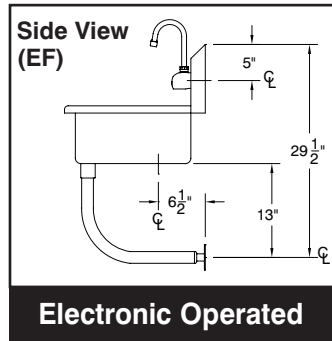
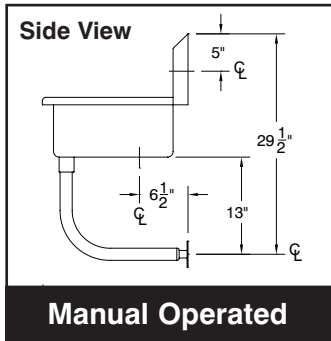


60" THREE STATION SINKS

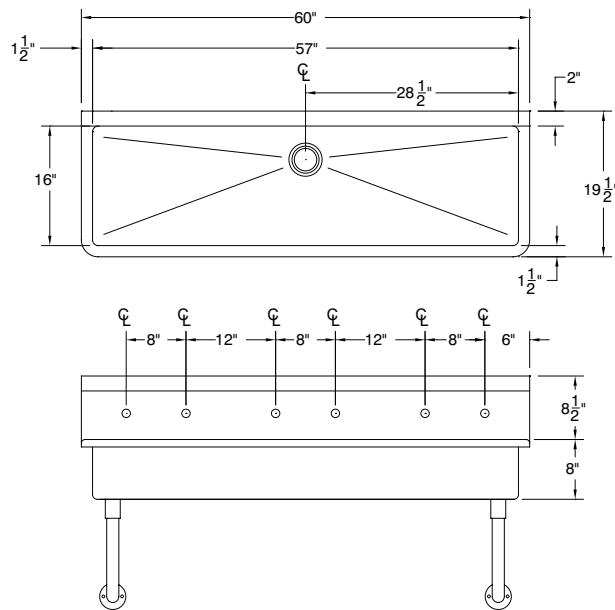
TOL ± .500"

FITTINGS SUPPLIED AS SHOWN

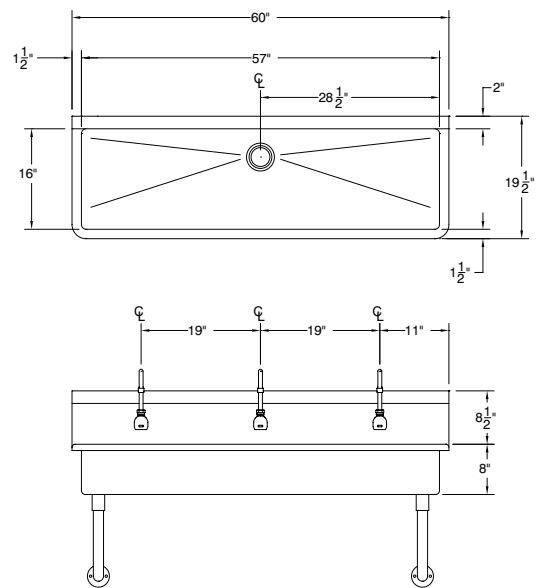
ALL DIMENSIONS ARE TYPICAL



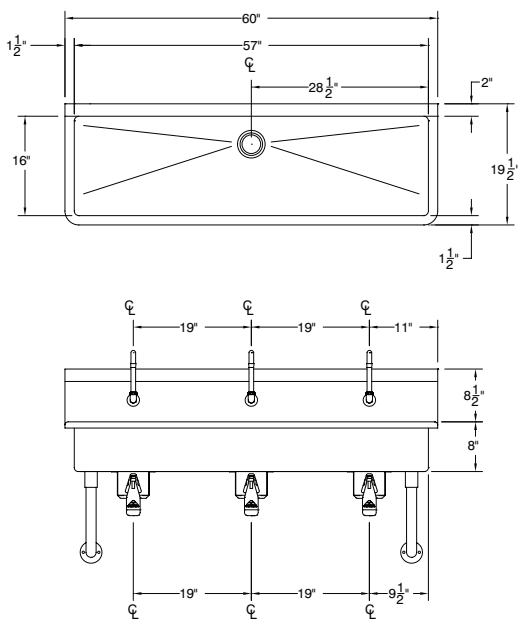
FS-WM-60 Manual Operated



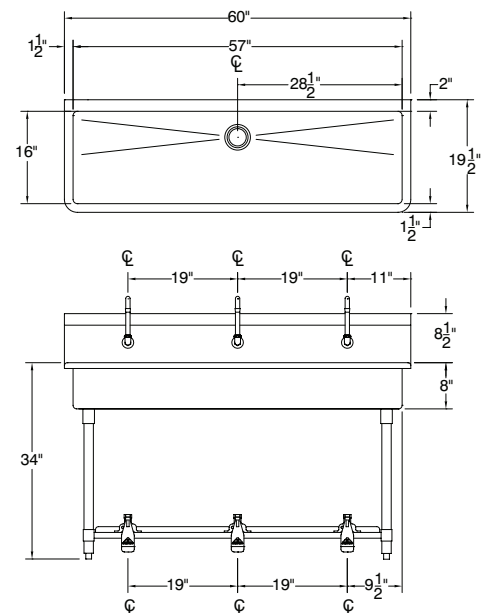
FS-WM-60EF Electronic Operated



FS-WM-60KV Knee Operated



FS-WM-60FV Toe-Push Operated

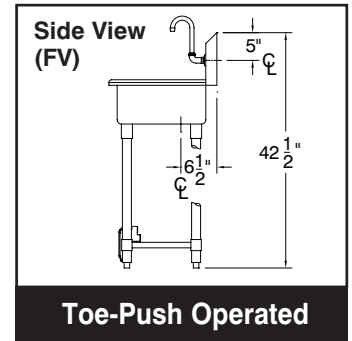
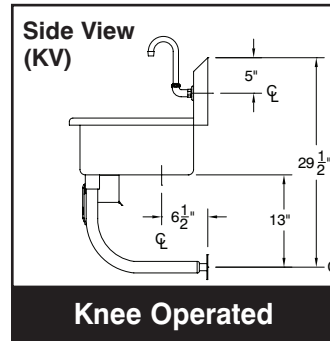
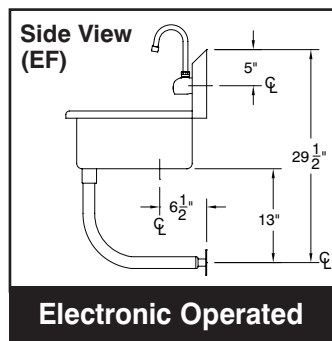
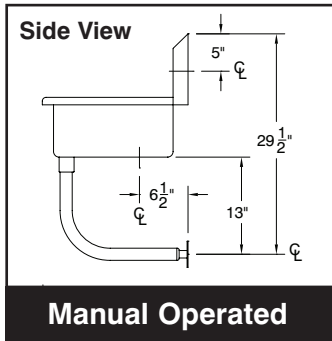


80" FOUR STATION SINKS

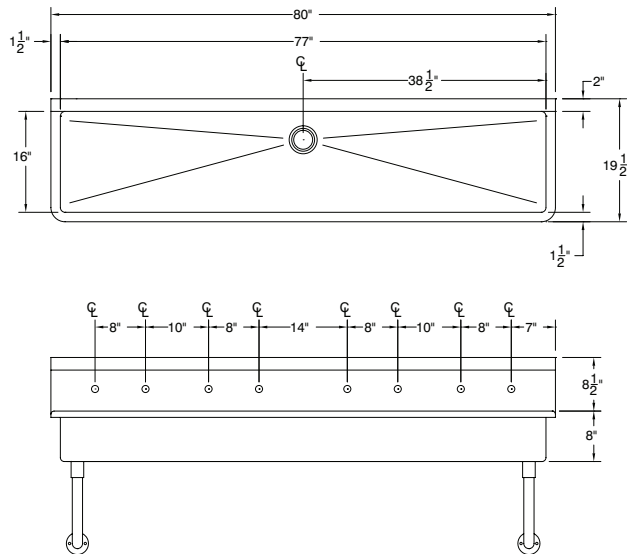
TOL $\pm .500"$

FITTINGS SUPPLIED AS SHOWN

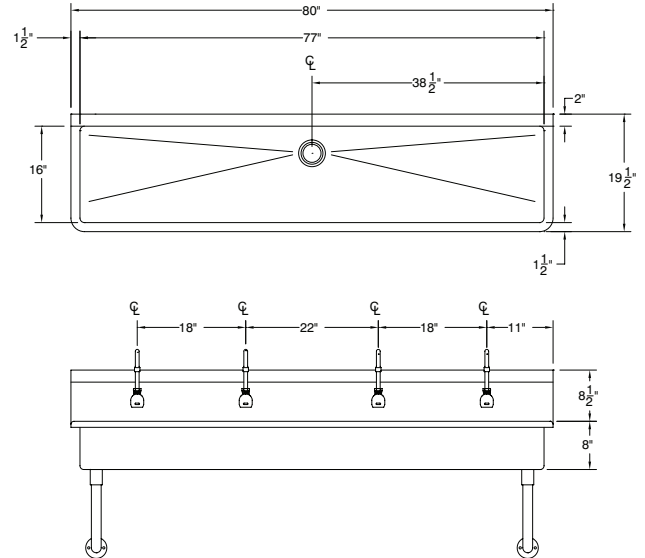
ALL DIMENSIONS ARE TYPICAL



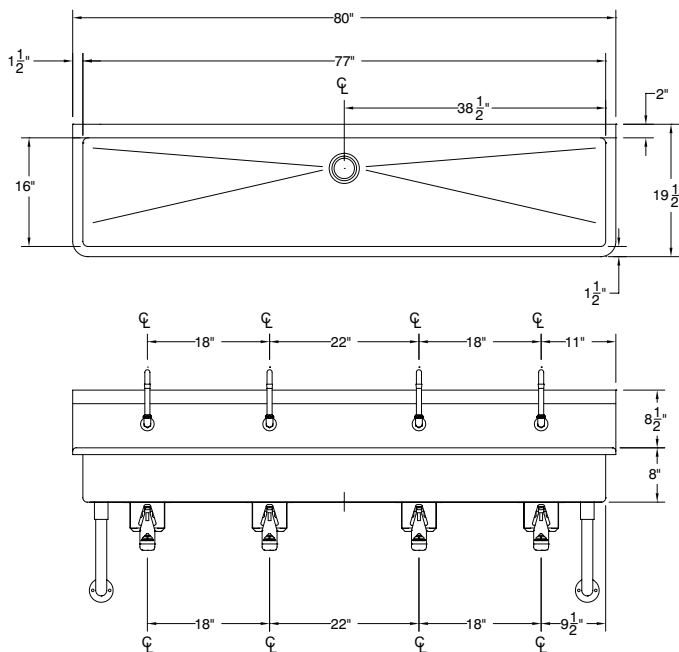
FS-WM-80 Manual Operated



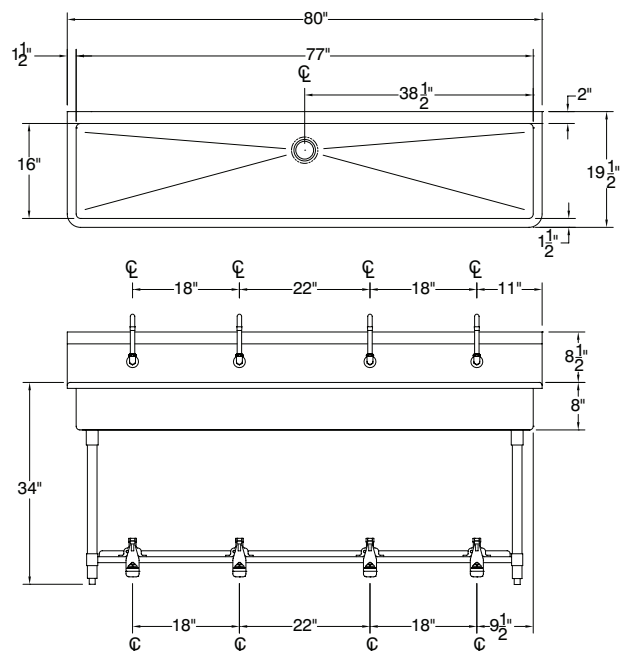
FS-WM-80EF Electronic Operated



FS-WM-80KV Knee Operated



FS-WM-80FV Toe-Push Operated

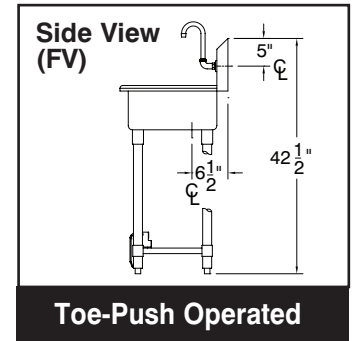
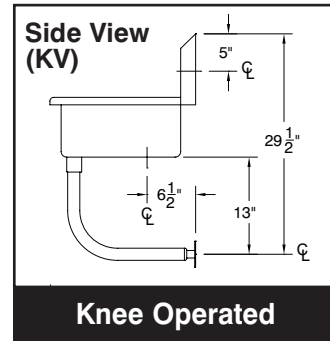
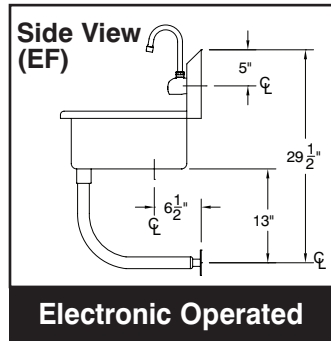
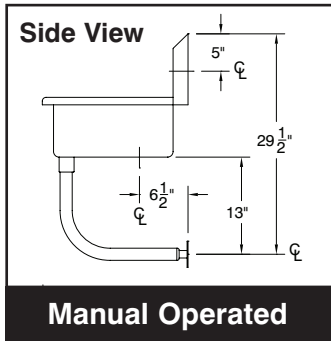


100" FIVE STATION SINKS

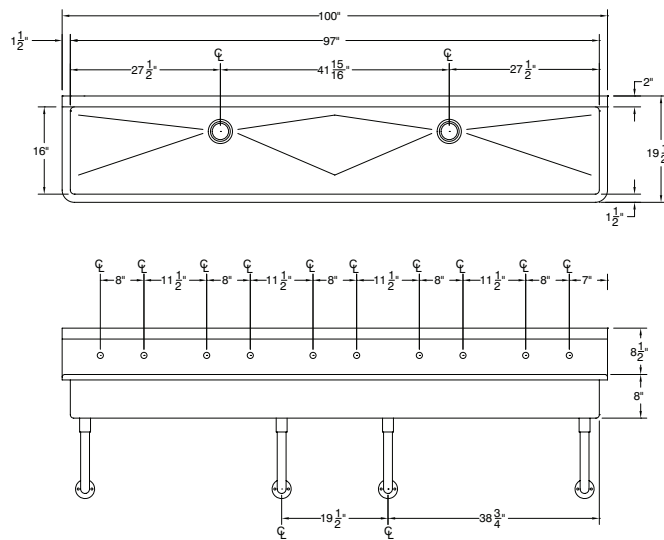
TOL ± .500"

FITTINGS SUPPLIED AS SHOWN

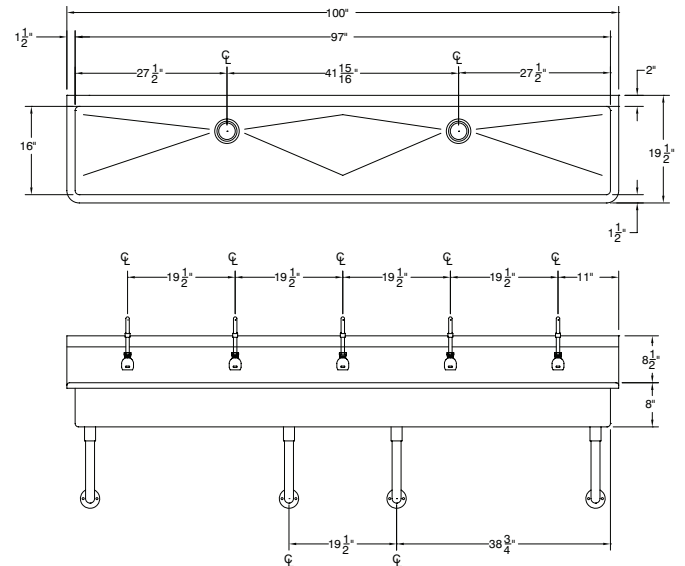
ALL DIMENSIONS ARE TYPICAL



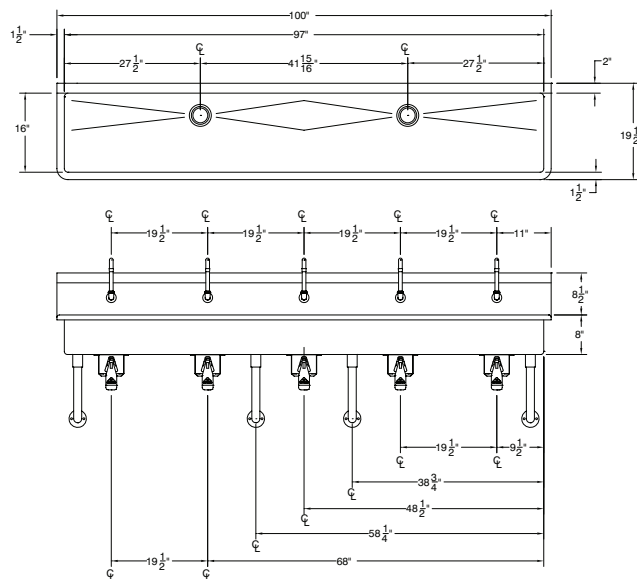
FS-WM-100 Manual Operated



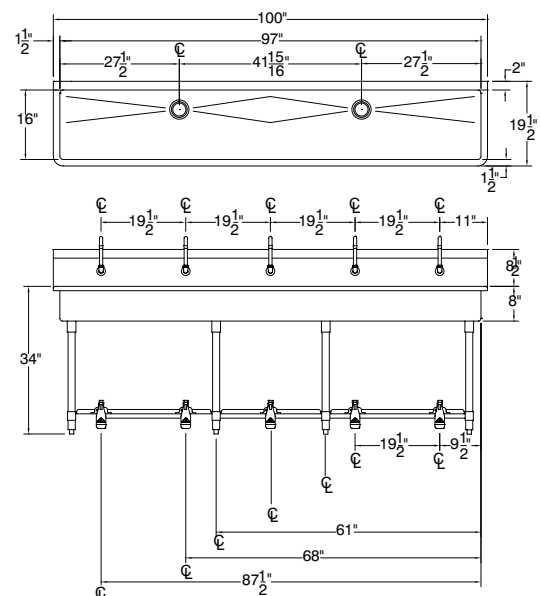
FS-WM-100EF Electronic Operated



FS-WM-100KV Knee Operated



FS-WM-100FV Toe-Push Operated

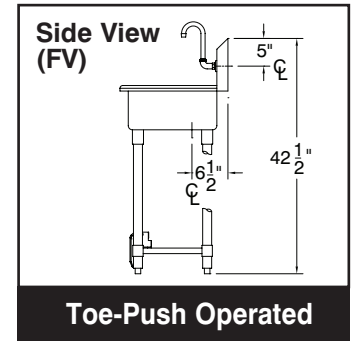
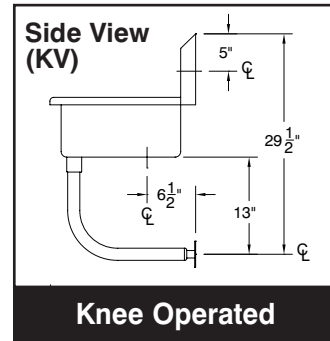
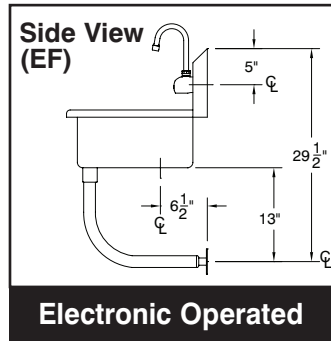
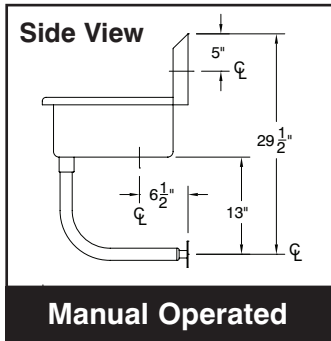


120" SIX STATION SINKS

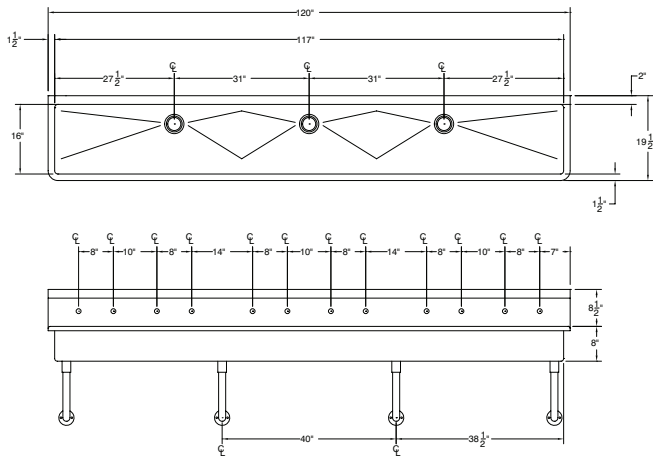
TOL ± .500"

FITTINGS SUPPLIED AS SHOWN

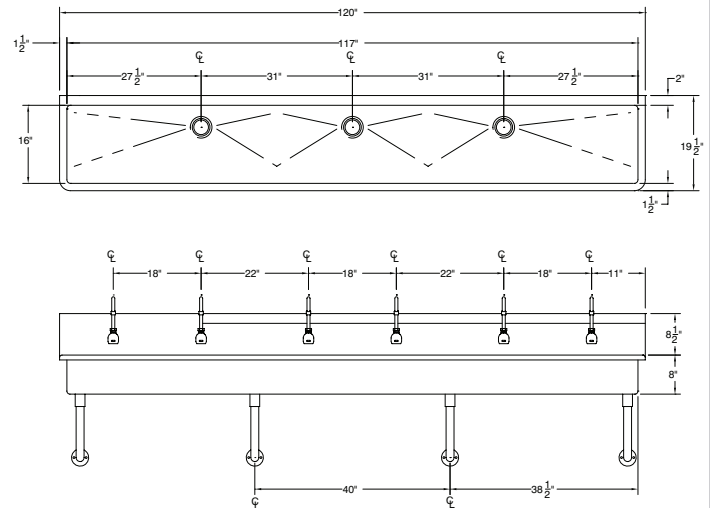
ALL DIMENSIONS ARE TYPICAL



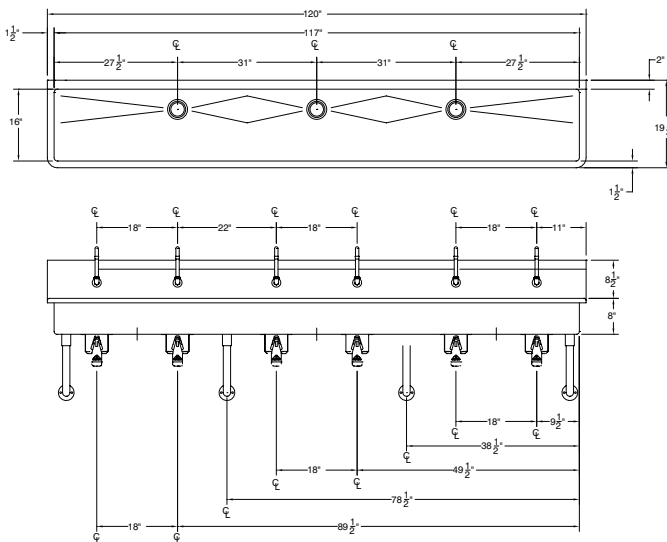
FS-WM-120 Manual Operated



FS-WM-120EF Electronic Operated



FS-WM-120KV Knee Operated



FS-WM-120FV Toe-Push Operated

