

CHOCOVISION

14 Catharine St., Poughkeepsie, NY 12601
Phone: (800) 324-6252 • Fax: (845) 473-8004
www.chocovision.com

Project Name: _____

Model #: _____

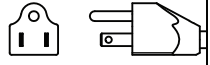
Quantity: _____

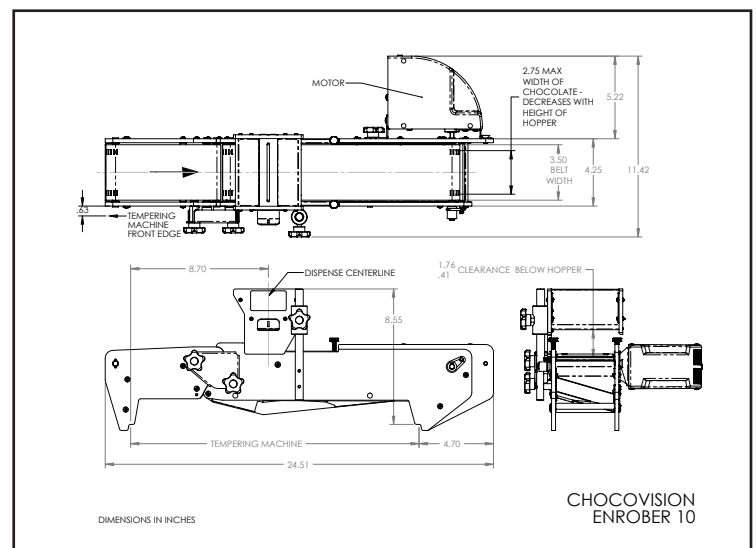
Model	Part #	Description
Enrober 10	C116ENROBER#10D	Enrobing Belt Attachment for Revolution Delta

FEATURES

- 4" Wide, Food Safe Stainless Steel Conveyor Belt
- Top and Bottom Coating
- Variable Belt Speed
- Adjustable Hopper Height
- Adjustable Product Guides
- Simple 2 Piece Design - Easy to Disassemble and Clean
- Designed for use with Revolution Delta and Skimmer **(Sold separately)**

SPECIFICATIONS

DIMENSIONS	<i>Overall: 24"L x 5"W x 5.5"H</i>	
HOPPER HEIGHT	<i>1.5" Min.; 3" Max</i>	
DISPENSED CHOCOLATE WIDTH	<i>4.5"</i>	
WEIGHT	<i>10 lbs.</i>	
ELECTRICAL	<i>110V, 1200 watts, and 2 amps (14 amps total with Delta and Skimmer)</i>	
CORD	<i>7 ft.</i>	
PLUG TYPES	<i>NEMA 5-15 (110V)</i>	
CONTROLS	<i>Variable Speed Knob</i>	
CONSTRUCTION	<i>Stainless Steel with Polycarbonate and ABS</i>	
INCLUDED EQUIPMENT	<i>3 Chocolate Pattern Stencils</i>	



Warranty
One (1) Year Parts and Labor

Environmental Parameters
Best results when ambient temperature is 68-72°F and humidity is below 50%



**Proudly Made
in the USA**