

# ED3-48 Display Case

UL

ALTO-SHAAM

Drive foodservice profits with display cases from Alto-Shaam. LED lighting and mirrored back doors enhance food appearance and boost impulse sales. To not only look but taste great, food is held at optimal, precise temperatures with Halo Heat® technology and top ceramic heaters. Multiple access points and a removable back work shelf makes unloading and loading food effortless for employees. Reduce labor and cleaning time with removable back doors and side panels, and a lifting glass front.

## Standard features

- Fanless, waterless Halo Heat technology
- Overhead LED lighting
- Adjustable thermostats 1-10 per heat zone for top and bottom heat
- Ceramic top heaters
- Operator-side work shelf and cutting board
- Sliding back doors with mirrored glass
- Tempered glass front with self-supported lifting mechanism
- Removable back doors and side glass panels
- One set of 4" [102mm] legs with rubber feet
- Three [3] pan zones to hold standard pan sizes [GN]
- Two [2] heat zones
- Two [2] heat-on indicator lights
- Four [4] long pan dividers [1002584]
- Three [3] short pan dividers [1002585]
- Nine [9] short pan dividers [11318]

Pan* Capacity			
Pan Size	Pan Dimensions		Qty.
Full-Size & One-Third**:	12" x 20" x 2-1/2"	[GN 1/1]	3
	12" x 6" x 2-1/2"	[GN 1/3]	3
Half-Size & One-Third**:	12" x 10" x 2-1/2"	[GN 1/2]	6
	12" x 6" x 2-1/2"	[GN 1/3]	3
Full-Size Sheet Pans:	18" x 26" x 1"		2
Max. Capacity/Volume:	48 lbs [22 kg]	30 qts [36 L]	

\* Pans are not included with display case.  
\*\* Will also accept 4" [100mm] deep pans.



ED3-48 on Mobile Base



ED3-48 With Legs



ED3(SYS)-48  
With Stationary Base

## Configuration

- ☐ ED3-48 with 4-inch legs and rubber feet [standard]
- ☐ ED3-48 with mobile base, standard height
- ☐ ED3-48 with mobile base, short
- ☐ ED3(SYS)-48 with stationary base

## Electrical

- ☐ 208V, 50/60 Hz, 1PH
- ☐ 240V, 50/60 Hz, 1PH

## Options and Accessories

### Panel Color [select one]

- ☐ Black, standard
- ☐ Stainless steel, optional

### End Glass [select one]

- ☐ Clear glass, standard
- ☐ Solar bronze glass, optional [5011353]

### Additional

- ☐ Temperature gauge [GU-48153]
- ☐ Right-mounted scale platform [5001307]
- ☐ Left-mounted scale platform [5001308]
- ☐ Work shelf with gravy lane [5005638]
- ☐ Pan insert [4" deep] [1001990]
- ☐ 1/3 Pan cover-up bar [1008014]
- ☐ Sheet pan divider bar package [5002802]

### Extended warranty

- ☐ One-year warranty extension

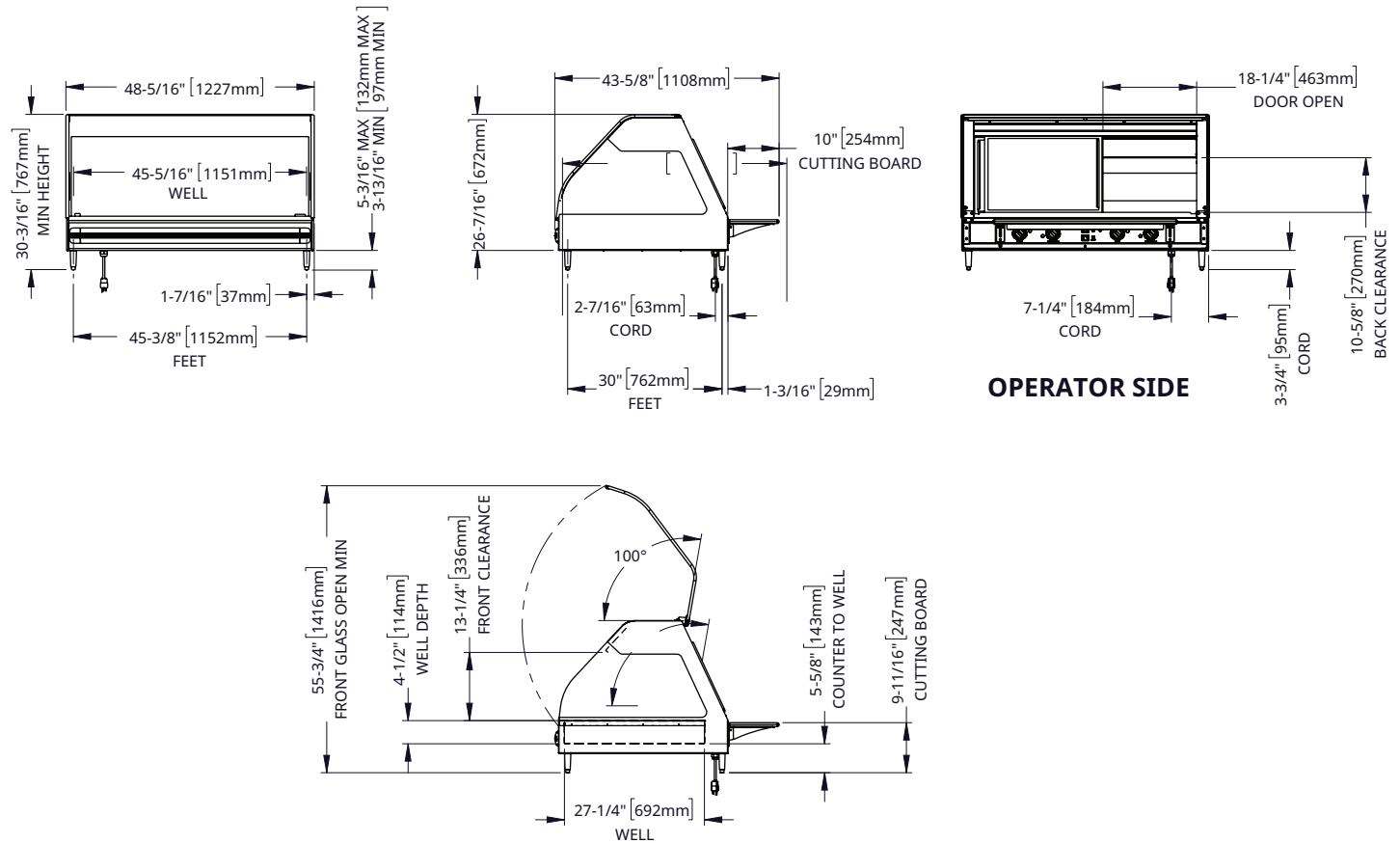


# ED3-48 Display Case



## DIMENSIONS

### ED3-48 with Legs



#### Model

ED3-48  
Feet

#### Exterior (H x W x D)

30-3/16" x 48-5/16" x 43-5/8" [767mm x 1227mm x 1108mm]

#### Ship Dimensions (H x W x D)\*

45" x 52" x 45" [1143mm x 1321mm x 1143mm]

#### Well (W x L x D)

27-1/4" x 45-5/16" x 4-1/2" [692mm x 1151mm x 114mm]

#### Ship Weight\*

372 lb [169 kg]

#### Net Weight

297 lb [135 kg]

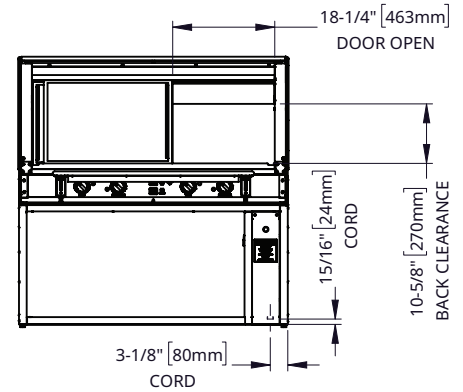
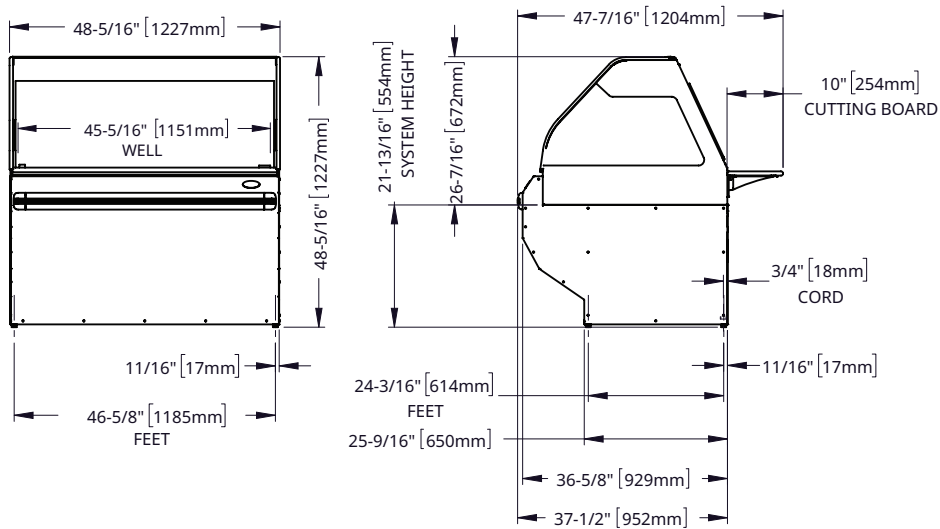
\*Domestic ground shipping information. Contact factory for export weight and dimensions.

# ED3-48 Display Case

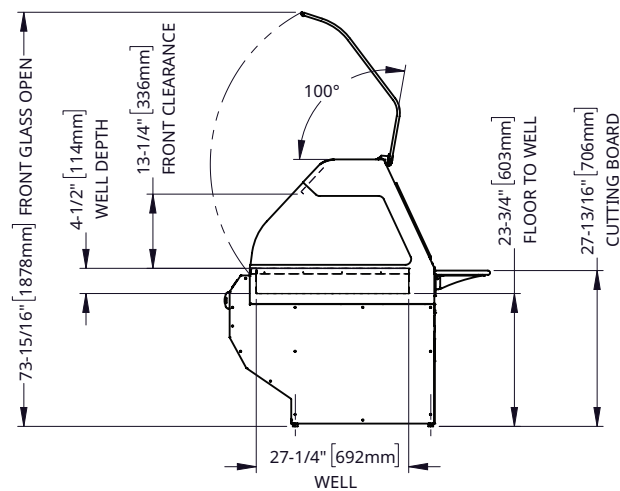


## DIMENSIONS

### ED3[SYS]-48 with Stationary Base



### OPERATOR SIDE



Model	Exterior (H x W x D)
ED3-48	48-5/16" x 48-5/16" x 47-7/16" [1227mm x 1227mm x 1204mm]
SYS	<b>Ship Dimensions (H x W x D)*</b> 65" x 60" x 55" [1651mm x 1524mm x 1397mm]

Well (W x L x D)
27-1/4" x 45-5/16" x 4-1/2" [692mm x 1151mm x 114mm]
<b>Ship Weight*</b> 500 lb [227 kg]

Net Weight
450 lb [204 kg]

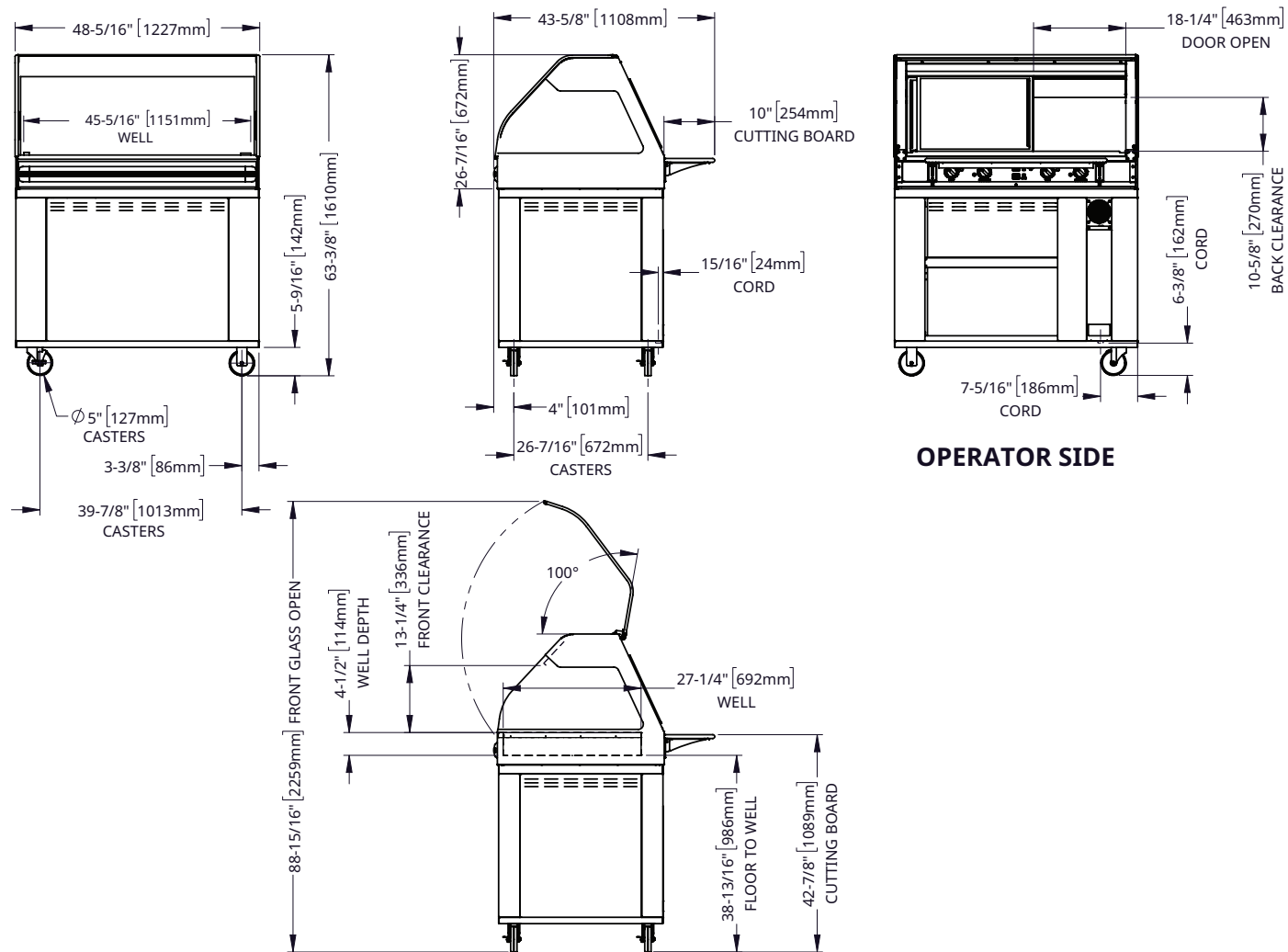
\*Domestic ground shipping information. Contact factory for export weight and dimensions.

# ED3-48 Display Case



## DIMENSIONS

### ED3-48 Standard Mobile Base



Model	Exterior (H x W x D)	Well (W x L x D)	Net Weight
ED3	63-3/18" x 48-5/16" x 43-5/8" [1610mm x 1227mm x 1108mm]	27-1/4" x 45-5/16" x 4-1/2" [692mm x 1151mm x 114mm]	397 lb [180 kg]
Mobile	Ship Dimensions (L x W x H)* 45" x 52" x 82" [1143mm x 1321mm x 2083mm]	Ship Weight* 472 lb [214 kg]	

\*Domestic ground shipping information. Contact factory for export weight and dimensions.

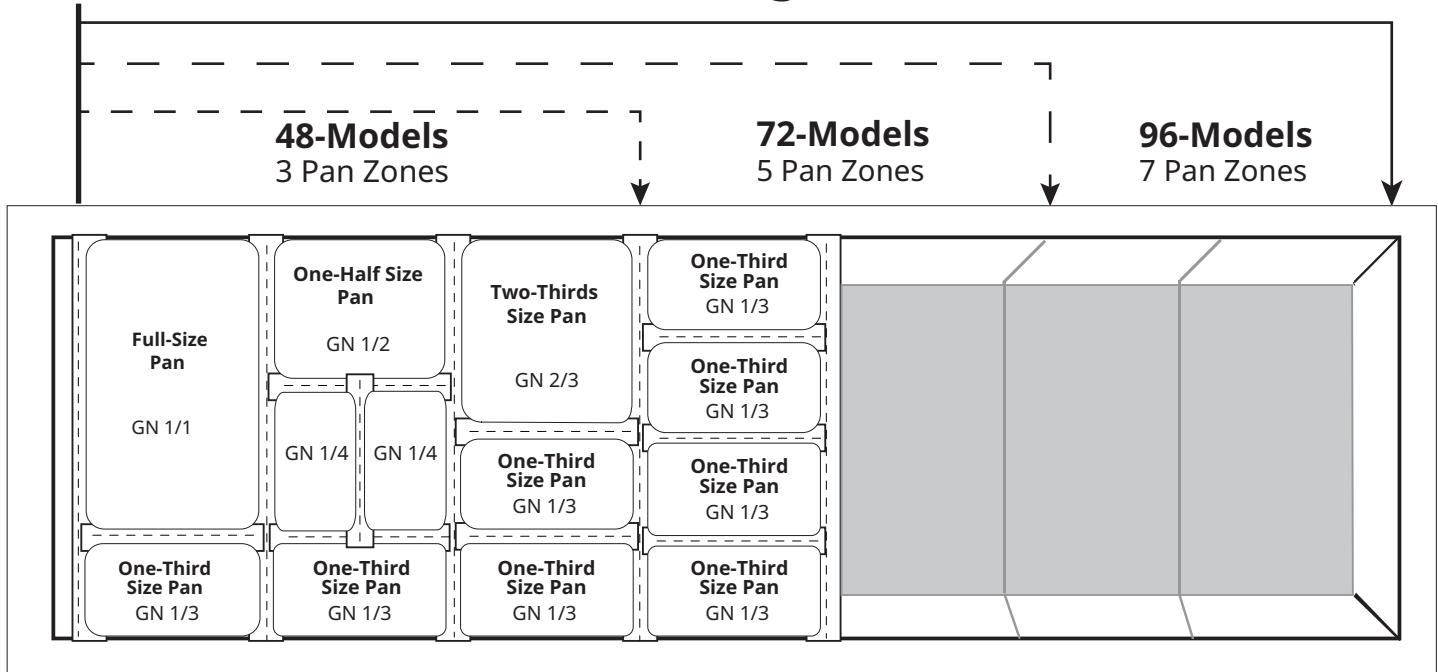
ALTO-SHAAM.

## ED3-48 Short Mobile Base



\*Domestic ground shipping information. Contact factory for export weight and dimensions.

## ED3 Pan Configurations



### Installation Requirements

- The display case must be installed level.
- The display case must not be installed in any area where it may be affected by steam, grease, dripping water, high temperatures, or any other severely adverse conditions.
- Do not install a heated display case near a cold air source such as a freezer, air conditioning vents, or in any area where outside air fluctuation can affect performance.



### 48 Series

ED3-48 With feet	V	Ph	Hz	AWG* minimum	A	Breaker minimum	kW	Connection
	208	1	50/60	14	11.8	15A	2.45	12/3; 6ft; NEMA 6-20
	240	1	50/60	14	13.6	17A	3.26	12/3; 6ft; NEMA 6-20

\*Recommended minimum conductor sized at 90°C and ambient 30°C.  
Electrical connections must meet all applicable federal, state, and local codes.

ED3-48 With base	V	Ph	Hz	AWG* minimum	A	Breaker minimum	kW	Connection
	208	1	50/60	14	11.8	15A	2.45	Cord, no plug
	240	1	50/60	14	13.6	17A	3.26	Cord, no plug

\*Recommended minimum conductor sized at 90°C and ambient 30°C.  
Electrical connections must meet all applicable federal, state, and local codes.

## CONTACT US

W164 N9221 Water Street | Menomonee Falls, Wisconsin 53051 | U.S.A.  
Phone: 262.251.3800 | 800.558.8744 U.S.A./Canada | Fax: 262.251.7067 | [alto-shaam.com](http://alto-shaam.com)