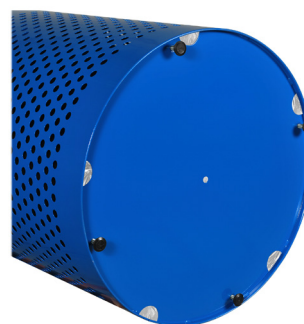
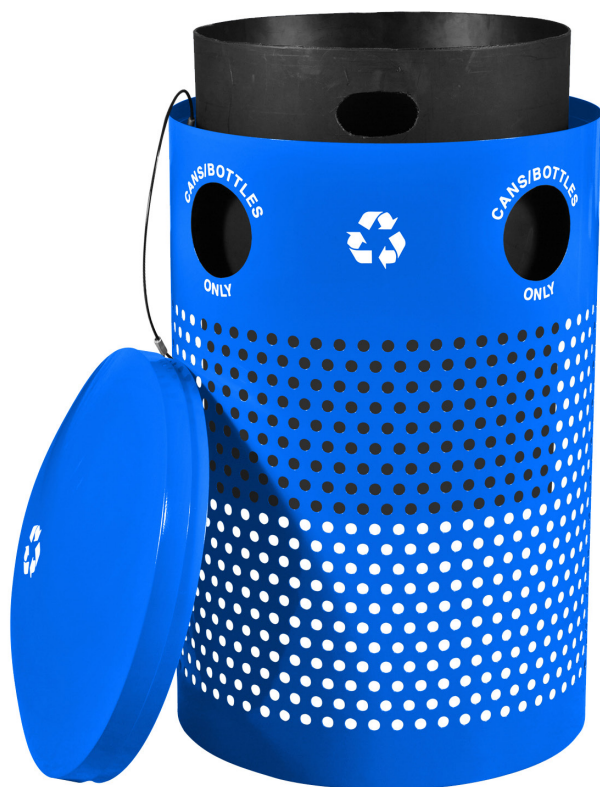


LANDSCAPE SERIES

RC-2441 CANS RBL



The RC-2441 Landscape Receptacle is a large, extremely durable unit built to withstand the elements. Designed for outdoor applications, the Landscape Collection features a 40 gallon capacity and attractive perforated steel construction.

Features and Benefits

- Four openings, each 5" in diameter feature crisp white CANS/BOTTLES ONLY graphics with Mobius (capital) arrows
- Lid is secured to unit with a plastic coated steel cable to prevent theft and vandalism
- Heavy duty feet keep the unit slightly elevated off ground surfaces and pre-drilled 1" holes in bottom of unit allow for in-ground mounting (anchor kit is included)
- Rigid plastic liner features lift holes for easy servicing. The liner base resin meets UL94 Flammability Standard
- Over 30% recycled material and 100% post-consumer recyclable

WR-2441 T BLK	
40	Gallons
24"	Dia
39"	Height
70	Weight (lbs)
Ships on Pallet	

FINISH



(RBL)
Recycle
Blue

REPLACEMENT PARTS

35-049 FG - 40 gal. Plastic Black Liner

