



T&S BRASS AND BRONZE WORKS, INC.

2 Saddleback Cove / P.O. Box 1088
Travelers Rest, SC 29690

Model No.

EC-3100-5XP15T4

Item No.

Travelers Rest, SC: 800-476-4103 • Simi Valley, CA: 800-423-0150 • Fax: 864-834-3518 • www.tsbrass.com



This Space for Architect/Engineer Approval

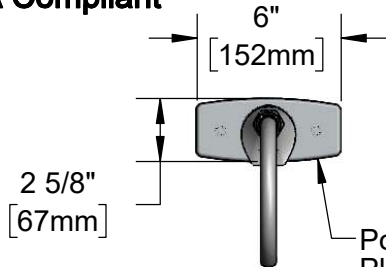
Job Name _____ Date _____

Model Specified _____ Quantity _____

Customer/Wholesaler _____

Contractor _____

Architect/Engineer _____



Polished Chrome
Plated Brass Deck
Plate w/ Deck Gasket

133XP-F15
Swivel Gooseneck
w/ Plain End Outlet &
1.5 GPM Flow Disc
in Swivel Piece.
Converts to Rigid w/
014200-45 Lock
Washer (Included)

3 5/8" x 4 3/16" x 2" Deep
[92mm x 106mm x 51mm]
Water Resistant Control Module Box (Grey)
w/ Internal Flow Control Setting Switches,
AC Plug-in, or DC Operated w/ (4) AA Batteries.
Hardwire Capable Using Terminals on Back

Rigid-to-Swivel
Adapter

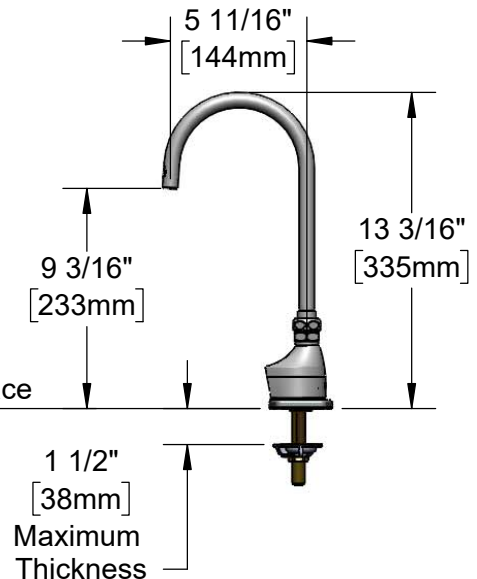
24" [610mm]
Sensor Cable

Removable
Strainer

Mounting Surface

4"
[102mm]

1/2" NPSM x 1/4" NPSM
18" [457mm] Flexible
Stainless Steel Hose



100-240 VAC Adapter
w/ 71" [1800mm] Power Cord.
(Remove Rubber Plugs on Module
and Cable to Connect)

(2) 3/8" Compression x 1/2" NPSM
18" [457mm] Flexible Stainless Steel
Supply Hose

Rough-In Requirement:
Ø 1" [25mm] Center Hole
(2) Ø 1 1/8" [29mm] Side Mounting Holes

EC-TMV
ASSE 1070 Thermostatic Temperature
Mixing Valve w/ Integral Check Valves

Product Specifications:

Chrome Plated Brass Electronic Faucet: Single Hole Deck Mount Swivel Gooseneck w/ Plain End Outlet, 1.5 GPM Flow Disc in Swivel Piece, Rigid-to-Swivel Adapter, Deck Plate, AC/DC Control Module w/ Internal Flow Control Setting Switches, Thermostatic Temperature Control Mixing Valve w/ Integral Check Valves & 18" Flexible Stainless Steel Supply Hoses

Product Compliance:

ASME A112.18.1 / CSA B125.1
NSF 61 - Section 9
NSF 372 (Low Lead Content)
ANSI A117.1 (ADA)
UL 1951
ASSE 1070 (TMV)

Drawn: KJG Checked: GEF Approved: JHB Date: 12/20/19 Scale: 1:8 Sheet: 1 of 2



T&S BRASS AND BRONZE WORKS, INC.

2 Saddleback Cove / P.O. Box 1088
Travelers Rest, SC 29690

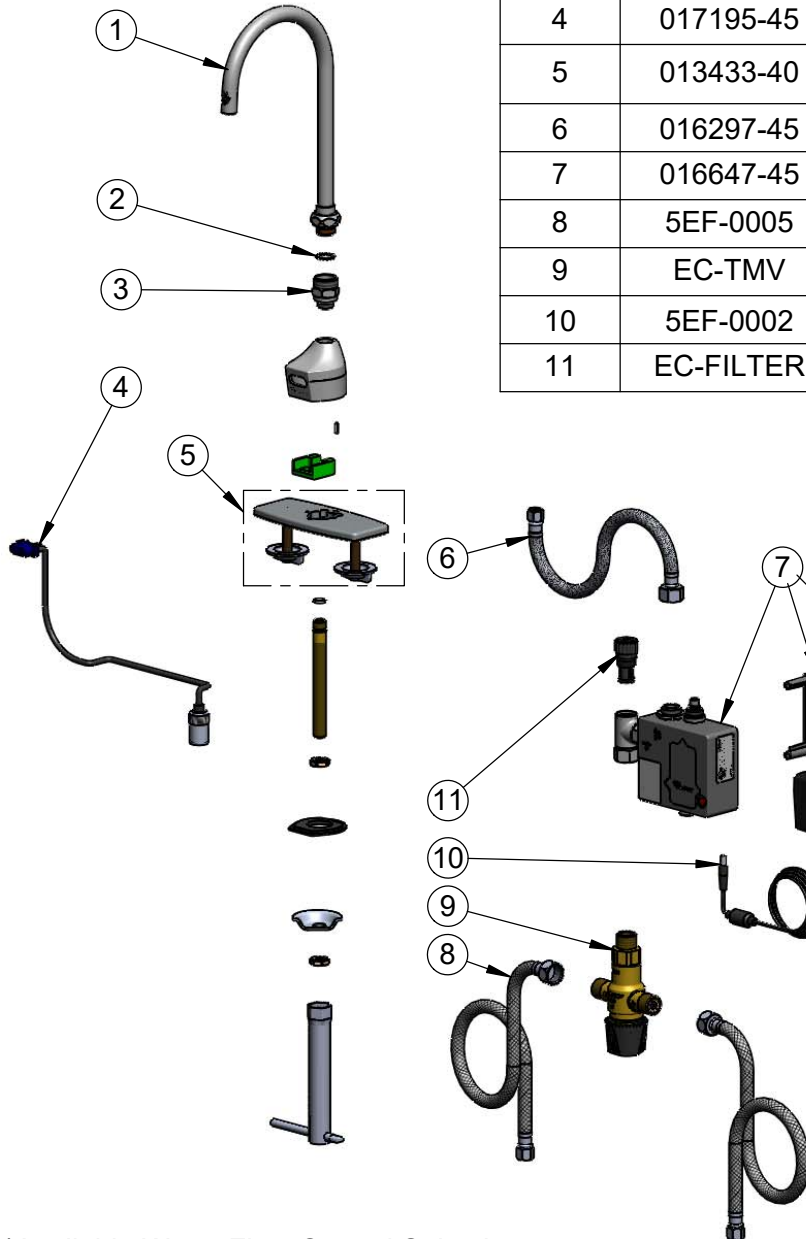
Model No.

EC-3100-5XP15T4

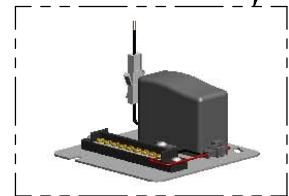
Item No.

Travelers Rest, SC: 800-476-4103 • Simi Valley, CA: 800-423-0150 • Fax: 864-834-3518 • www.tsbrass.com

ITEM NO.	SALES NO.	DESCRIPTION
1	133XP-F15	Swivel Gooseneck w/ Plain End Outlet & 1.5 GPM Flow Disc in Swivel Piece
2	014200-45	Star Washer, Anti-Rotation
3	B-0412	Rigid to Swivel Adapter
4	017195-45	Angled Sensor w/ Cable
5	013433-40	4" Universal Deck Plate, Gasket & Mounting Hardware
6	016297-45	1/2" NPSM-F x 1/4" NPSM-F Inlet Hose
7	016647-45	ChekPoint Electronic Module (Grey)
8	5EF-0005	9/16-24 Female x 1/2" NPSM Supply Hose
9	EC-TMV	ASSE 1070 Thermostatic Mixing Valve
10	5EF-0002	A/C Transformer
11	EC-FILTER	Replacement Filter



A Maximum of (8) ChekPoint Faucets can be Hardwire Connected and Powered by EC-HARDWIRE ChekPoint Hardwire AC Transformer. (Sold Separately)



Label for Flow Control Switch Settings is Located on Inside of Back Cover.

Flow Control Switches are Located Inside Module Housing in Black Box Next to Battery Compartment.

*Switches are Set to DEFAULT Position:

- Auto Time Out = 15 Seconds
- Shut Off Delay = 1 Second
- Auto Flush = OFF

Remove (4) Screws and Back Cover to Access Switches.

*Available Water Flow Control Selections:

- Auto Time Out: 15 sec, 30 sec, 45 sec, 60 sec, 3 min, 20 min
- Shut Off Delay: 1 sec, 10 sec, 15 sec, 30 sec
- Auto Flush (30 Seconds After Every 12 Inactive Hours): ON or OFF

Product Specifications:

Chrome Plated Brass Electronic Faucet: Single Hole Deck Mount Swivel Gooseneck w/ Plain End Outlet, 1.5 GPM Flow Disc in Swivel Piece, Rigid-to-Swivel Adapter, Deck Plate, AC/DC Control Module w/ Internal Flow Control Setting Switches, Thermostatic Temperature Control Mixing Valve w/ Integral Check Valves & 18" Flexible Stainless Steel Supply Hoses

Product Compliance:

ASME A112.18.1 / CSA B125.1
NSF 61 - Section 9
NSF 372 (Low Lead Content)
ANSI A117.1 (ADA)
UL 1951
ASSE 1070 (TMV)