



BEVERAGE-AIR®

| | |
|-----------------|------|
| Project: _____ | AIA# |
| Item: _____ | |
| Location: _____ | SIS# |
| Approved: _____ | |

HORIZONTAL BOTTLE COOLERS

DW64HC Deep Well Series
Hydrocarbon Series

MODEL:
DW64HC-S

DW64HC DEEP WELL SERIES: HORIZONTAL BOTTLE COOLERS



7 Year Parts/Labor Warranty
7 Year Compressor Warranty

CABINET CONSTRUCTION

- Stainless steel exterior
- Galvanized steel interior and floor
- Full electronic control
- Tops include easy glide, stainless steel lids (2)
- Stainless steel countertop with integral glass stops
- Four (4) epoxy coated adjustable wire dividers
- Bottle opener and cap catcher standard
- Constructed with high cooling RPM fans to provide fast cooling

OPTIONS & ACCESSORIES

- Stainless steel interior
- Wire divider
- Lid locks
- 3" Casters or 6" adjustable leg with plate
- Remote option* (see note on back on page)

REFRIGERATION SYSTEM

- Refrigeration system uses R290 refrigerant to comply with all environmental concerns
- Automatic, non-electric defrost
- Epoxy coated evaporator coil
- Forced air refrigeration system holds product between 36° - 40°F



3779 Champion Blvd., Winston-Salem, NC 27105
1-888-845-9800 Fax: 1-336-245-6453
Beverage-Air.com Sales@bevair.com



BEVERAGE-AIR®

| MODEL | DW64HC-S |
|--------------------------------------|---------------------|
| EXTERNAL DIMENSIONAL DATA | |
| Width Overall | 65" |
| Depth Overall | 26 1/2" |
| Depth Overall with Cap Catcher | 27 3/4" |
| Height Overall | 33 3/4" |
| Number of Lids | 2 |
| INTERNAL DIMENSIONAL DATA | |
| NET Capacity (cubic ft.) | 18.5 |
| Internal Width Overall (in) | 61" |
| Internal Depth Overall (in) | 22 3/4" |
| Internal Height Overall at Step (in) | 15 1/2" |
| Internal Height Overall (in) | 26 3/4" |
| Number of Dividers | 4 |
| 12 oz. Bottle Capacity | 25 1/4 Cases |
| 12 oz. Can Capacity | 34 3/4 Cases |
| ELECTRICAL DATA | |
| Full Load Amperes | 2.5 |
| Voltage | 115/60/1 |
| Nema Plug (8' cord) | 5-15P |
| REFRIGERATION DATA | |
| Horsepower | 1/4 |
| Capacity (BTU/Hr) | 1702 |
| Heat Rejection (BTU/Hr) | 2553 |
| Charge (lbs/grams/ounces) | 0.2314 / 105 / 3.71 |
| SHIPPING DATA | |
| Gross Weight - Crated | 332 lbs |
| Height - Crated | 41" |
| Width - Crated | 68" |
| Depth - Crated | 30" |

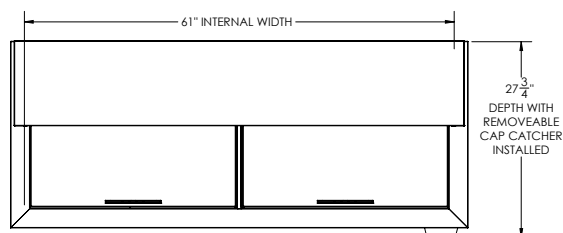
*NOTE: Remote units are field wired and come with 6" legs.
Refrigerant must be specified at time of order.

We reserve the right to change specifications and product design without notice. Such revisions do not entitle the buyer to corresponding changes, improvements, additions or replacements for previously purchased equipment. Dimensional tolerances +/- 1/4". Metric dimensions (MM).

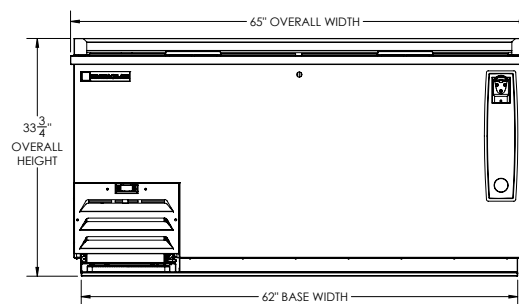
Horizontal Bottle Coolers - Deep Well Model: DW64HC-S

Model Views

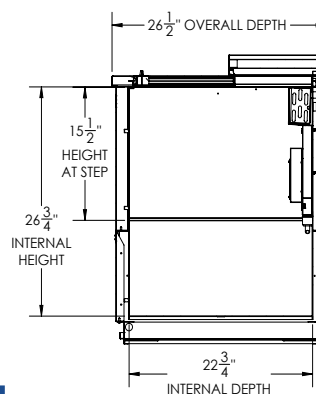
Required Clearance: 3" Sides & Rear



PLAN VIEW



ELEVATION VIEW



SIDE VIEW



ELECTRICAL CONNECTION



115/60/1
NEMA 5-15P

Unit pre-wired at factory
and include 8' long cord
and plug set.

3779 Champion Blvd., Winston-Salem, NC 27105 1-888-845-9800 Fax: 1-336-245-6453 Beverage-Air.com Sales@bevair.com

