



DROP-IN ICE-COOLED UNITS



Drop-in Cold pan units can be placed in existing countertops and other work areas to house items that need to be kept ice cooled. Perfect for cold bar items such as bottle drinks or salad bar items.

FEATURES:

9" deep Ice bin with fiberglass insulation
1" diameter drain

MATERIAL:

TOP: 18 gauge #304 stainless steel
self rimmed

ICE BIN: 20 gauge #300 stainless steel
self rimmed

JACKET: 20 gauge galvanized steel

INSULATION: Styrofoam on sides,
polyurethane foam on bottom

MOLDING: Extruded black polyethylene
thermal breaker

PLUMBING:

Drain is 1" I.P.S.

Item #: _____ Qty #: _____

Model #: _____

Project #: _____



DICP-2 Shown

STANDARD SERIES

Model #	O.A. Length (L)	O.A. Width (W)	Inside Length (B)	Body Length (C)	Cut-Out Size (Unit)	Ice Capacity (lbs)	Weight (lbs)	Cubic Feet
DICP-1	20"	26 3/4"	14 15/16	18 5/16	25 1/2" x 18 5/8"	56	129	1.75
DICP-2	33 1/2"	26 3/4"	28 7/16"	31 13/16	25 1/2" x 32 1/8"	105	162	3.29
DICP-3	47"	26 3/4"	41 15/16"	45 5/16"	25 1/2" x 45 5/8"	155	165	4.84
DICP-4	60 1/2"	26 3/4"	55 7/16"	58 13/16"	25 1/2" x 59 1/8"	205	199	6.39
DICP-5	74"	26 3/4"	68 15/16"	72 5/16"	25 1/2" x 72 5/8"	254	240	7.93
DICP-6	87 1/2"	26 3/4"	82 7/16"	85 13/16	25 1/2" x 86 1/8"	304	268	9.49



DISLCP-3 Shown

SLIMLINE SERIES

Model #	O.A. Length (L)	O.A. Width (W)	Inside Length (B)	Body Length (C)	Cut-Out Size (Unit)	Ice Capacity (lbs)	Weight (lbs)	Cubic Feet
DISLCP-2	49 5/8"	18 5/8"	44 7/8"	48"	17 3/8" x 48-3/8"	104	168	3.25
DISLCP-3	71 1/4"	18 5/8"	66 1/2"	69 5/8"	17 3/8" x 70"	152	178	4.76
DISLCP-4	92 7/8"	18 5/8"	88 1/4"	91 1/4"	17 3/8" x 91 5/8"	204	215	6.38



Customer Service Available To Assist You 1-800-645-3166 8:30 am - 7:00 pm E.S.T.

For Orders:

Email: customer@advancetabco.com or Fax To: 631-242-6900

For Smart Fabrication™ Quotes:

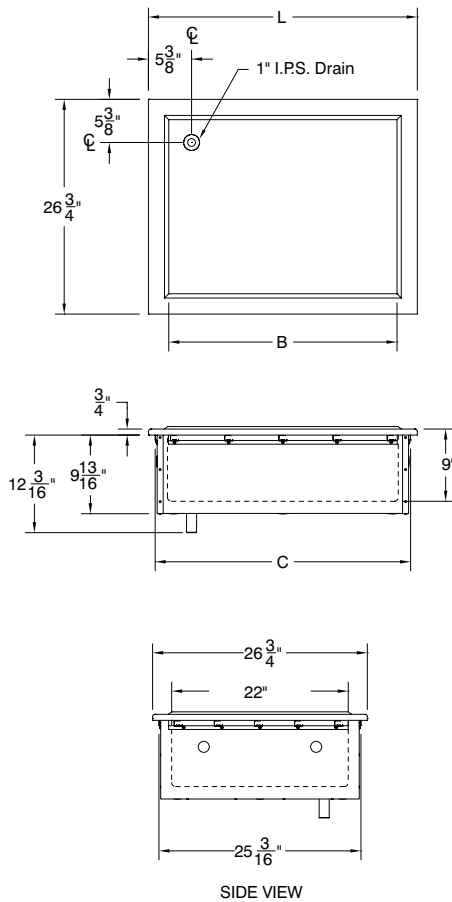
Email: smartfab@advancetabco.com or Fax To: 631-586-2933

DIMENSIONS and SPECIFICATIONS

TOL ± .125"

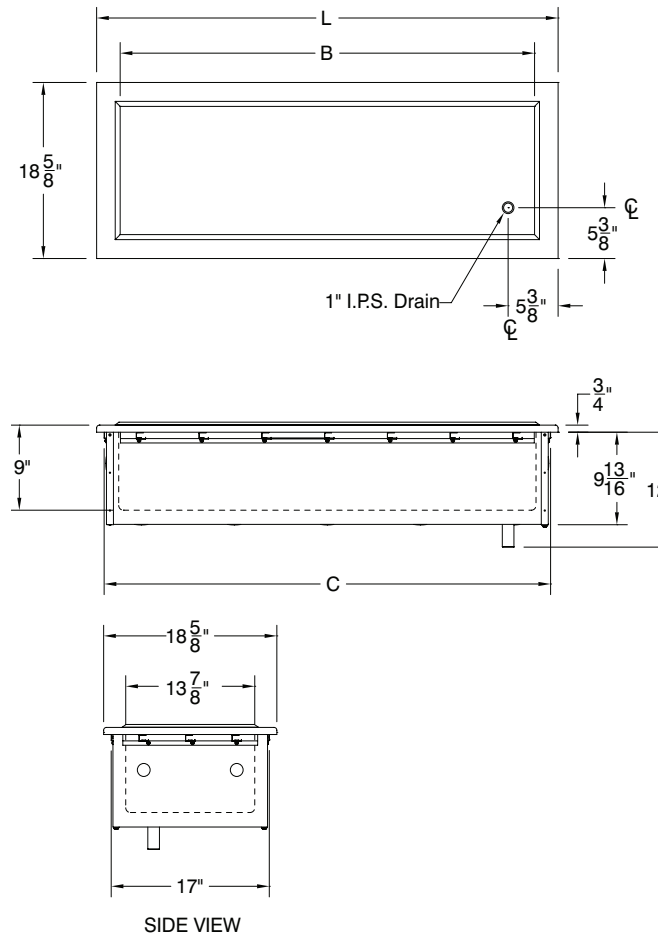
ALL DIMENSIONS ARE TYPICAL

DICP SERIES



SIDE VIEW

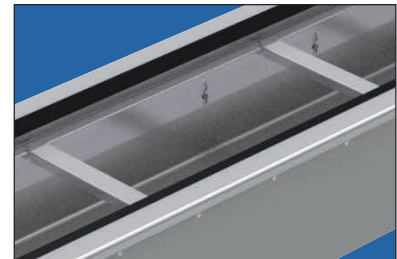
DISLCP SERIES



SIDE VIEW

OPTIONAL ACCESSORIES

SU-45A 12" x 1" Adapter Bar **SU-45B 20" x 3" Adapter Bar**
 (Adapter Bars Require Additional Front To Back Rail Support & Left To Right Rail Support.
 See Chart Below For Proper Compatible Rails)



DICP SERIES		DISLCP SERIES		Description
Model #	Fits Model:	Model #	Fits Model:	
SU-P-500	ALL DICP	SU-P-510	ALL DISLCP	Replacement Front To Back Pan Support Rail (Each)
SU-P-501	DICP-1			Support Rail Set (Set Of 4). Includes Mounting Screws.
SU-P-502	DICP-2	SU-P-512	DISLCP-2	Support Rail Set (Set Of 4). Includes Mounting Screws.
SU-P-503	DICP-3	SU-P-513	DISLCP-3	Support Rail Set (Set Of 4). Includes Mounting Screws.
SU-P-504	DICP-4	SU-P-514	DISLCP-4	Support Rail Set (Set Of 4). Includes Mounting Screws.
SU-P-505	DICP-5			Support Rail Set (Set Of 4). Includes Mounting Screws.
SU-P-506	DICP-6			Support Rail Set (Set Of 4). Includes Mounting Screws.

