

# STAINLESS STEEL Drop-In Water Stations With Iced Bin and Filler Faucet



**D-24-WSIBL**  
21" x 18"



**D-24-WSIBL2**  
18" x 21"

Item #: \_\_\_\_\_ Qty #: \_\_\_\_\_  
Model #: \_\_\_\_\_  
Project #: \_\_\_\_\_



## FEATURES:

Removable grate covers drip pan.  
Rubber thermal breaker to reduce condensation.  
Supplied with stainless steel sliding cover.

## MECHANICAL:

1" IPS drain (drip pan and ice bin)  
Filler faucet has a cold connection with 1/2" IPS  
**Faucet meets federal lead free standards.**

## MATERIAL:

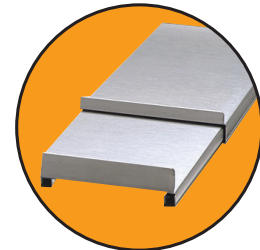
**Jacket:** 20 gauge galvanized steel  
**Ice Bin:** 20 gauge, 300 stainless steel  
**Cover:** 20 gauge stainless steel (7:00 pmSIBL and 7:00 pmSIBL2 only)  
**Molding:** Extruded black polyethylene thermal breaker marine edge  
**Insulation:** 2lbs. density foam-in-place insulation

## OPTIONAL:

**D-12:** Replacement sliding stainless steel cover



**Units Include K-54  
Filler Faucet**



**Units Include Sliding  
Stainless Steel Cover**

| Model #     | Description              | Outside Dimensions | Cut-Out Size      | Ice Capacity | Approx. Weight | Approx. Cu. Ft. |
|-------------|--------------------------|--------------------|-------------------|--------------|----------------|-----------------|
| D-24-WSIBL  | Water Station w/ Ice Bin | 21" x 18"          | 20 5/8" x 15 1/4" | 23 lbs.      | 30 lbs.        | 5               |
| D-24-WSIBL2 | Water Station w/ Ice Bin | 18" x 21"          | 15 1/4" x 20 5/8" | 50 lbs.      | 47 lbs.        | 5               |

**WARNING:** Equipment that include faucets on this page may contain a chemical known to the State of California to cause cancer, birth defects or other reproductive harm.

ALL DIMENSIONS ARE TYPICAL

21"

18"

1" I.P.S. DRAIN

After unit has been placed into the mounting surface, re-attach this section and continue plumbing as normal.

