

ITEM #: _____ QTY: _____

MODEL #: _____

PROJECT NAME: _____

62122

3601 S. Banker St. Effingham, IL 62401 • P.O. BOX 609 • Ph: (888) 431-2667 • Fax: (800) 433-2667

“CUCG” CUCINA GRANDE'

FEATURES:

- 2-1/4" THICK EDGE GRAIN NORTHERN HARD ROCK MAPLE TOP
- FINISHED W/ VARNIQUE
- FOOD SERVICE STAINLESS STEEL LEGS, UNDERSHELF AND TOWEL BAR
- 18GA STAINLESS STEEL #3 POLISH, SATIN FINISH
- 35" HIGH OVERALL
- DOVETAILED MAPLE DRAWER W/ STAINLESS STEEL FRONT
- OPTIONAL CUCINA POT RACK: PRG48, PRG60
- OPTIONAL COMMERCIAL GRADE 3" LOCKING CASTERS
- SHIPPED KNOCKDOWN FOR EASE OF ASSEMBLY



CAS23-R



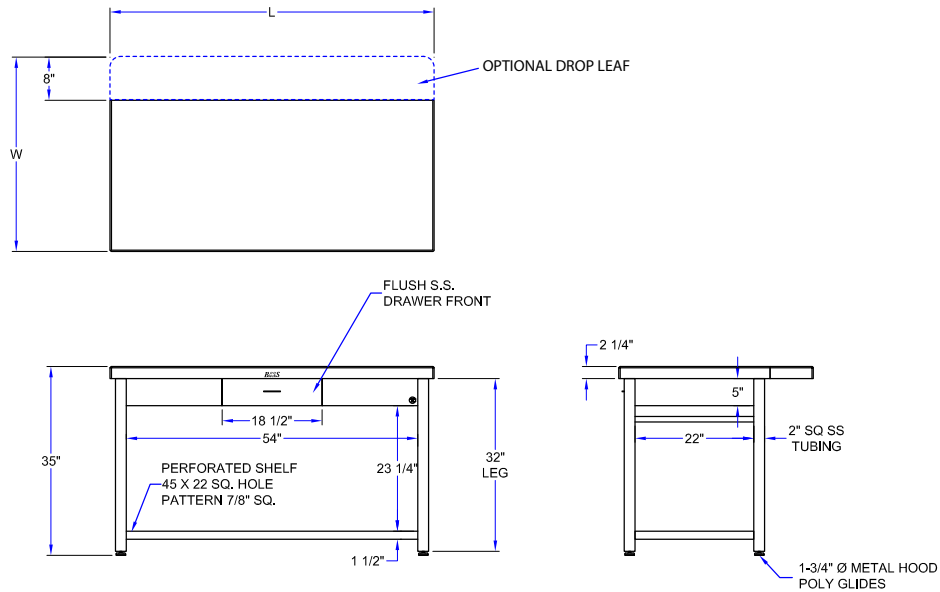
CUCG10, PRG48

CUCINA GRANDE'

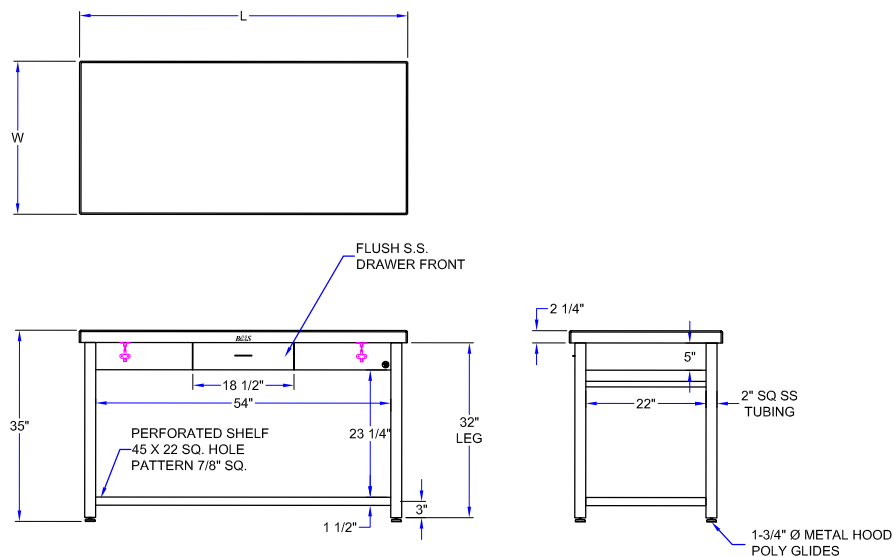
MODEL #	QTY
CUCG10	
CUCG11	
CUCG20	
CUCG21	

DETAILED SPECIFICATIONS

CUCG1



CUCG2



CUCINA GRANDE'

MODEL #	L X W X H	DESCRIPTION	HEIGHT	WEIGHT (LBS)
CUCG10	48" X 36" X 2-1/4"	W/ DROP LEAF	35"	220
CUCG11	60" X 36" X 2-1/4"	W/ DROP LEAF	35"	265
CUCG20	48" X 28" X 2-1/4"	W/OUT DROP LEAF	35"	211
CUCG21	60" X 28" X 2-1/4"	W/OUT DROP LEAF	35"	250

SOME UNITS SHIP UNASSEMBLED FOR REDUCED SHIPPING COST. ALL DIMENSIONS ARE TYPICAL. TOLERANCE +/- .500"
 John Boos & Co. is constantly engaged in a program of improving products and therefore reserves the right to change specifications without prior notice.



3601 S. Banker St. • Effingham, IL 62401 • PO BOX 609 • quotes@johnboos.com

ROOS

AutoQuotes

www.johnboos.com

062122

205