

Cooking Performance Group IDCPG-19A Drop-In Induction Range with Remote Control - 120V, 1900W



FC

5-20P

ETL Sanitation

Approval: _____ Date: _____

- 30 power levels and a 90 to 450 degrees Fahrenheit temperature range
- Includes remote control to easily adjust temperatures and settings
- SCHOTT CERAN® ceramic glass cooking top construction with stainless steel housing
- Induction cooking provides safer alternative to open flames
- 120V, 1900W

Width	12 5/8 Inches
Depth	13 3/8 Inches
Height	4 1/2 Inches
Power Cord Length	4 15/16 Feet
Cooking Surface Diameter	4 3/4 - 10 1/4 Inches
Amps	15.83 Amps
Phase	1 Phase
Voltage	120 Volts
Wattage	1900 Watts
Color	Silver

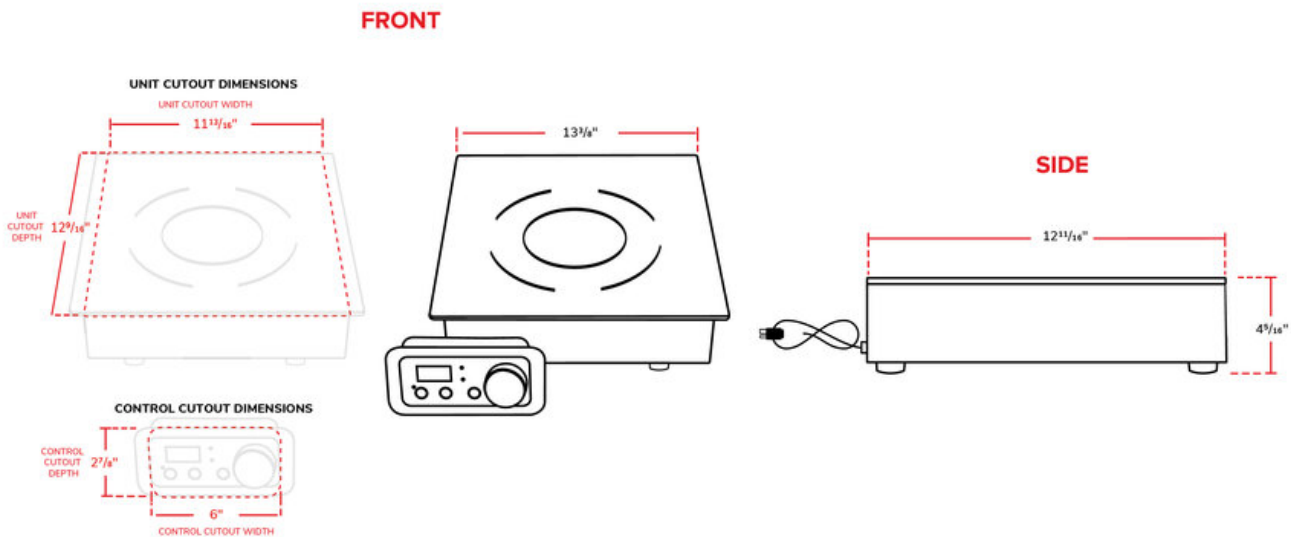
Cooking Performance Group IDCPG-19A Drop-In
Induction Range with Remote Control - 120V,
1900W



Technical Data

Control Type	Dial Digital
Features	Holding Button Rapid Boil Button Remote Control SCHOTT CERAN® Ceramic Glass Timer
Installation Type	Drop-In
Material	Glass Stainless Steel
Number of Burners	Single
Number of Power Levels	30
Plug Type	NEMA 5-20P
Power Type	Electric
Product Type	Equipment
Temperature Range	90 - 450 Degrees F
Type	Induction Ranges
Usage	Medium Duty

Plan View



Cooking Performance Group IDCPG-19A Drop-In Induction Range with Remote Control - 120V, 1900W



Notes & Details

Add a convenient extra burner to your cooking station with this Cooking Performance Group drop-in induction range. This range mounts flush against your countertop surface so you can optimize your counter space. It's the perfect addition to back-of-house supplemental cooking and confectionary areas or front-of-house made-to-order stations and display cooking. This unit comes with a remote control to easily adjust settings, a quick-select holding button, a knob to set the temperature, and the ability to set a timer. This unit is powered by both a digital and knob control, featuring 30 power levels and a temperature range of 90 to 450 degrees Fahrenheit.

This induction cooker is compatible with induction-ready pans that have a bottom diameter between 4 3/4" and 10 1/4". It features two cooling fans and an aluminum mesh filter. The cooking surface is constructed of German SCHOTT CERAN® ceramic glass, and the stainless steel housing makes this unit exceptionally durable while also easy to clean.

With its induction technology, this countertop range generates heat with no open flame. This means less ambient heat in your kitchen, fast heat-up times, and most importantly no open flame or flammable fuels that could be a potential safety hazard. This unit boasts 1900W of cooking power and requires 120V of electrical power for operation.

⚠ WARNING: This product can expose you to chemicals including lead, which are known to the State of California to cause cancer and birth defects or other reproductive harm. For more information, go to www.p65warnings.ca.gov.