



General Information

Project Name: _____

Consultant: _____

Item #: _____

Model #: _____

Quantity: _____



Shown w/ Optional
Top Doors & Flat Top.
Cleaning Supplies
Not Included.



Specifications

CMSC-R Model Combination Mop & Storage Cabinet is constructed of 18GA Type 304 stainless steel with (1) one hinged door on the sink side. The cabinet is 46 1/2" wide x 30" deep x 84" high with a full height compartment separating the 23" long x 26" wide sink from a 20 1/2" long x 30" wide cabinet space with (2) fixed shelves and a ramp to easily roll the mop bucket in for storage.

Utility spray hose and (2) two mop holders are included with the unit.

The upper section of the cabinet has (1) one fixed shelf notched for mop handles.

Sloped top comes standard.



Product Guide

The Combination Mop & Storage Cabinet is designed for use where space is limited and helps follow acceptable sanitary practices in any size facility. Mop buckets for kitchen and customer areas can be easily emptied, cleaned and refilled as needed in the sink side.

The shelf provides storage space for cleaning supplies. Ramp provides an easy way to roll the mop bucket in for storing.

The design features an attractive finish which allows placing this unit in cooking, prepping and customer areas. Compact facilities are particularly suited for use of this unit, as are most other establishments.



Options

- ☐ **FLT** - Flat Top
- ☐ **SDRT-2** - Doors on Top
- ☐ **DRL** - Door Locks (each)
- ☐ Door on Storage/Ramp Side of Cabinet
- ☐ **SCV** - S/S Flat Cover over Sink (for use as temporary storage when sink is not in use)
- ☐ **CIS** - Intermediate Shelf in Top Storage Area
- ☐ Full Height Door (each)
- ☐ **KPSF** - 12" Kettle & Pot Sink Faucet in Lieu of Standard
- ☐ **ASB** - Anti-Splash Sink
- ☐ **MH3** - Mop Holder (3)
- ☐ **MH4** - Mop Holder (4)
- ☐ **LVS** - Side Louvers
- ☐ **IPS2** - 2" IPS Drain

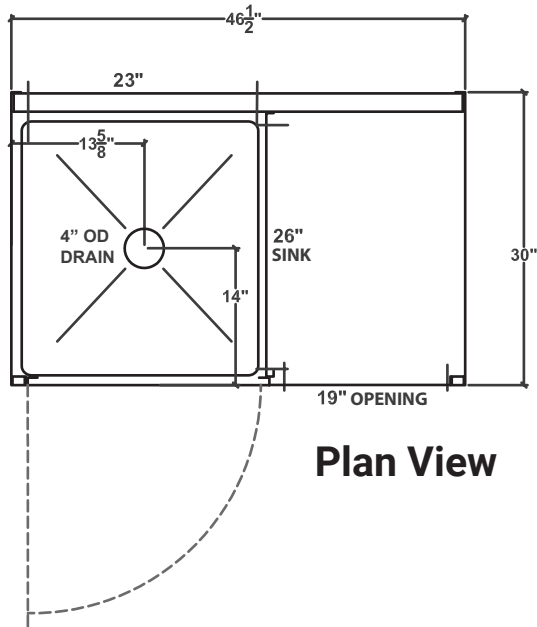
*See Price List for more options



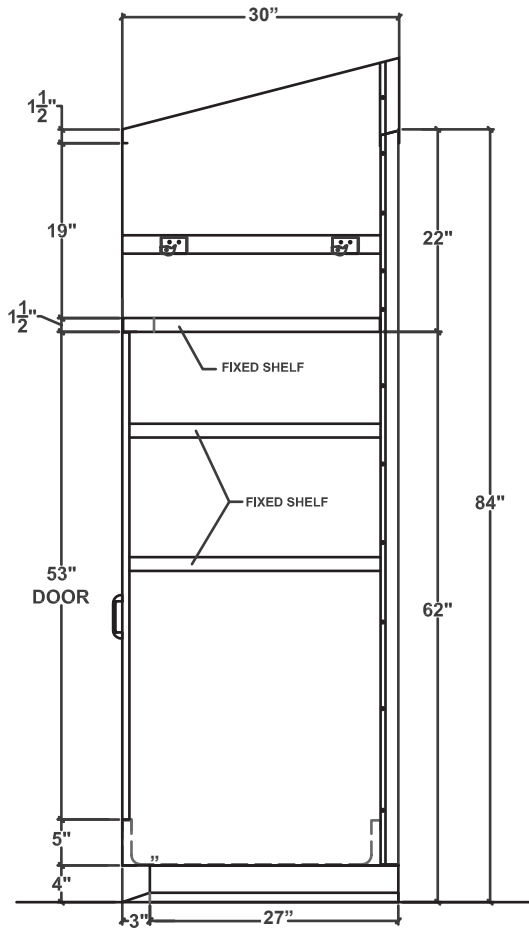
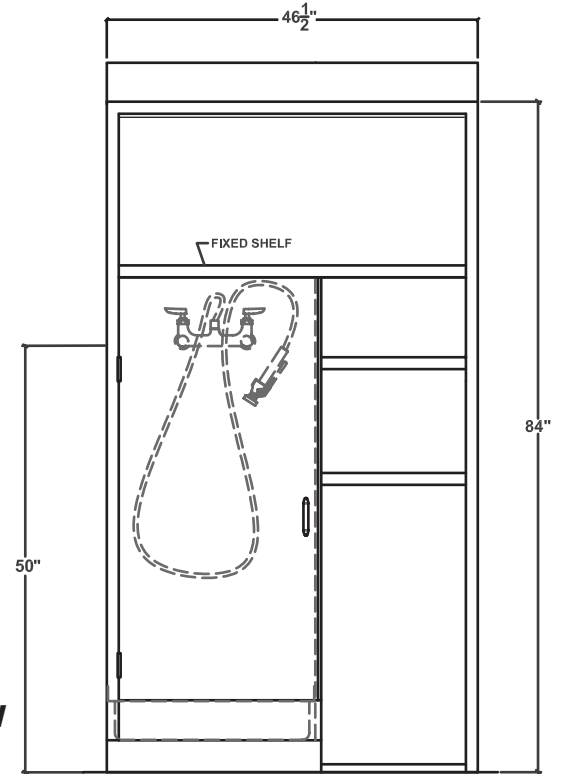
IMC/TEDDY
DECADES OF FINE CRAFTSMANSHIP

CMSC-R

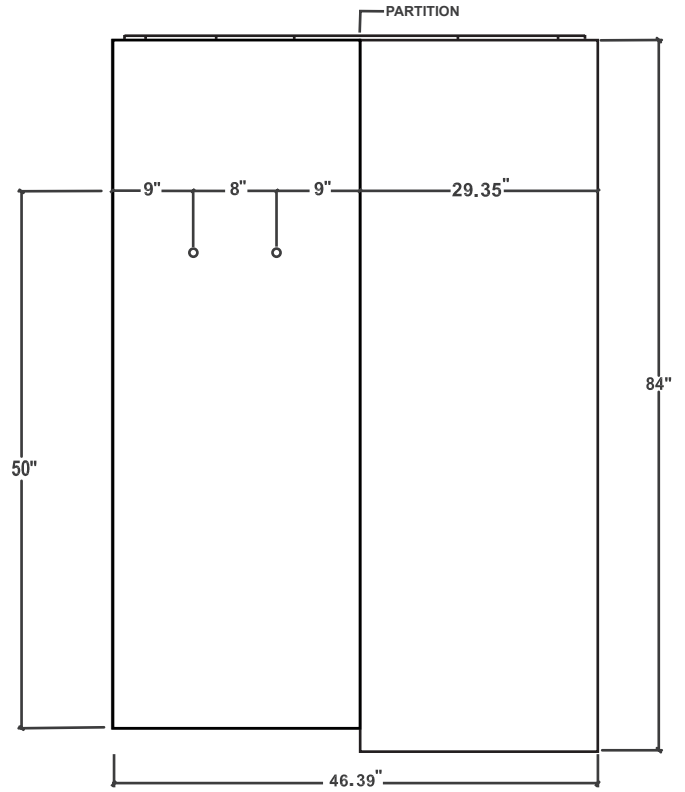
Combination Mop & Storage Cabinet



Front View



Side View



Back View

Specifications subject to change without notice.

CMSC-R-10 0924