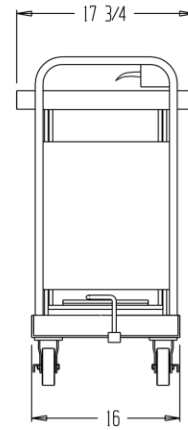
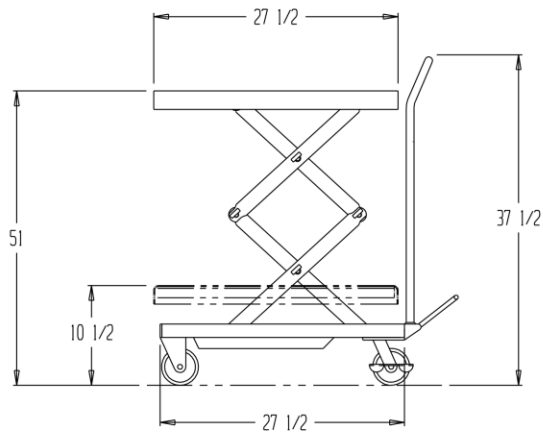


## STAINLESS STEEL HYDRAULIC ELEVATING CART, CART-200-D-PSS



### STANDARD FEATURES

MODEL NUMBER: CART-200-D-PSS  
CAPACITY: 220 LBS.  
PLATFORM: 17 3/4" x 27 1/2"  
PLATFORM RAISED HEIGHT: 51"  
PLATFORM LOWERED HEIGHT: 10 1/2"  
STANDARD SINGLE SPEED FOOT PUMP  
RAISES APPROX. 3" PER PUMP (NOT LOADED)  
PLATFORM, FRAME, HANDLE, CASTER RIGS AND  
HARDWARE ARE STAINLESS STEEL  
SCISSOR LEGS, PUMP ASSEMBLY AND HYDRAULIC  
CYLINDERS ARE ZINC PLATED

### SPECIAL FEATURES

NONE

PRODUCTION WILL START UPON  
RECEIPT OF SIGNED APPROVAL  
DRAWING

\*\*SPECIAL UNITS ARE NON-RETURNABLE  
\*AVAILABLE AT ADDITIONAL COSTS

All graphics provided are for reference only.  
If certain dimensions are critical please  
verify those dimensions with your salesperson

FOR INTERNAL USE ONLY		I, THE UNDERSIGNED, AGREE THAT THE PRODUCT AS REPRESENTED SATISFIES DESIGN & DIMENSION REQUIREMENTS. I ALSO ACKNOWLEDGE MY DUTY TO CONFIRM PRODUCT & INSTALLATION COMPLIANCE WITH ALL APPLICABLE FEDERAL, STATE AND LOCAL REGULATIONS & STANDARDS. <b>ANY MODIFIED UNITS ARE NON-RETURNABLE</b> ( ) As drawn ( ) As marked Signed: _____ Date: _____ Printed Name: _____ LEAD TIME WILL START UPON RECEIPT OF SIGNED APPROVAL DRAWING.
PROJECT SIGN OFF		
SALES		
ENG		
FAB.		
POWER		
DISTRIBUTOR'S NAME: <b>VESTIL MANUFACTURING</b>		
DRAWN BY: _____		DATE: _____
REFERENCE: _____		SCALE: _____
QUOTED LEADTIME: _____		QUOTE #.: _____
		SALES: _____
		DRWG./FILE NAME: <b>CART-200-D-PSS</b>