

SPECIALTY SOLUTIONS

Beer Caves

Custom configured gravity flow shelving to optimize space and increase sales.



www.bofcorp.com



Beer Caves

BOOST BEER SALES, MAXIMIZE PRODUCT MIX AND INCREASE CAPACITY

For store owners looking to offer more cold beverages to their customers beer caves are a popular choice. We've developed products specifically designed to maximize the space available to ensure your Beer Cave can offer the most product per square foot.

Maximize cooler capacity

B-O-F Gravity Flow Shelving maximizes merchandising space in beer caves for increased sales. With industry-leading pack-outs of 27", 36", & 48" depths available, you keep more cold product in front of the customer while reducing out-of-stock appearances.

Fully customizable

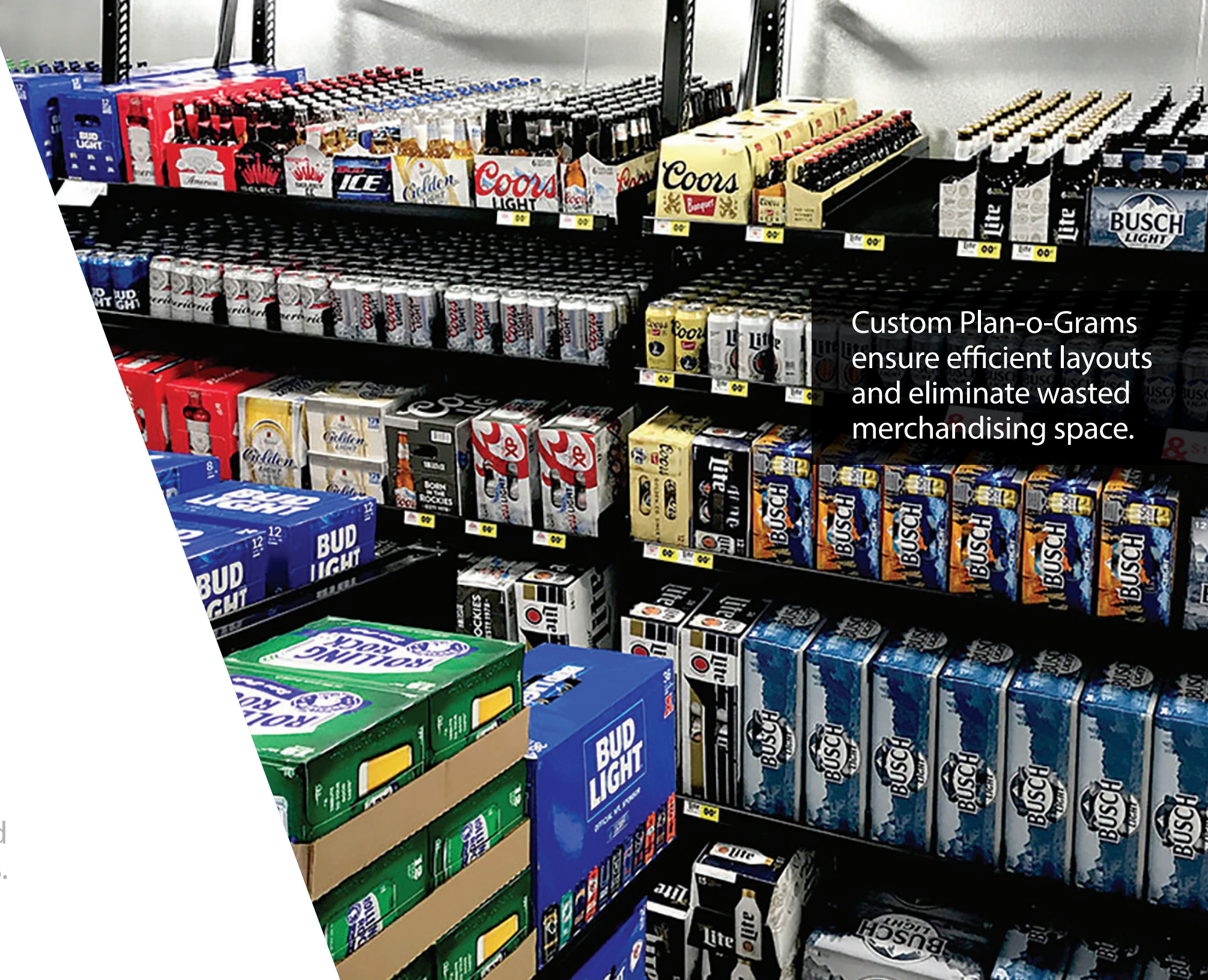
An assortment of shelf widths ensures an efficient plan-o-gram layout without wasted space. Fully adjustable shelf heights and dividers accommodate a wide variety of products. We create fully customized layouts to fit your specific needs.

PERFECT FOR BEER CAVES

Designed to handle your most demanding jobs, our Gravity Flow Shelving works with your heaviest merchandise and reaches greater depths than any other product on the market.



Reduced visual
out-of-stocks lead
to increased sales.



Custom Plan-o-Grams
ensure efficient layouts
and eliminate wasted
merchandising space.



Specifications

| | |
|--------------------------|--|
| Upright post colors | Black, white, or gray |
| Upright post heights | 85" or 91" |
| Shelf width | 24", 26", 28", 30", 48", 60", 72" |
| Shelf depth | 27", 36", 48" |
| Shelf colors | Black, white, or gray |
| Shelf topper | Glide - 1 per shelf glides wider than 30" will get split into two sheets of equal size |
| Shelf topper colors | Black or white |
| Lane divider height | 3" tall |
| Lane divider colors | Black, white, or gray |
| Front product stop | Clear 3½" Plexiglass with 60° bend |
| Side product stop height | 3" tall metal |
| Side product stop colors | Black, white, or gray |
| Rear product stop | Built into shelf |
| Price tag molding colors | Black, white, or gray |

Options

| | |
|--------------------------|---|
| Shelf topper | Roller |
| Custom colors | Available by PMS color |
| Price tag molding | Front with clear splash cover |
| Price tag molding colors | Black or gray |
| Tall front product stop | 6" Plexiglass with 60° bend |
| Custom width | Available |
| Custom depth | Available |
| Custom height | Available |
| Numbered uprights | Marked at each slot |
| Flat corner shelf | Available - needs additional rear upright post |

Deducts

| | |
|----------|------------|
| Uprights | Galvanized |
|----------|------------|

SPECIALTY SOLUTIONS

Beer Caves

Contact us to learn more.

Let us develop a solution to handle your unique merchandising or material handling challenge today.

Phone: +1 800 323 2517

Fax: +1 630 585 0450



www.bofcorp.com

