

Bollards HD Series

Model: BHD5-36

36" Tall Bollard, 5" Dia. with
Cast Aluminum Top & Base Trim

Dimensions: 36" Tall
5" Tube Dia.
1/8" Wall Thickness

Materials:

Tube - 5" O.D. x 1/8" Wall ILG Steel Tube
Top & Base Trim - Cast Aluminum
Hardware - Stainless Steel, Security Bolts

Installation Modes:

- **SP** - Surface Mount, Permanent
- **SR** - Surface Mount, Short-Term Removable
- **SLR** - Surface Mount, Long-Term Removable, with Anchor Cap
- **GP** - Inground Mount, Permanent

Options: - Eye Bolts for chain

Finish:

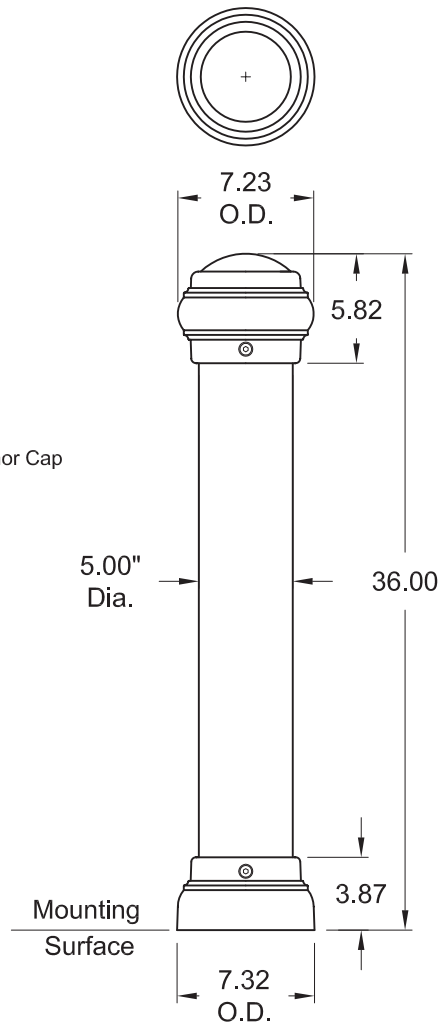
Electrostatically applied polyester powder top coat.
Steel components receive corrosion protection from
an E-Coat Primer.

Notes: Dimensions shown are in inches.

We have endeavoured to insure that all product specifications
listed on this document were correct at the time of publication.
We reserve the right to improve, alter or discontinue
specifications without notice.

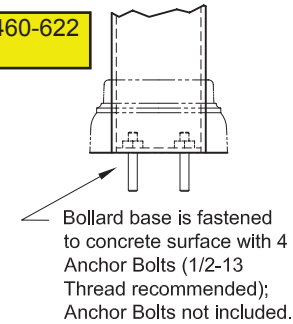
07Feb11

Models:
BHD5-36-SP, SLR and SR

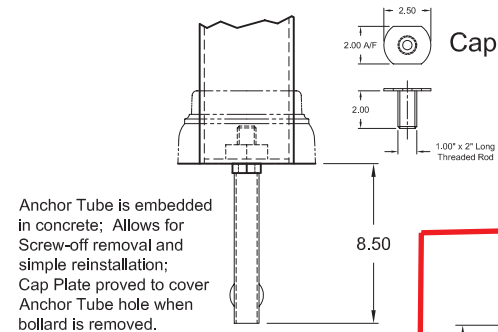


Model BHD5-36-SP
Mounting Detail

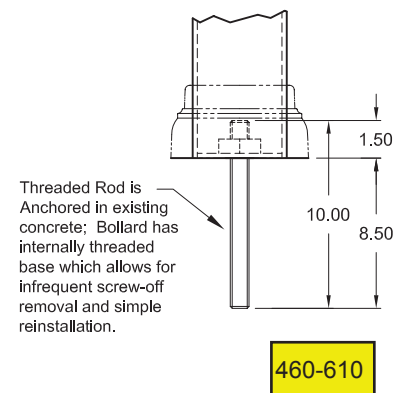
460-622



Model BHD5-36-SLR
Mounting Detail

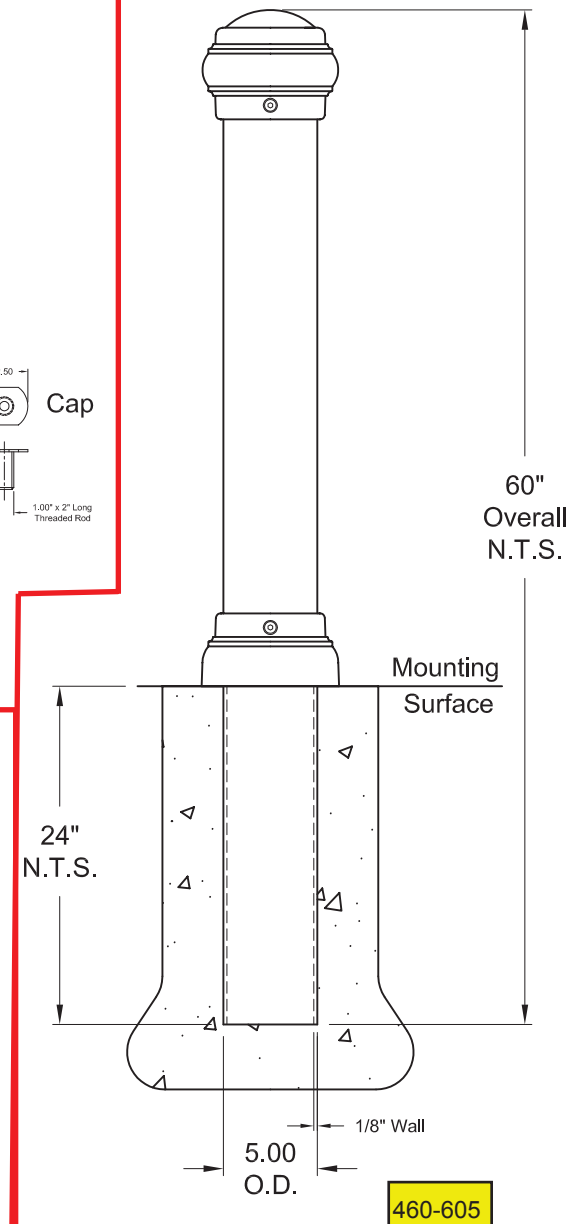


Model BHD5-36-SR
Mounting Detail



460-610

Model BHD5-36-GP
Mounting Detail



460-605