

DEFENDER Walk Ramps



b&p Manufacturing
Engineered Delivery Products

Made in the USA!

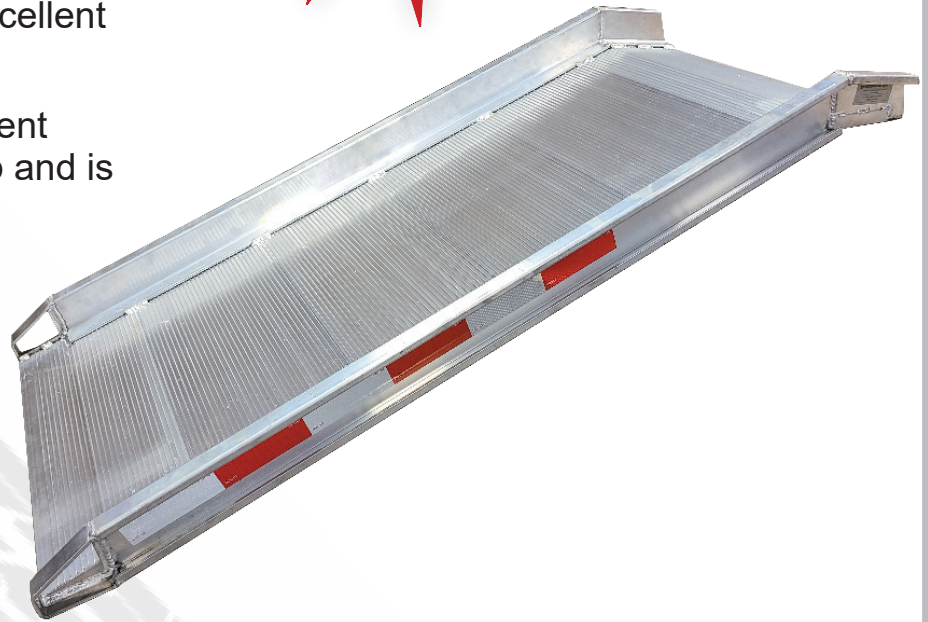


DEFENDER Walk Ramps

High Capacity Walk Ramp (HCR)



- **Fully contoured** extrusions for superior strength.
- **Integrated**, welded handles for reliability and ease of deployment/storage.
- **Twin Tooth** decking provides excellent traction in inclement weather.
- **New side rail** design helps prevent hand truck wheels from riding up and is made of 6000 series aluminum.
- **Features** a safety locking pin on apron end and stop on underside to maintain the correct position.
- **DOT reflective** tape on both sides for low light visibility.



Part #	Dimensions	Capacity
HCR-3006	30" x 6'	4,000 lb
HCR-3012	30" x 12'	4,000 lb
HCR-3014	30" x 14'	4,000 lb
HCR-3016	30" x 16'	4,000 lb
HCR-3506	35" x 6'	4,000 lb
HCR-3512	35" x 12'	4,000 lb
HCR-3514	35" x 14'	4,000 lb
HCR-3516	35" x 16'	4,000 lb
HCR-3906	39" x 6'	4,000 lb
HCR-3912	39" x 12'	4,000 lb
HCR-3914	39" x 14'	4,000 lb
HCR-3916	39" x 16'	4,000 lb

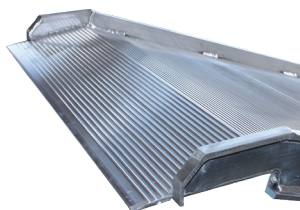
Original Walk Ramps (PR/PRP)

- **Transports** easily in delivery vehicles.
- **Ideal** for deliveries where space is limited.
- **Built-in** handles.
- **Variety** of lengths and widths to choose from or ask about a custom size! From 6ft to 16ft. 26"-40"
- **Choose** between Twin tooth or Twin Tooth Punched for superior traction.
- **Choice** of Apron End or Flush Hook End. (Two 18" safety chains come standard with Apron End option)

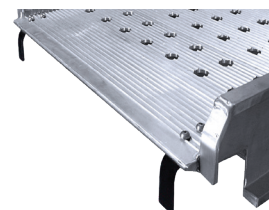
PRP
Twin Tooth
Punch Traction



PR
Twin Tooth
Traction



Type A - Apron End
Level-off apron overlaps
the truck bed



Type F - Flush Hook
Steel hooks lock onto the truck bed
provided flush-type direct entry

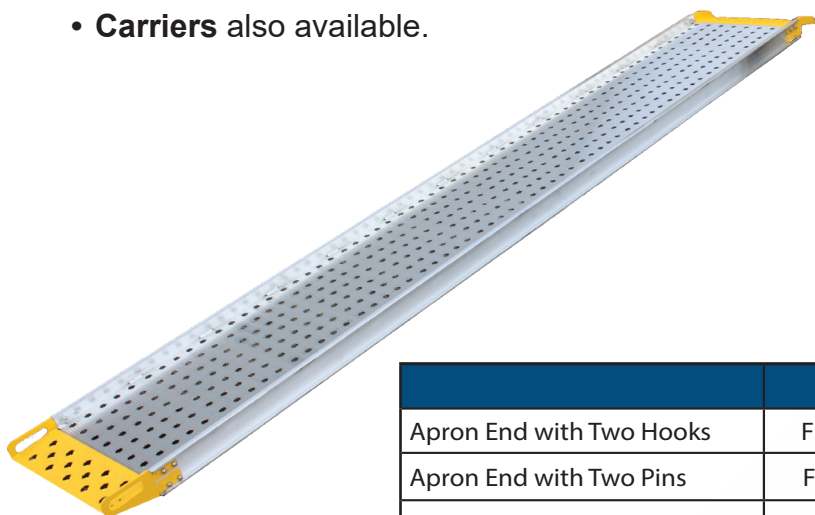
All ramps include our industry leading 2 year warranty!

Extreme length shipping charge for certain sizes.

DEFENDER Walk Ramps

Shared Features of Food Service Ramps

- **Machined** and grooved surface improves traction and will not collect mud, snow or debris.
- **Steel top** and bottom ends are replaceable and powder coated yellow to enhance visibility.
- **Fits in** most truck carriers.
- **Carriers** also available.



Food Service Walk Ramp (FSW)

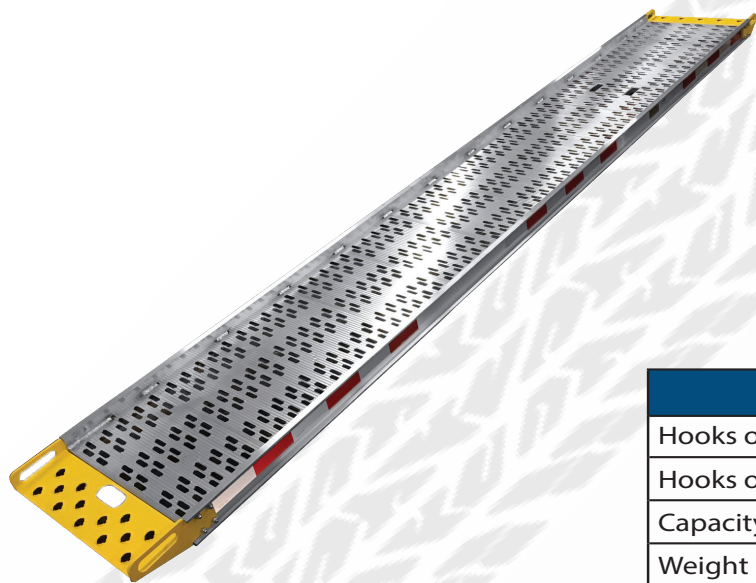
- **Traditional** round punch.
- **Three** different mounting options.

	12 ft	14 ft	16 ft
Apron End with Two Hooks	FSW-2612-AH	FSW-2614-AH	FSW-2616-AH
Apron End with Two Pins	FSW-2612-AP	FSW-2614-AP	FSW-2616-AP
Apron End with Single Pin	FSW-2612-ACP	FSW-2614-ACP	FSW-2616-ACP
Capacity	1,000 lb	1,000 lb	900 lb
Weight	103 lb	110 lb	117 lb

Food Service Walk Ramp (FSW-GFS)

- **Strategically** placed oval punched holes provide optimum traction.
- **Hand slots** in the upper deck aids in deployment/storage, eliminating reaching across the ramp to lift.
- **Integrated** steel handles at each end.

	14 ft	16 ft
Hooks on 22" Centers	FSW-2614-220	FSW-2616-220
Hooks on 22.5" Centers	FSW-2614-225	FSW-2616-225
Capacity	1,300 lb	1,000 lb
Weight	104 lb	118 lb
Each are 26" wide with 24" usable width		



For further information please contact us at 800-334-7141 or bpsales@bpmfg.com
www.bpmfg.com