

Item #: 178Z1FWMS Project: _____

Qty: _____ Date: _____ Approval: _____

Avantco Z1-F-WMS 29" VersaHub WiFi-Enabled Solid Door Stainless Steel Reach-In Freezer

Item #178Z1FWMS



Technical Data

Width	29 Inches
Depth	32 3/16 Inches
Height	81 11/16 Inches
Interior Width	24 3/8 Inches
Interior Depth	27 1/8 Inches
Interior Height	56 11/16 Inches
Amps	3.6 Amps
Hertz	60 Hz
Phase	1 Phase
Voltage	115 Volts

Features

- VersaHub platform monitors unit failure, open doors, and temperature via text/email notifications
- Corrosion-resistant stainless steel interior and exterior
- Versatile shelf supports are 33% stronger than standard shelf clips and can hold full-size food pans
- Rear air duct for exceptional circulation
- R-290 refrigerant; 115V; 2/3 hp
- Note: only the freezer holds the ETL certification

Certifications



ETL Sanitation



Energy Star Qualified



ETL, US

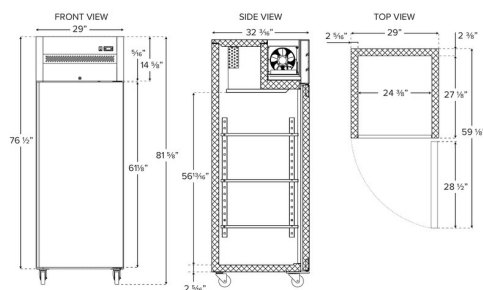


5-15P

Technical Data

Wattage	360 Watts
Access Type	Doors
Capacity	21.68 cu. ft.
Capacity (per Shelf)	120 lb.
Casters	With Casters
Color	Silver
Compressor Location	Top Mounted
Construction	All Stainless Steel
Door Style	Swing
Door Type	Solid
Dutch Half Doors	Without Dutch Half Doors
Features	Automatic Electric Defrost Digital Display Electronic Controller Energy Star Qualified Removable Magnetic Door Gaskets Self-Closing Doors VersaHub Compatible WiFi Enabled
Hinge Location	Right
Horsepower	2/3 hp
Installation Type	Freestanding
Number of Doors	1 Doors
Number of Shelves	3 Shelves
Plug Type	NEMA 5-15P
Refrigerant Type	R-290
Sections	1 Section
Starting Amps	10.8 Amps
Starting Wattage	1080 Watts
Temperature Range	-7 - 0 Degrees F
Type	Freezers
WiFi	802.11n/ac 2.4GHz

Plan View





Notes & Details

Your establishment relies on refrigeration for proper food safety, and with this Avantco Z1-F-WMS 29" VersaHub WiFi-Enabled solid door stainless steel reach-in freezer, you receive performance you can depend on! A corrosion-resistant, all-stainless steel interior and exterior construction provides increased durability and a sleek appearance. This model uses the VersaHub platform to provide live notifications, history, and other WiFi-enabled updates. The self-closing and stay-open locking solid door gives your staff the ability to more quickly and easily load your freezer when you get a delivery. Plus, a door open alarm alerts users to when the door has been open for too long to keep your inventory safe and fresh.

This model features 3 plastic-coated steel shelves that fit in the freezer's pan slides. These slides fit full-size food pans (sold separately) and hold 33% more weight than shelf clips to make loading and unloading a breeze! The full-length U-shaped door handle further expedites the loading process. The door is field reversible for versatile use. Thanks to the rear air duct, this model has exceptional air circulation. Included casters allow users to easily move and clean under the unit.

Designed to maintain temperatures from -7-0 degrees Fahrenheit, this freezer boasts a top-mounted 2/3 hp compressor that uses R-290 refrigerant. This specialized refrigerant has an ozone depletion potential (ODP) of 0 and a global warming potential (GWP) of 3. In addition, the top-mounted compressor is further from the floor than on a bottom-mounted unit; meaning it'll get less dirty and won't be accidentally kicked. For optimal temperature retention, the entire cabinet is foamed-in place using polyurethane insulation. Other helpful features include the state-of-the-art Carel iJ controller, automatic defrosting, and digital temperature control with digital display. This item requires a 115V electrical connection for operation.

⚠ WARNING: This product can expose you to chemicals including lead, which are known to the State of California to cause cancer and birth defects or other reproductive harm. For more information, go to www.p65warnings.ca.gov.