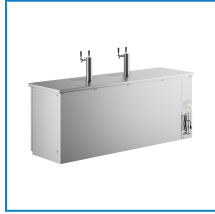


Item #: 178UDD4HCS Project: \_\_\_\_\_

Qty: \_\_\_\_\_ Date: \_\_\_\_\_ Approval: \_\_\_\_\_

## Avantco UDD-4-HC-S Stainless Steel Kegerator / Beer Dispenser with (2) 2 Tap Towers - (3) 1/2 Keg Capacity

Item #178UDD4HCS



### Technical Data

Width	90 1/4 Inches
Depth	27 3/4 Inches
Height	35 5/8 Inches
Power Cord Length	108 Inches
Interior Width	77 3/4 Inches
Left Door Opening Width	21 1/2 Inches
Middle Door Opening Width	21 3/16 Inches
Packaging Width	91 3/4 Inches
Right Door Opening Width	21 1/2 Inches
Shelf Width	22 1/2 - 24 3/4 Inches

### Features

- 4 shelves included for optional bottle and can storage for increased versatility
- 3 self-closing, locking doors to protect inventory
- LED interior lighting
- Includes (4) "D" system couplers
- 115V; 1/4 hp compressor; R290 refrigerant

### Certifications



ETL, US



5-15P

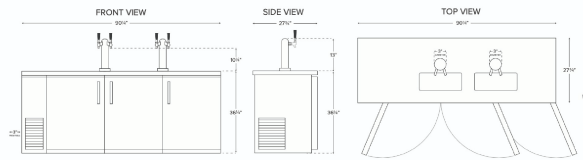


ETL Sanitation

## Technical Data

Nominal Depth	Standard
Packaging Depth	30 1/2 Inches
Shelf Depth	21 1/2 Inches
Faucet Height	10 1/4 Inches
Interior Height	30 1/2 Inches
Packaging Height	41 3/4 Inches
Tap Tower Height	16 Inches
Tap Tower Diameter	3 Inches
Amps	4.1 Amps
Hertz	60 Hz
Phase	1 Phase
Voltage	115 Volts
Wattage	385 Watts
BTU (LBP)	974 BTU
Capacity (per Shelf)	88 lb.
Compressor Location	Left Side Mounted
Door Type	Solid
Exterior Finish	Stainless Steel
Features	Automatic Electric Defrost Digital Temperature Controller LED Lighting Removable Magnetic Door Gaskets
Horsepower	1/4 hp
Insulation Material	Polyurethane Foam
Material	Stainless Steel
Net Volume	32 2/5 cu. ft.
Net Weight	364 lb.
Number of 12 oz. Bottles	480 Bottles
Number of 12 oz. Cans	432 Cans
Number of Doors	3 Doors
Number of Kegs	3 Kegs
Number of Shelves	4 Shelves
Number of Taps	4 Taps
Plug Type	NEMA 5-15P
Refrigerant Capacity	2.5 oz.
Refrigerant Type	R-290
Shelf Material	Epoxy-Coated Steel
Starting Amps	12.3 Amps
Starting Wattage	1155 Watts
Style	1/2 Barrel
Temperature Range	33 - 40 Degrees F
Top Capacity	353 lb.
Type	Kegerators / Beer Dispensers

## Plan View



## Notes & Details

Whether you operate a pub, banquet hall, catering service, or facilitate other special events, this Avantco UDD-4-HC-S (2) two tap beer dispenser is an excellent way to offer crisp, refreshing draft beer to your guests without investing in a complex built-in tap system! This unit features 2 two tap towers with a 10 1/4" faucet height that allows you to easily fill pint glasses and pitchers with local microbrews, international macrobrews, and everything in between.

It holds (3) 1/2 kegs so you can stock up on one brew or offer customers a selection to choose from, and it even comes with 4 shelves for optional bottle or can storage while concealing the product behind 3 solid doors. The doors themselves are not only self-closing to prevent potential energy loss, but also lock to prevent theft during off hours. This unit is equipped with knockout plugs to install external CO2 lines.

Unlike many competitive beer dispensers, this model ships with "D" system couplers so that you can tap kegs right out of the box! This commercial kegerator features a sleek stainless steel finish and a 1 1/2" thick stainless steel top that is both durable and extremely simple to clean, while a built-in drip tray further expedites end-of-day cleaning.

This unit has a 1/4 hp refrigeration system that circulates R-290 hydrocarbon refrigerant. R290 refrigerant has an ozone depletion potential (ODP) of 0 and a global warming potential (GWP) of 3. A 115V electrical connection is required for operation.

**⚠ WARNING:** This product can expose you to chemicals including lead, which are known to the State of California to cause cancer and birth defects or other reproductive harm. For more information, go to [www.p65warnings.ca.gov](http://www.p65warnings.ca.gov).