

Item #: 178SSWT60FA Project: \_\_\_\_\_

Qty: \_\_\_\_\_ Date: \_\_\_\_\_ Approval: \_\_\_\_\_

## Avantco SS-WT-60F-HC 60" Two Door Stainless Steel ADA Height Worktop Freezer with 3 1/2" Backsplash

Item #178SSWT60FA



### Technical Data

Width	60 1/4 Inches
Depth	29 1/2 Inches
Height	37 1/8 Inches
Power Cord Length	84 Inches
Interior Width	55 5/8 Inches
Interior Depth	22 7/8 Inches
Interior Height	23 1/2 Inches
Work Surface Height	33 5/8 Inches
Amps	4.5 Amps
Hertz	60 Hz

### Features

- 2 1/2" casters make moving simple for easy cleaning and bring the unit to an ADA-compliant working height
- Strong and sleek type 430 stainless steel exterior with 3 1/2" backsplash and type 304 stainless steel interior
- Foamed-in-place polyurethane maintains temperatures from -8 to -1 degrees Fahrenheit
- Easy-to-read digital temperature controller and auto-defrost function
- 115V; 2/3 hp
- Note: only the worktop freezer holds the ETL certification

### Certifications



ADA Compliant



ETL, US



5-15P

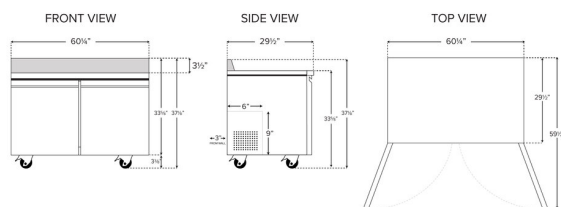


ETL Sanitation

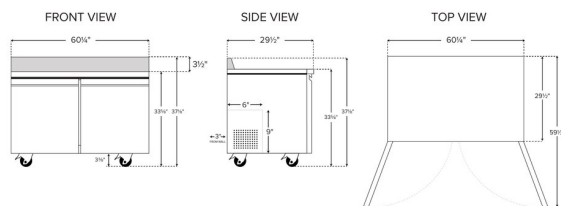
## Technical Data

Phase	1 Phase
Voltage	115 Volts
Wattage	345 Watts
Access Type	Doors
Backsplash	With Backsplash
BTU (LBP)	1692 BTU
Capacity	14.2 cu. ft.
Compressor Location	Rear Mounted
Compressor Style	Side / Rear Breathing
Door Style	Swing
Door Type	Solid
Features	ADA Compliant Removable Magnetic Door Gaskets With Backsplash
Hinge Location	Left Right
Horsepower	3/5 hp
Number of Doors	2 Doors
Number of Shelves	2 Shelves
Plug Type	NEMA 5-15P
Refrigerant Type	R-290
Starting Amps	13.5 Amps
Starting Wattage	1035 Watts
Style	ADA Height
Temperature Range	-8 - -1 Degrees F
Top Capacity	318 lb.

## Plan View



178SSWT60FA



## Notes & Details

Make food preparation as convenient as possible with the Avantco SS-WT-60FA-HC 60" worktop freezer. With a spacious stainless steel worktop surface for slicing, dicing, assembling, mixing, and other food prep tasks, the unit features a 3 1/2" backsplash for wall protection and freezer storage space below. The freezer portion is readily accessible through the two doors, which each open up to a shelf that helps you organize your ingredients and best utilize the roomy interior. Plus, because they each accommodate up to 90 lb., the two epoxy coated steel shelves are well equipped for holding heavy bulk ingredients.

This unit is designed for outstanding durability to ensure that it withstands tough, busy kitchens with ease. It features a type 430 stainless steel exterior, which provides both strength and a smooth, sleek appearance. The interior, made with type 304 stainless steel, also offers the stability necessary for heavy, regular use.

This worktop freezer ensures optimal performance by operating with a 1/4 hp refrigeration system that circulates environmentally-friendly R290 hydrocarbon refrigerant to maintain temperatures from -8 to -1 degree Fahrenheit. R290 refrigerant has an ozone depletion potential (ODP) of 0 and a global warming potential (GWP) of 3, making it an environmentally-responsible choice for your business. The foamed-in-place polyurethane insulation helps to maintain interior temperatures.

Operation of the freezer is easy, thanks to a variety of special features, including an interior wall-mounted thermometer, auto-defrost, and pre-programmed digital controller. 2 1/2" casters make moving simple for easy cleaning and bring the unit to an ADA-compliant working height. This worktop freezer requires a 115V electrical connection for operation.

**⚠ WARNING:** This product can expose you to chemicals including lead, which are known to the State of California to cause cancer and birth defects or other reproductive harm. For more information, go to [www.p65warnings.ca.gov](http://www.p65warnings.ca.gov).