

Item #: 178SSWT36FA Project: \_\_\_\_\_

Qty: \_\_\_\_\_ Date: \_\_\_\_\_ Approval: \_\_\_\_\_

## Avantco SS-WT-36F-HC 36" Two Door Stainless Steel ADA Height Worktop Freezer with 3 1/2" Backsplash

Item #178SSWT36FA



### Technical Data

Width	36 1/4 Inches
Depth	29 1/2 Inches
Height	37 1/8 Inches
Power Cord Length	84 Inches
Interior Width	33 Inches
Interior Depth	22 7/8 Inches
Interior Height	23 1/2 Inches
Work Surface Height	33 5/8 Inches
Amps	4.1 Amps
Hertz	60 Hz

### Features

- 2 1/2" casters make moving simple for easy cleaning and bring the unit to an ADA-compliant working height
- Strong and sleek type 430 stainless steel exterior with 3 1/2" backsplash and type 304 stainless steel interior
- Foamed-in-place polyurethane maintains temperatures from -8 to -1 degrees Fahrenheit
- Easy-to-read digital temperature controller and auto-defrost function
- 115V; 1/2 hp
- Note: only the worktop freezer holds the ETL certification

### Certifications



ETL, US



5-15P



ADA Compliant

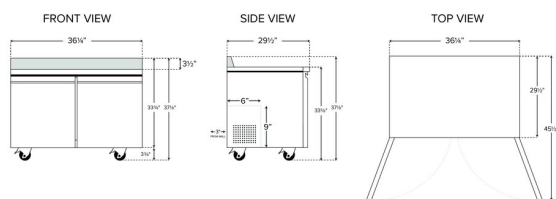


ETL Sanitation

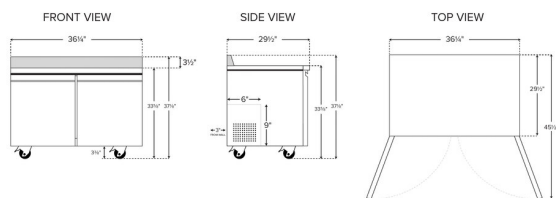
## Technical Data

Phase	1 Phase
Voltage	115 Volts
Wattage	275 Watts
Access Type	Doors
Backsplash	With Backsplash
BTU (LBP)	1264 BTU
Capacity	8.2 cu. ft.
Compressor Location	Rear Mounted
Compressor Style	Side / Rear Breathing
Door Style	Swing
Door Type	Solid
Features	ADA Compliant Removable Magnetic Door Gaskets With Backsplash
Hinge Location	Left Right
Horsepower	1/2 hp
Number of Doors	2 Doors
Number of Shelves	2 Shelves
Plug Type	NEMA 5-15P
Refrigerant Type	R-290
Starting Amps	12.3 Amps
Starting Wattage	825 Watts
Style	ADA Height
Temperature Range	-8 - -1 Degrees F
Top Capacity	318 lb.

## Plan View



1785SWT36FA





## Notes & Details

Make food preparation as convenient as possible with the Avantco SS-WT-36FA-HC 36" worktop freezer. With a spacious stainless steel worktop surface for slicing, dicing, assembling, mixing, and other food prep tasks, the unit features a 3 1/2" backsplash for wall protection and freezer storage space below. The refrigerated portion is readily accessible through the two doors, which open up to two shelves that help you organize your ingredients and best utilize the large interior. Plus, because they each accommodate up to 90 lb., the epoxy coated steel shelves are well equipped for holding heavy bulk ingredients.

This unit is designed for outstanding durability to ensure that it withstands tough, busy kitchens with ease. It features a 430 type stainless steel exterior, which provides both strength and a smooth, sleek appearance. The interior, made with 304 type stainless steel, also offers the stability necessary for heavy, regular use.

This worktop freezer ensures optimal performance by operating with a 1/4 hp refrigeration system that circulates R290 hydrocarbon refrigerant to maintain temperatures from -8 to -1 degree Fahrenheit. R290 refrigerant has an ozone depletion potential (ODP) of 0 and a global warming potential (GWP) of 3. The foamed-in-place polyurethane insulation helps to maintain interior temperatures.

Operation of the freezer is easy, thanks to a variety of special features, including an interior wall-mounted thermometer, auto-defrost, and pre-programmed digital controller. 2 1/2" casters make moving simple for easy cleaning and bring the unit to an ADA-compliant working height. This worktop freezer requires a 115V electrical connection for operation.

**⚠ WARNING:** This product can expose you to chemicals including lead, which are known to the State of California to cause cancer and birth defects or other reproductive harm. For more information, go to [www.p65warnings.ca.gov](http://www.p65warnings.ca.gov).