



Item #: 178SSWT27RA Project: _____

Qty: _____ Date: _____ Approval: _____

Avantco SS-WT-27R-HC 27" Stainless Steel ADA Height Worktop Refrigerator with 3 1/2" Backsplash

Item #178SSWT27RA



Technical Data

Width	27 Inches
Depth	29 1/2 Inches
Height	37 1/8 Inches
Power Cord Length	84 Inches
Interior Width	22 1/4 Inches
Interior Depth	22 7/8 Inches
Interior Height	23 1/2 Inches
Work Surface Height	33 5/8 Inches
Amps	2.2 Amps
Hertz	60 Hz

Features

- 2 1/2" casters make moving simple for easy cleaning and bring the unit to an ADA-compliant working height
- Strong and sleek type 430 stainless steel exterior with 3 1/2" backsplash and type 304 stainless steel interior
- Foamed-in-place polyurethane maintains temperatures from 33 to 40 degrees Fahrenheit
- Easy-to-read digital temperature controller and auto-defrost function
- 115V; 1/4 hp

Certifications



ETL, US



5-15P



ADA Compliant



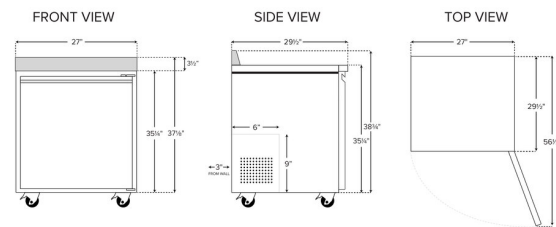
ETL Sanitation

Avantco Refrigeration

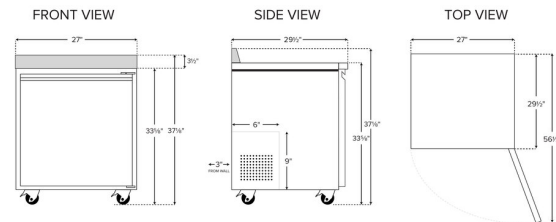
Technical Data

Phase	1 Phase
Voltage	115 Volts
Wattage	210 Watts
Access Type	Doors
Backsplash	With Backsplash
BTU (LBP)	666 BTU
Capacity	5.5 cu. ft.
Color	Silver
Compressor Location	Rear Mounted
Compressor Style	Side / Rear Breathing
Door Style	Swing
Door Type	Solid
Features	ADA Compliant Removable Magnetic Door Gaskets
Hinge Location	Right
Horsepower	1/4 hp
Number of Doors	1 Doors
Number of Shelves	1 Shelf
Plug Type	NEMA 5-15P
Refrigerant Type	R-290
Sections	1 Section
Starting Amps	6.6 Amps
Starting Wattage	630 Watts
Style	ADA Height
Temperature Range	33 - 40 Degrees F
Top Capacity	318 lb.

Plan View



178SSWT27RA





Notes & Details

Make food preparation as convenient as possible with the Avantco SS-WT-27R-HC 27" worktop freezer. With a spacious stainless steel worktop surface for slicing, dicing, assembling, mixing, and other food prep tasks, the unit features a 3 1/2" backsplash for wall protection and freezer storage space below. The freezer portion is readily accessible through the two doors, which each open up to a shelf that helps you organize your ingredients and best utilize the roomy interior. Plus, because they each accommodate up to 90 lb., the two epoxy coated steel shelves are well equipped for holding heavy bulk ingredients.

This unit is designed for outstanding durability to ensure that it withstands tough, busy kitchens with ease. It features a type 430 stainless steel exterior, which provides both strength and a smooth, sleek appearance. The interior, made with type 304 stainless steel, also offers the stability necessary for heavy, regular use.

This worktop freezer ensures optimal performance by operating with a 1/4 hp refrigeration system that circulates R290 hydrocarbon refrigerant to maintain temperatures from -8 to -1 degree Fahrenheit. R290 refrigerant has an ozone depletion potential (ODP) of 0 and a global warming potential (GWP) of 3. The foamed-in-place polyurethane insulation helps to maintain interior temperatures.

Operation of the freezer is easy, thanks to a variety of special features, including an interior wall-mounted thermometer, auto-defrost, and pre-programmed digital controller. 2 1/2" casters make moving simple for easy cleaning and bring the unit to an ADA-compliant working height. This worktop freezer requires a 115V electrical connection for operation.

⚠ WARNING: This product can expose you to chemicals including lead, which are known to the State of California to cause cancer and birth defects or other reproductive harm. For more information, go to www.p65warnings.ca.gov.