

Item #: 178SSPTAM7118 Project: \_\_\_\_\_

Qty: \_\_\_\_\_ Date: \_\_\_\_\_ Approval: \_\_\_\_\_

## Avantco SS-PT-71M-18-A 70" 3 Door Mega Top Stainless Steel ADA Height Refrigerated Sandwich Prep Table with Workstation

Item #178SSPTAM7118



### Technical Data

Width	70 3/8 Inches
Depth	34 Inches
Height	40 1/8 Inches
Power Cord Length	84 Inches
Cutting Board Width	70 3/8 Inches
Interior Width	66 1/2 Inches
Nominal Width	72 Inches
Cutting Board Depth	8 Inches
Interior Depth	23 1/2 Inches
Interior Height	19 3/4 Inches

### Features

- 2 3/4" casters bring the unit to an ADA-compliant working height
- Mega top accommodates (18) 1/6 size, 6" deep food pans (sold separately)
- Industry-best 3/4" cutting board is built-in for convenient prep space and removable for cleaning
- Corrosion-resistant stainless steel exterior and interior; foamed-in-place polyurethane insulation
- Easy-to-read digital temperature control with auto defrost; 115V; R290 refrigerant; 5/6 hp
- Note: only the refrigerated sandwich prep table holds the ETL certification

### Certifications



5-15P



ETL Sanitation



ETL, US & Canada

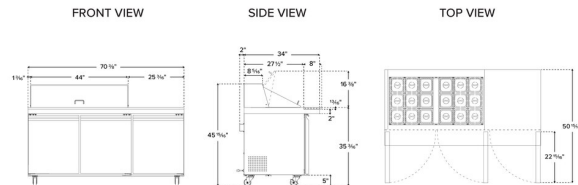


ADA Compliant

## Technical Data

Work Surface Height	33 Inches
Amps	7.8 Amps
Hertz	60 Hz
Phase	1 Phase
Voltage	115 Volts
Wattage	780 Watts
1/6 Size Pan Capacity	18 Pans
Access Type	Doors
BTU (LBP)	2107 BTU
Capacity	19.5 cu. ft.
Capacity (per Shelf)	88 lb.
Casters	With Casters
Color	Silver
Compressor Location	Rear Mounted
Compressor Style	Side / Rear Breathing
Construction	Stainless Steel
Cutting Board Thickness	3/4 Inch
Door Style	Swing
Door Type	Solid
Features	ADA Compliant Removable Magnetic Door Gaskets
Horsepower	5/6 hp
Number of Doors	3 Doors
Number of Shelves	3 Shelves
Plug Type	NEMA 5-15P
Refrigerant Type	R-290
Starting Amps	23.4 Amps
Starting Wattage	2340 Watts
Style	ADA Height
Temperature Range	33 - 40 Degrees F
Top Capacity	318 lb.
Top Type	Mega Top Workstation Refrigerators
Type	Prep Refrigeration

## Plan View



Base model shown. Height and depth may vary depending on variation.



## Notes & Details

Optimize your back-of-house operations and better keep up with customer demands with this Avantco SS-PT-71M-18-A 70" 3 door mega top stainless steel ADA height refrigerated sandwich prep table with workstation! Whether used in a university, sub shop, or hospital, this ADA height unit is sure to help streamline the sandwich prep process with its convenient features and capacity. This unit has a workstation, allowing users to place condiments, utensils, and even a cash register on the unit without sacrificing cutting board space!

Its mega top accommodates up to (18) 1/6 size food pans up to 6" deep (sold separately). These are great for holding common sandwich or salad toppings, from eggs and cheese to green pepper or ham. Plus, a lift-up lid encloses the top to maintain proper, food-safe temperatures.

A full-length cutting board, which is 8" deep, is mounted to the table surface, providing a place for slicing ingredients and assembling orders. This industry-best cutting board is 3/4" thick for added durability and reliability. It is built-in to the unit for convenient prep space and can be easily removed for cleaning.

Beneath the workspace is additional storage space. Because it's refrigerated, the space is great for storing back-up ingredients, such as deli meat and cheese, as well as less common toppings. three epoxy-coated steel shelves are included and can each accommodate up to 88 lb. of weight, helping to organize your assorted supplies. The three solid swing doors allow users to quickly grab supplies without interrupting workflow.

High quality performance is made possible by the unit's 5/6 hp refrigeration system, which maintains temperatures between 33 and 40 degrees Fahrenheit. It does this by circulating R290 refrigerant. This specialized refrigerant has an ozone depletion potential (ODP) of 0 and a global warming potential (GWP) of 3. Plus, the easy-to-read digital temperature control with auto defrost makes adjusting and maintaining specific temperatures easier than ever!

The unit has a corrosion-resistant construction and is designed with commercial use in mind. It features a 430 type stainless steel exterior and a 201 type stainless steel interior, which is fortified with foamed-in-place polyurethane insulation. The insulation also helps to promote proper temperature retention. The 2 3/4" casters make moving simple for easy cleaning and bring the unit to an ADA-compliant working height. For operation, the prep table requires a 115V electrical connection.

**⚠ WARNING:** This product can expose you to chemicals including lead, which are known to the State of California to cause cancer and birth defects or other reproductive harm. For more information, go to [www.p65warnings.ca.gov](http://www.p65warnings.ca.gov).