



Item #: 194KMC500H3F Project: _____

Qty: _____ Date: _____ Approval: _____

Avantco Ice KMC-500-H3F 30" Air Cooled Modular Full Cube Ice Machine with Ice Dispenser - 497 lb.

Item #194KMC500H3F



Technical Data

Width	30 Inches
Depth	33 1/2 Inches
Height	75 5/8 Inches
Voltage	115 Volts
24 Hour Ice Yield	497 Pounds
Bin Storage Capacity	180 lb.
Color	Silver
Condenser Type	Air Cooled
Dispenser Style	Lever
Exterior Material	Stainless Steel

Certifications

 5-15P

 ETL Sanitation

 ETL, US & Canada

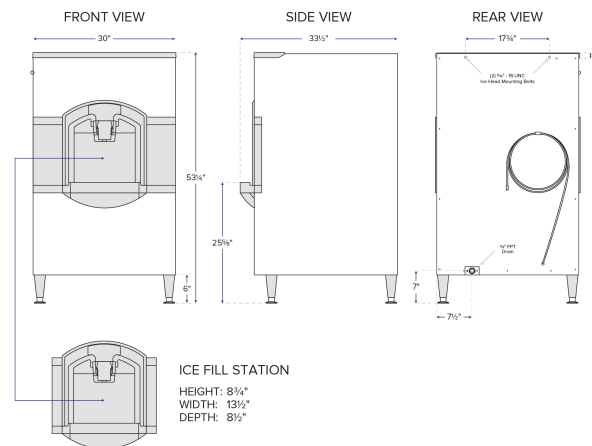
 3/4" Water Connection

 NSF Listed

Technical Data

Features	LED Lighting NSF Listed
Ice Type	Full Size Cubes
Installation Type	Freestanding
Material	Stainless Steel
Plug Type	NEMA 5-15P
Refrigerant Type	R-290
Type	Ice Machines / Dispensers
Water Inlet Size	3/4 Inches

Plan View



INSTALLATION NOTE: ALLOW 6" SPACE AT LEFT, BACK, AND RIGHT SIDES FOR VENTILATION AND UTILITY CONNECTIONS

Notes & Details

Make sure you've always got plenty of fresh ice on hand and easily accessible with the KMC-500-H3F 30" air cooled modular full cube ice machine with dispenser! Capable of producing up to 497 lb. of full cube ice per day, you'll always have plenty of ice to serve on demand at your hotel, bar, or cafe. An included ice dispenser holds up to 180 lb. of ice and features a deep sink to accommodate hotel ice buckets of almost any size.

For ease of maintenance, a built-in diagnostic system will identify problems that your ice machine may be having and will display the issue on the digital controller so it can be repaired accordingly. This easy-to-use controller can also be used to monitor the current stage of ice production that your machine is in. It allows you to adjust the bridge thickness up or down to maximize your harvest into individual cubes of ice, rather than full sheets. It also initiates the cleaning cycle and displays what stage of the cycle you're in. Plus, the ice dispenser has a 3/4 FTP drain fitting.

Constructed of durable type 304 stainless steel with a polyethylene interior, this unit is built to last in the busiest commercial environments. A nickel plated evaporator and removable air filter make for quick and simple cleaning and maintenance. With (4) 6" adjustable legs, you can level your machine on uneven surfaces and have plenty of room to clean under it. This ice machine also comes with pre-drilled holes on the back of the unit to mount your OceanLoch+ water filter to the machine to ensure you are serving the cleanest and freshest ice possible. Designed for side-breathing and rear exhaust, you can avoid hot air being blown outward into your kitchen or service area. This unit requires a 115V electrical connection for operation.

⚠ WARNING: This product can expose you to chemicals including lead, which are known to the State of California to cause cancer and birth defects or other reproductive harm. For more information, go to www.p65warnings.ca.gov.