

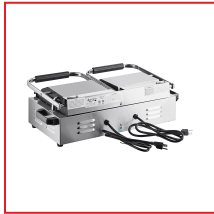


Item #: 177PG400S Project: \_\_\_\_\_

Qty: \_\_\_\_\_ Date: \_\_\_\_\_ Approval: \_\_\_\_\_

# Avantco PG400S Commercial Dual Panini Sandwich Grill with Smooth Plates and 19 5/8" x 9 1/8" Cooking Surface - 120V, 3500W

Item #177PG400S



## Technical Data

Width	22 1/4 Inches
Depth	12 Inches
Height	8 1/4 Inches
Power Cord Length	4 Feet
Cooking Surface Width	19 5/8 Inches
Plate Width	8 1/2 Inches
Cooking Surface Depth	9 1/8 Inches
Plate Depth	8 1/2 Inches
Amps	14.6 Amps Per Side
Hertz	60 Hz

## Features

- Smooth grill plates ensure even heat supply
- Temperature adjusts between 120 and 570 degrees to keep up with high demand
- Heavy-duty stainless steel construction and cast iron plate provides durability
- Great for making paninis, sandwiches, quesadillas, and burgers
- Removable grease tray included for easy cleaning

## Certifications





## Technical Data

Phase	1 Phase
Voltage	120 Volts
Wattage	3500 Watts
Construction	Stainless Steel
Control Type	Dial
Features	Drip Tray
Plate Configuration	Smooth Top & Bottom
Plate Material	Cast Iron
Plug Type	NEMA 5-15P
Power Type	Electric
Size	Dual
Temperature Range	120 - 570 Degrees F

## Notes & Details

Create your most popular sandwiches, quesadillas, hamburgers, and more with the Avantco PG400S dual panini sandwich grill with smooth plates and 19 5/8" x 9 1/8" cooking surface! This sandwich grill features 3500 watts of heating power for fast and thorough cooking. The smooth 8 1/2" x 8 1/2" top plates and 19 5/8" x 9 1/8" bottom plates ensure complete contact with your product and a consistent, even heat supply. In addition, specialized hinges allow the top plate to lay flat against the food rather than at an angle, ensuring complete contact and uniform cooking, and handles on the sides make the unit safe and easy to carry.

To ensure consistency, the thermostatic controls allow you to adjust the temperature of the grill to accommodate the appropriate cooking temperatures for different foods. The temperature is easily adjustable from 120 to 570 degrees Fahrenheit to cook or warm a wide variety of foods, while the stainless steel exterior and cast iron plates ensure long-lasting durability and strength. And thanks to the included drip tray, cleaning up is a breeze after every use. This unit is supplied with 2 plugs and must be operated using 2 separate 120V circuits, therefore must have separate outlets dedicated to each plug. It also features a 4' power cord.

**⚠ WARNING:** This product can expose you to chemicals including lead, which are known to the State of California to cause cancer and birth defects or other reproductive harm. For more information, go to [www.p65warnings.ca.gov](http://www.p65warnings.ca.gov).