

ANTIQUE REPLICA CORKSCREWS



2075

New

2075 Open-Frame Corkscrew with Brush—Antique Replica

English 19th century design. Spiral is inserted into cork by turning the top handle clockwise. The bottom collar of the frame assists in centering the point of the worm into the cork. Then, by turning counter-clockwise, the shaft and worm, along with the cork, rise into the frame. The brush is used for cleaning the bottle neck and the bottle top after the capsule is removed. 6-3/8" H. Pkg Code: BX.

Imprint area on large lever: 1" X 5/16". Metal Laser.



2076

2076 Lazy Tongs Corkscrew—Antique Finish

This is a concertina-type corkscrew. Uses extendable, multi-lever force to remove cork. Cap lifter on each side of lower arm. Early 20th century design. Closed position: 4" high X 4" wide. Extends to 8-1/4". Pkg Code: BX.

Imprint area on large lever: 1-1/4" X 1/4". Metal Laser.



2077

Antique Replicas

2077 Empire Double-Lever Corkscrew—Antique Finish

Levers are directly connected to the worm. Push levers up to form single handle for twisting into the cork. When inserted, pull both levers down. Handles open outward. Late 19th century design. 5-1/2"H., 4-3/4"W. across top. Pkg. Code: BX.

Imprint area across lever arm: 1-3/8" X 1/4". Metal Laser.



2079

Antique Replicas

2079 Barrel Spring Corkscrew—Antique Finish

Copy of an original late 19th Century French corkscrew. Small fork like clip slips into a hole in the shaft to lock the sliding spring barrel. Spring compresses while turning. A resulting counterforce assists in the withdrawal of the cork. 6" tall, 3-1/2" wide at handle. Pkg. Code: BX.

Imprint area: 3/16" X 1" on metal plate screwed to top of handle. Metal Laser.



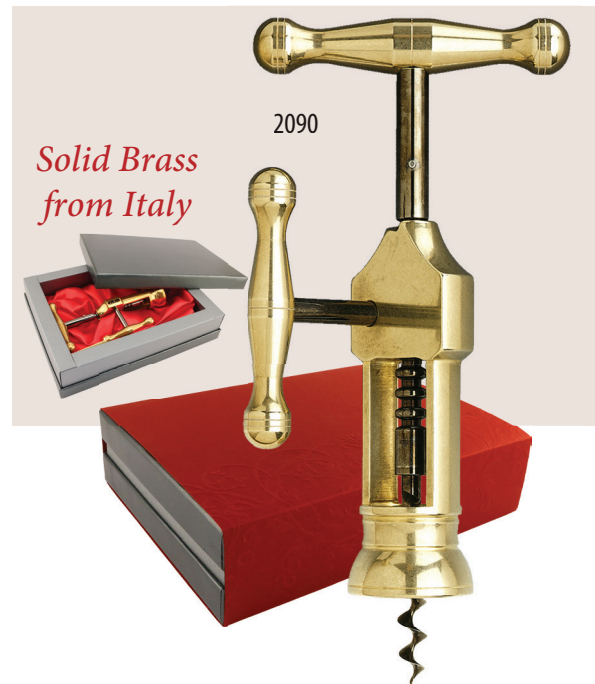
New

2074

2074 Rack & Pinion Corkscrew—Antique Replica

Reproduction of a late 18th Century French corkscrew. Produced in zinc alloy metal with a brass finish. Contains open spiral worm. 6-1/2"H. Pkg Code: BX.

Imprint area: 1" x 5/16". Metal Laser.



2090

Solid Brass
from Italy

2090 King's Corkscrew—Solid Brass (Made in Italy)

Hand finished reproduction of an early 19th Century English Corkscrew featuring a rack and pinion. Antiqued brass. 7-1/2" high. Pkg. Code: BX. (Burgundy 2-piece gift box.)

Imprint area: 1-1/2" X 1/4". Laser.