



Redefining Healthcare Food Service

Induction Plate Activator™ with TempSense™

Item # _____
Quantity _____



Model AIPH1



Application/Features:

- Charges 9" ceramic induction plates for room service or tray line applications
- Built-in TempSense™ heat sensing regulator for consistent heating
- Calibrated plate locator assures precise plate placement on charging surface

Performance:

- Charge time of approximately 20 seconds from ambient temperature
- Hold time of 25 to 30 minutes (with insulated dome)

Construction:

- Stainless steel 18-gauge housing
- High-impact polycarbonate top charging surface
- Rubber feet for non-slip stability

Electrical:

- 120 VAC, 60Hz., 1-Ph.
- Six foot 14-3 grounded power cord with NEMA 5-15P angled plug

Warranty:

- 2-year parts
- 1-year labor

Specification:

Shall be Alluserv Model AIPH1 and shall charge (heat) plates by magnetic induction. Units shall charge 9" induction plates. Induction charger shall have 900 W output. Unit exterior housing shall be of 18-gauge stainless steel (Type 300), and include rubber feet. Top charging surface shall be scratch-resistant polycarbonate, and shall feature a calibrated plate locator to assure precise plate placement on charging surface. Built-in TempSense™ heat sensing device shall be preset to regulate consistent plate temperatures to 210°F. Unit shall operate on 120 VAC, 60Hz, 1-phase, and be supplied with 6' grounded 14-3 power cord with NEMA plug. Unit shall be ETL listed for sanitation and safety and shall have a 2-year parts and 1-year labor warranty.

Made in U.S.A.

Powered by **LAKESIDE®**

901 West 14th Street ♦ Washington MO 63090 USA
tel: 888.892.2213 ♦ 636.239.8441 ♦ www.alluserv.com

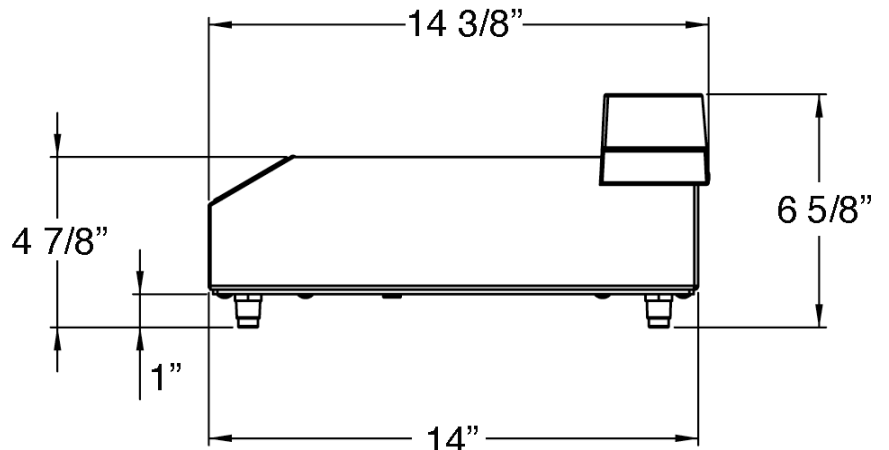
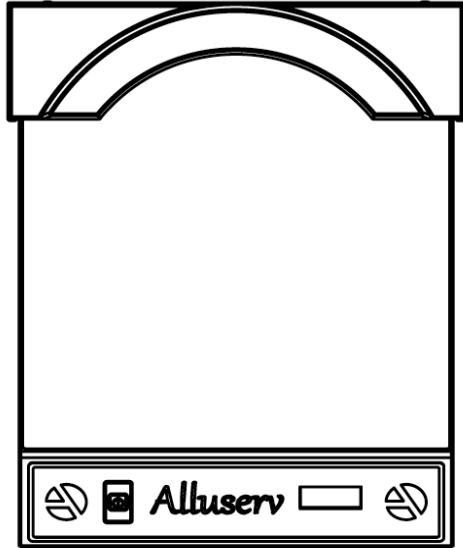
Spec. # _____

AIA # _____

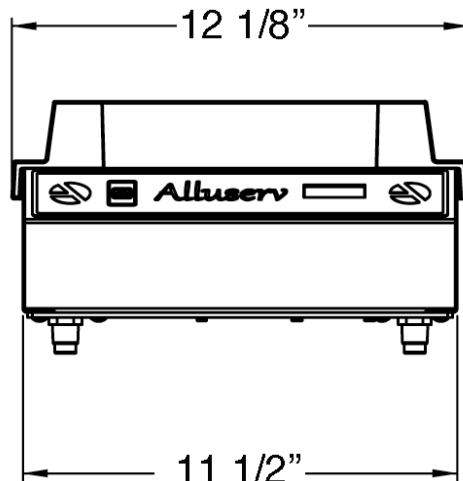


Induction Plate Activator

Top



Side



Front

Model Information

Model	Overall Size			Electrical			Case Wt.		Case Cube
	W	D	H	Watts	Amps	VAC	Lb.	(kg)	
AIPH1	12 1/8" (308)	14 3/8" (365)	6 5/8" (168)	900	7.5	120, 60Hz	22	(9.9)	0.73 (0.04)

Measurements in () denote metric millimeters, unless otherwise specified.

Powered by **LAKE SIDE**

901 West 14th Street ♦ Washington MO 63090 USA
tel: 888.892.2213 ♦ 636.239.8441 ♦ www.alluserv.com