



General Information

Project Name: _____

Consultant: _____

Item #: _____

Model #: _____

Quantity: _____



ADA-WS-SEC-1DX



Specifications

ADA-WS-SEC Model Security ADA Handicap Hand Sink is constructed of 16GA stainless steel type 300 series with integrated backsplash, non-drip marine edges and a large cove corner sink bowl with 1½" waste outlet and a correctional apron with front enclosure.

Removable front enclosure conceals piping and prevents wheel-chair damage. Deck Mounted automatic self-closing faucet Model SCMV is standard.

ADA-WS-SEC-1DX - same as above without faucet.



Product Guide

IMC Hand Sinks are easily cleanable without the use of tools. All corners are coved, and all seams are fully welded and polished.

Large oversize deck provides space for faucet. High backsplash protects wall and keeps sink sanitary. Large integral apron conceals all plumbing.



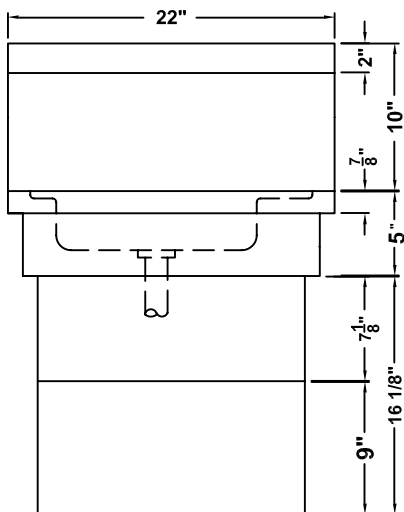
Options

- ☐ **SS** - Side Splashes (Pair)
- ☐ **TWB** - Tubular Wall Brackets
- ☐ **CBW** - Custom Bowl Size

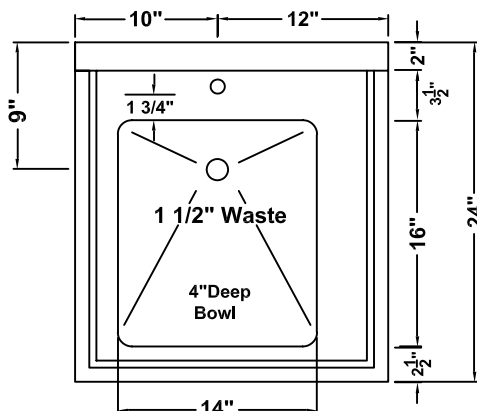


ADA-WS-SEC-40 0424

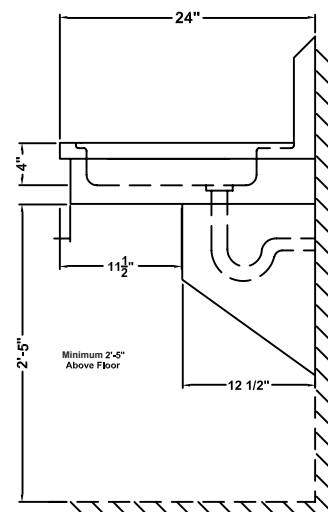
DRAWINGS



FRONT ELEVATION



PLAN



SIDE ELEVATION

SECURITY ADA WALL MOUNTED HAND SINK

Sink Only Models	Faucet Mounting	Sink w/ Faucet Models	Overall Size
□ ADA-WS-SEC-1DX	1 Hole Deck	□ ADA-WS-SEC-1D	24" x 22" x 31 7/8"

Specifications subject to change without notice.

ADA-WS-SEC-40 0424