

### Combination Ambient/Refrigerated Service Above Refrigerated Self-Service Case

- ☐ C3Z3667
- ☐ C3Z4867

Lengths include end panels  
36"L x 41-7/8"D x 67-1/2"H  
48"L x 41-7/8"D x 67-1/2"H



MODEL SHOWN: C3Z3667

#### STANDARD FEATURES

- Breeze™ w/EnergyWise s/c refrigeration
- Compressor air intake from rear and out front panel at toe kick.  
Front panel cannot be blocked.
- Full end panel w/mirror interior
- Integrated average product temperature of 40°F or less
- LED 3500K top & shelf lights
- Middle service area w/baffle
- Non-refrigerated upper display
- One year parts & labor; 5 year compressor warranty
- Rear wrapping board
- Self-service refrigerated lower display w/17" solid shelf

Features	Standard	Options
EXTERIOR COLOR	<input type="checkbox"/> Laminated (non-premium) Confirm pattern/grain direction	<input type="checkbox"/> Laminated (premium) Confirm pattern/grain direction <input type="checkbox"/> Stainless steel
INTERIOR COLOR	<input type="checkbox"/> Black	<input type="checkbox"/> Stainless steel
BASE	<input type="checkbox"/> Levelers	<input type="checkbox"/> 6"H legs <input type="checkbox"/> Casters
UPPER REAR	<input type="checkbox"/> Clear glass rear sliding doors w/o lock	<input type="checkbox"/> Reflective glass rear sliding doors w/o lock
ELECTRICAL CONNECT	<input type="checkbox"/> 6' straight blade power cord (self-cont.)	<input type="checkbox"/> 6' locking power cord (self-cont.)
MISCELLANEOUS		<input type="checkbox"/> Rear door lock (for both sets of doors) <input type="checkbox"/> Second year parts & labor warranty (excludes compressor)
ACCESSORIES		<input type="checkbox"/> Display steps (n/a w/shelf) <input type="checkbox"/> Night curtain, retractable, non-locking <input type="checkbox"/> Removable wire security cover, locking

# Oasis®

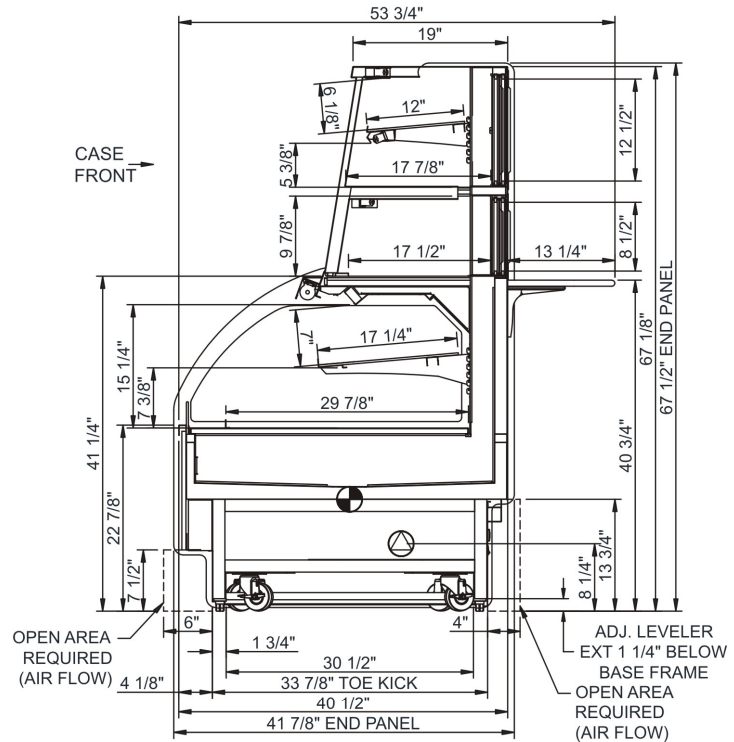
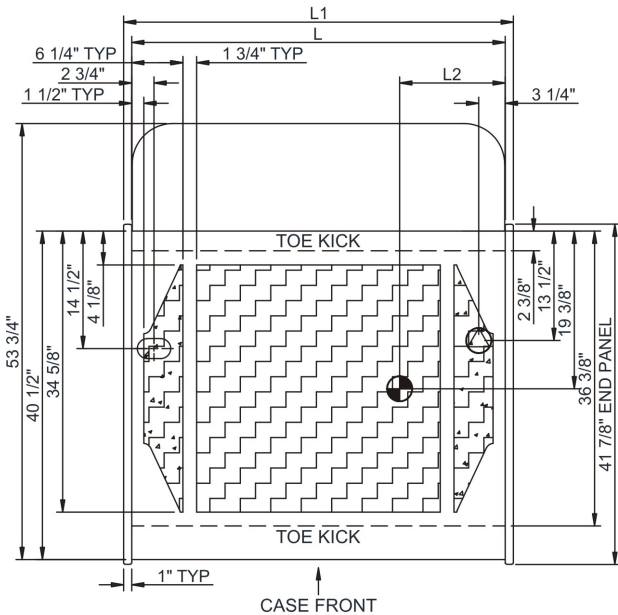
## Product Specifications

**Intended Environment:** Type I - Designed to operate in ambient conditions of 75°F with 55% relative humidity unless noted otherwise in system information below.

Zone	Intended Product To Be Displayed	Warmest Avg Prod Temp ° F
1	Packaged / unpackaged refrigerated products	40

**PLAN VIEW**

**SIDE VIEW**



**NOTE: ALL DIMENSIONS APPROXIMATE**

- ELECTRICAL JUNCTION BOX**  
(SUPPLIED WITH 6\"/>

- REFRIGERATION LINE CONNECTION.**
- REMOTE FLOOR SINK & UTILITIES ACCESS AREA.**

- SELF-CONTAINED CASE SERVICE ACCESS AREA.**
- DRY CASE SERVICE ACCESS AREA.**

### Model Technical Specifications

Model	L"	L1"	L2"	System Circuit Volts			Phs	Freq	Amps ***	Watts	Wires	NEMA Plug	SST	Conv. Rack BTUH	Para. Rack BTUH	Est Wt
C3Z3667	N/A	36.00	7.00	Self-Contained	Circuit #1	110-120	1	60	14.66	1,250	2+G	5-20P or L5-20P	N/A	N/A	N/A	900
C3Z4867	N/A	48.00	13.00	Self-Contained	Circuit #1	110-120	1	60	16.00	1,509	2+G	5-20P or L5-20P	N/A	N/A	N/A	1,000

\*\*\* Does not include electric defrost on freezer models.

### Regulatory Approvals:

All Models	<p>Accordance with AHRI Std 1200</p> <p>ETL Listed to UL 471</p> <p>ETL Listed to CAN/CSA 22.2 No. 120</p> <p>ETL Sanitation to NSF 7</p>
------------	---



In Accordance with  
**AHRI Std 1200**

**DOE 2017**  
Energy Efficiency  
Compliant

### Important Notes:

- 1) **ELECTRICAL NOTE:** If GFCI is required, a GFCI breaker MUST be used in lieu of a GFCI receptacle
- 2) 43" minimum door entry clearance required (without shipping skid).
- 3) Units are supplied with levelers. They must be adjusted during installation to ensure the unit is level and plumb. Dimensions reflect levelers extended 1 1/4". 4) Compressor air ventilation is out the front panel. Front panel cannot be blocked.

**⚠ WARNING:** This product can expose you to chemicals, including Urethane (Ethyl Carbamate), which are known to the State of California to cause cancer and birth defects or other reproductive harm. For more information go to [www.P65Warnings.ca.gov](http://www.P65Warnings.ca.gov).