



DWG# **5850** REV. **T**

ITEM(S) **MET-TBL 001**

DWG TYPE: **PRODUCTION**

TITLE: **METAL EURO TABLE WITH REMOVABLE SHELVES**

MATERIAL: **METAL/PLASTIC**

FINISH: **SEE ORDER**

DRAWN BY: **T.A.** DATE **10/13/2004**

CHECKED BY: **S.C.** DATE **10/27/2004**

APPROVED BY: DATE

APPROVED BY: DATE

RELEASE FOR PRODUCTION DATE

USED ON:

SCALE: 1:12 SHEET # 1 OF 17

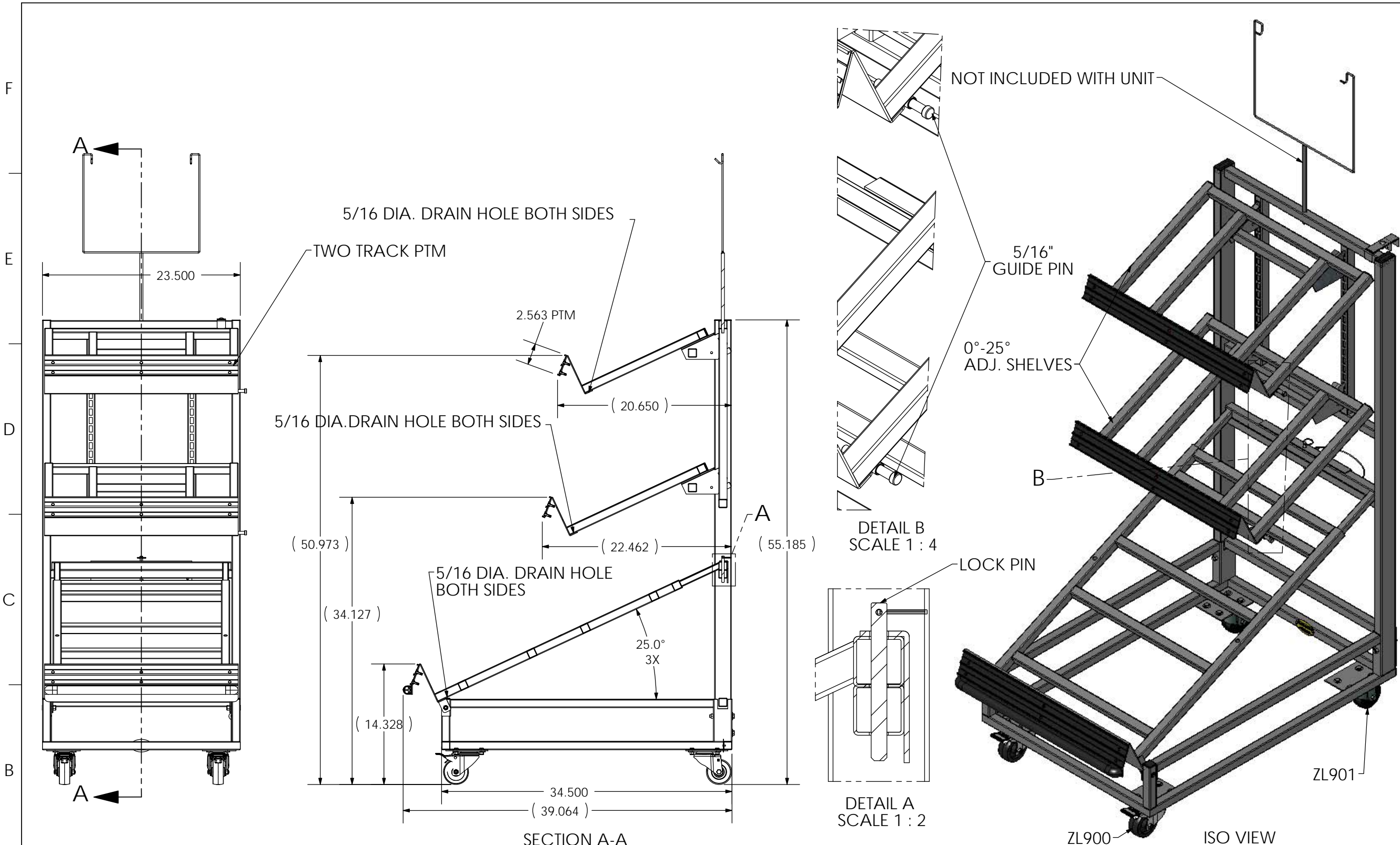
SIZE: **B** TITLE BLOCK: TB-2008

DRAWN ON: **SOLIDWORKS**

UNLESS OTHERWISE SPECIFIED DIMENSIONS ARE IN INCHES AND TOLERANCES ARE:
 FRACTIONS ±1/16" DECIMALS .X ±.060 .XX ±.030 .XXX ±.015 ANGLES ±1°

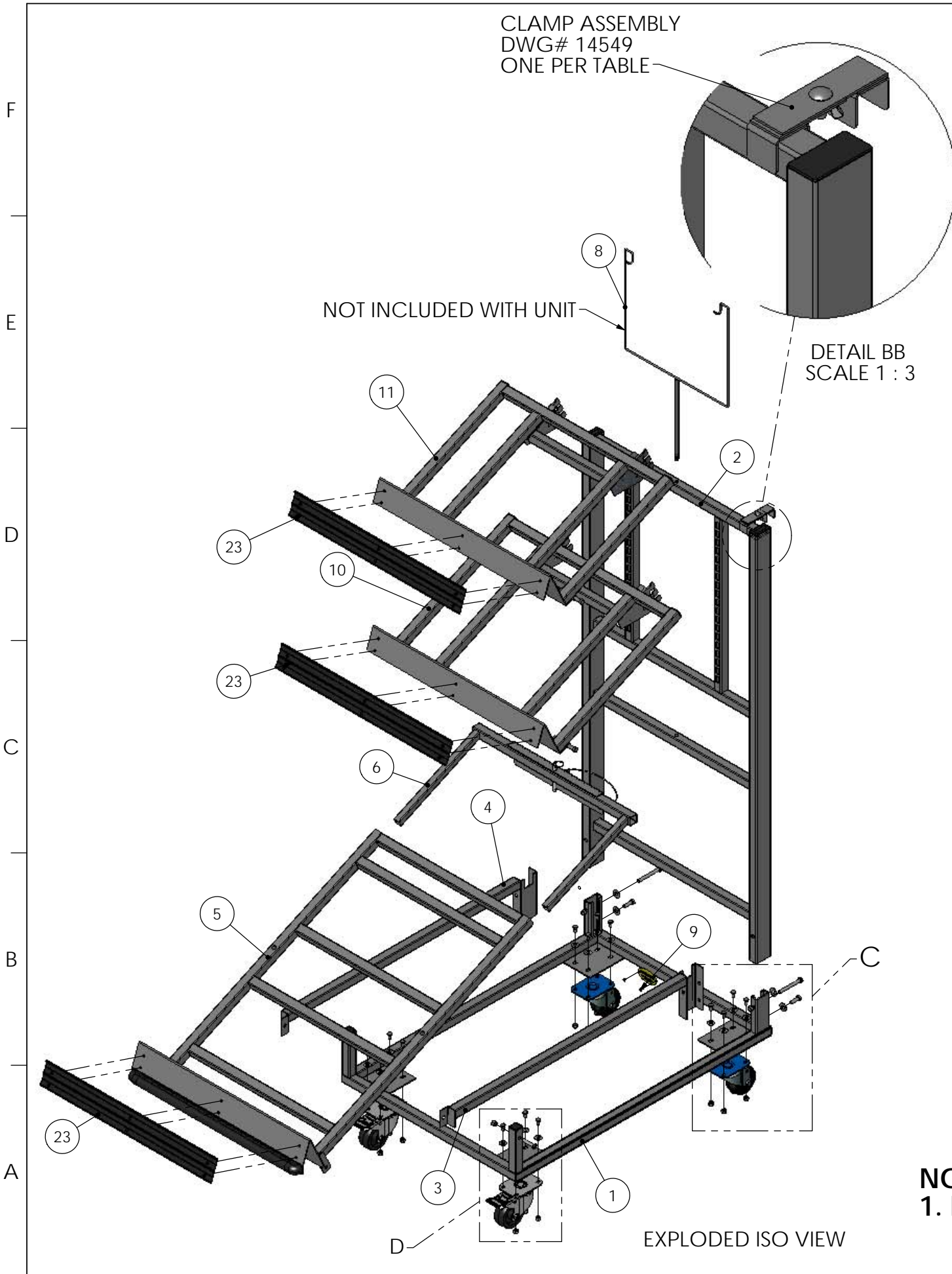
THIS DOCUMENT CONTAINS INFORMATION PROPRIETARY AND CONFIDENTIAL TO THE MARCO COMPANY AND MAY NOT BE REPRODUCED, PUBLISHED, OR DISTRIBUTED IN ANY FORM OR DISCLOSED IN WHOLE OR IN PART WITHOUT THE AUTHORIZATION OF THE MARCO COMPANY. ALL RIGHTS RESERVED, COPYRIGHT 2007 THE MARCO COMPANY.

DO NOT SCALE DRAWING

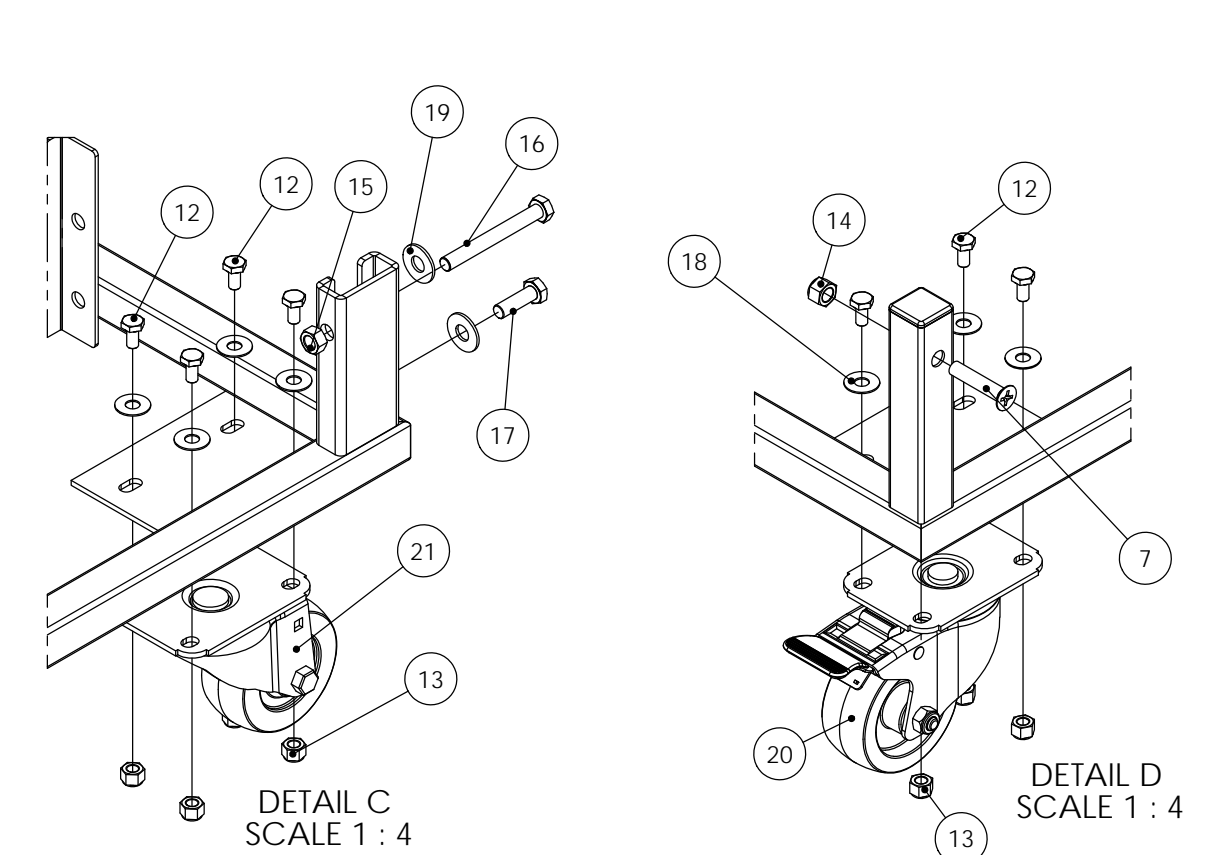


NOTE:
1. REMOVE ALL BURRS AND SHARP EDGES


REV.	BY	CHECKED	DESCRIPTION	APPROVED	DATE
T	TN	SC	ADD (3) ITEM VVS-2TRACK KIT FROM DWG #16900 TO THE SHELVES FRONT.		3-25-10
S	TN	SC	ADD CLAMP TO UNIT	KATRINA L.	12-9-08
R	TN	SC	BOTTOM ANGLED LIP AND ANGLE IT DOWN AT 65° AND ADD BUMPER FROM EDGE TO EDGE	KATRINA L.	11-24-08
O	TN	SC	ADD 1" PLASTIC BUMPER TO BOTTOM LIP OF BOTTOM ANGLE SHELF.	KATRINA L.	10-14-08
P	TN	SC	REDUCE SIZE OF LIP ON SHELVES TO MATCH THE 2 TRACK PTM	KATRINA L.	6-10-08
O	TN	SC	SHOW VVS-SCH 2 TRACK AS DWG#10589-B		12/12/07
N	D.Z.	D.P.	REMOVED NUT FROM INSIDE U-CHAN.CHG. U-SHAPE TO 4 WAS 3,SEE LDR 5850 -N FOR MORE CHG.	T.A.	6/5/07
M	D.Z.	D.P.	ADDED SNAP PINS,VERTICAL PIN LOCK,SEE 5850-M LDR FOR CHANGES	T.A.	5/7/07
L	D.Z.	D.P.	ADD DRAIN HOLE TO 5850-14 SEE SHEET 1,7 & 12 ADD DRAIN HL. TO 5850-11 SEE SHT. 1,6 & 12	T.A.	5/2/07
K	T.A.	D.Z.	ADD 1/2"OD X 3/8" ID X 1" L FOR TOP&MID SHELF AND 5/16" X 2-3/4" ALIGN PIN	R.A.	4/5/07
REV.	BY	CHECKED	DESCRIPTION	APPROVED	DATE



ITEM #	QTY.	PART #	DESCRIPTION	COMMENTS
1	1	5850-ASSY-1	23-1/2" X 34-1/2" BASE FRAME	SEE SHEET 3
2	1	5850-ASSY-4	UPRIGHT FRAME	SEE SHEET 6
3	1	5850-ASSY-3	RIGHT SIDE RAIL ASSEMBLY	SEE SHEET 5
4	1	5850-ASSY-2	LEFT SIDE RAIL ASSEMBLY	SEE SHEET 4
5	1	5850-ASSY-5	BOTTOM SHELF	SEE SHEET 7
6	1	5850-ASSY-6	BOTTOM SHELF INSERT	SEE SHEET 8
7	2	ZB316	5/16-18 X 1-1/2" P FLAT HEAD	STOCK ITEM
8	1	7673-ASSY-1	SMALL GOALPOST	SEE DWG. 7673
9	1	ZN100	MARCO NAME PLATE WITH TWO ZE087 PER PLATE	STOCK ITEM
10	1	5850-ASSY-7	23" X 18" MIDDLE SHELF	SEE SHEET 9
11	1	5850-ASSY-8	23" X 16" TOP SHELF	SEE SHEET 10
12	16	ZA026	1/4-20 x 1/2" LONG	STOCK ITEM
13	16	ZD040	1/4-20 LOCK NUT NYLON INSERT	STOCK ITEM
14	2	ZC167	5/16-18 LOCK NUT NYLON INSERT	STOCK ITEM
15	2	ZDO60	5/16" - 18 HEX NUT	STOCK ITEM
16	2	????	5/16-18 x 2 3/4" LONG	STOCK ITEM
17	2	????	5/16-18 x 1" LONG	STOCK ITEM
18	16	ZA040	1/4" FLAT WASHER	STOCK ITEM
19	4	ZA030	5/16" FLAT WASHER	STOCK ITEM
20	2	ZL900	3" CASTER WITH LOCK	STOCK ITEM
21	2	ZL901	3" WHEEL NON-LOCKING CASTER	STOCK ITEM
22	1	14549 CLAMP	SEE DWG# 14549	
23	1	VV2-2TRACK KIT	PTM KIT	SEE DWG. 16900



NOTE:
1. REMOVE ALL BURRS AND SHARP EDGES.



3209 Marquita Drive
Fort Worth, Texas 76116
PH: (817) 244-8300

DWG#	5850	REV.	T
ITEM(S)	MET-TBL 001		
DWG TYPE:	PRODUCTION		
TITLE:	METAL EURO TABLE WITH REMOVABLE SHELVES		
MATERIAL:	METAL/PLASTIC		
FINISH:	SEE ORDER		
DRAWN BY:	T.A.	DATE	10/13/2004
CHECKED BY:	S.C.	DATE	10/27/2004
APPROVED BY:		DATE	
APPROVED BY:		DATE	
RELEASE FOR PRODUCTION		DATE	
USED ON:			
SCALE: 1:12	SHEET # 2 OF 17		
SIZE: B	TITLE BLOCK: TB-2008		
DRAWN ON:	SOLIDWORKS		
UNLESS OTHERWISE SPECIFIED DIMENSIONS ARE IN INCHES AND TOLERANCES ARE:			
FRACTIONS ±1/16"	DECIMALS .X ±.060 .XX ±.030 .XXX ±.015	ANGLES ±1°	
THIS DOCUMENT CONTAINS INFORMATION PROPRIETARY AND CONFIDENTIAL TO THE MARCO COMPANY AND MAY NOT BE REPRODUCED, PUBLISHED, OR DISTRIBUTED IN ANY FORM OR DISCLOSED IN WHOLE OR IN PART WITHOUT THE AUTHORIZATION OF THE MARCO COMPANY. ALL RIGHTS RESERVED, COPYRIGHT 2007 THE MARCO COMPANY.			
DO NOT SCALE DRAWING			