



Profit from the Eagle Advantage®

Specification Sheet

Short Form Specifications

Eagle Hand Sink, model HSA-10-FTWS. Constructed of type 304 stainless steel all-welded with deep-drawn positive drain sink bowl, basket drain, inverted "V" edge to prevent spillage, tubular mounting brackets, and splash mounted gooseneck faucet.



#HSA-10-FTWS

Options / Accessories

- ☐ P-trap
- ☐ Tail piece
- ☐ End splashes
- ☐ Side mount wall bracket
- ☐ Soap & towel dispenser
- ☐ MICROGARD® antimicrobial protection

EAGLE GROUP

100 Industrial Boulevard, Clayton, DE 19938-8903 USA

Phone: 302-653-3000 • Fax: 302-653-2065

www.eaglegrp.com

Foodservice Division: Phone 800-441-8440

MHC/Retail Display Divisions: Phone 800-637-5100

For custom configuration or fabrication needs, contact our **SpecFAB®** Division.

Phone: 302-653-3000 • Fax: 302-653-3091 • e-mail: specfab@eaglegrp.com

Item No.: _____
Project No.: _____
S.I.S. No.: _____

Hand Sink* with Tubular Wall Support

MODEL:

☐ **HSA-10-FTWS**

Design & Construction Features

- Type 304 stainless steel construction.
- Inverted "V" edge rim retards spillage.
- All-welded construction.
- Positive drain bowl.
- One-piece, deep-drawn, seamless bowl.
- 1" (25mm)-diameter tubular wall brackets included for added strength.
- Includes 1½" (38mm) stainless steel basket drain and splash mounted gooseneck faucet.

* Non-electric. We offer sinks with electric soap dispenser and faucets.

Certifications / Approvals



Spec sheets available for viewing, printing or downloading from our online literature library at www.eaglegrp.com

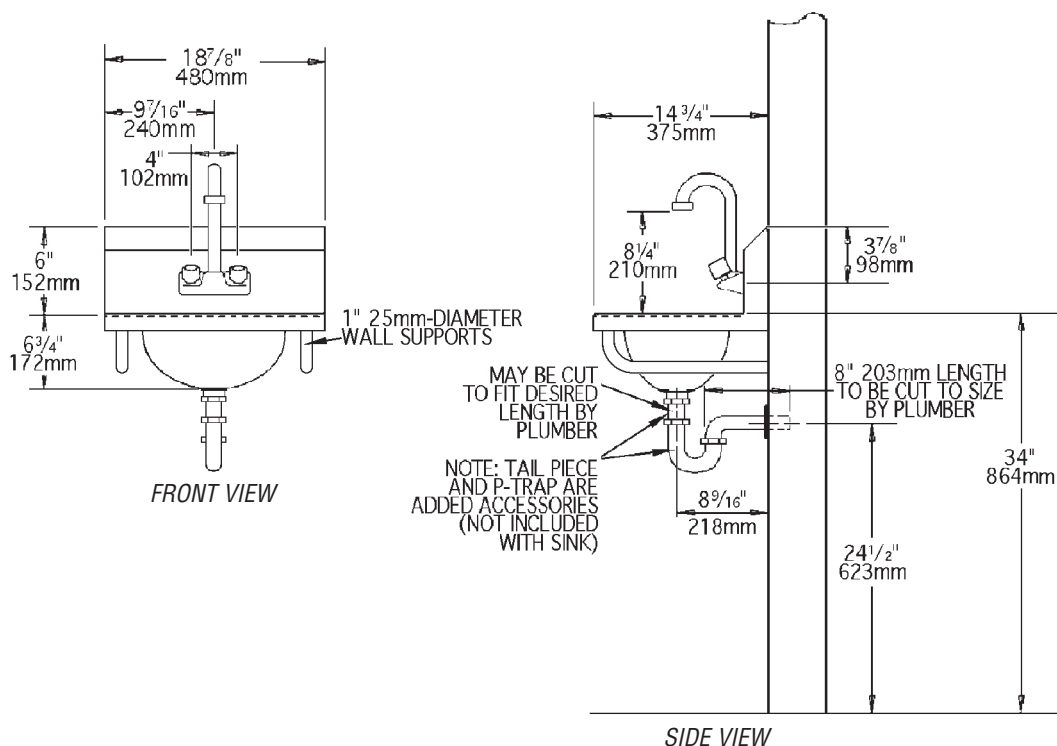
Eagle Foodservice Equipment, Eagle MHC, SpecFAB®, and Retail Display are divisions of Eagle Group. ©2010 by the Eagle Group



Profit from the Eagle Advantage®

Item No.: _____
 Project No.: _____
 S.I.S. No.: _____

Hand Sink with Tubular Wall Support



model #	bowl size		overall size		weight	
	width	length x depth	width x length x height		lbs.	kg
	in.	mm	in.	mm		
HSA-10-FTWS	9 $\frac{3}{4}"$	13 $\frac{1}{2}"$ x 6 $\frac{3}{4}"$	14 $\frac{3}{4}"$ x 18 $\frac{7}{8}"$ x 12 $\frac{3}{4}"$	375 x 480 x 324	20	9.0

EAGLE GROUP
 100 Industrial Boulevard, Clayton, DE 19938-8903 USA
 Phone: 302-653-3000 • Fax: 302-653-2065
www.eaglegrp.com

Foodservice Division: Phone 800-441-8440
 MHC/Retail Display Divisions: Phone 800-637-5100

Printed in U.S.A.
 ©2010 by Eagle Group
 Rev. 04/10

Spec sheets available for viewing, printing or downloading from our online literature library at www.eaglegrp.com

Although every attempt has been made to ensure the accuracy of the information provided, we cannot be held responsible for typographical or printing errors. Information and specifications are subject to change without notice. Please confirm at time of order.