

*This Space for Architect/Engineer Approval*

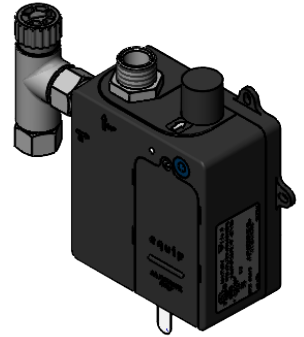
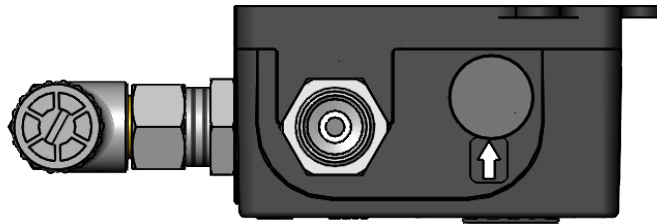
Job Name \_\_\_\_\_ Date \_\_\_\_\_

Model Specified \_\_\_\_\_ Quantity \_\_\_\_\_

Customer/Wholesaler \_\_\_\_\_

Contractor \_\_\_\_\_

Architect/Engineer \_\_\_\_\_



Water Resistant Faucet  
Sensor Cable Connection  
(Remove Protective Cap  
to Connect Cable)

1/2" NPSM Male Outlet

Removable  
Strainer

1/2" NPSM Female  
Swivel Coupling Nut

4" x 4 3/8" x 2 3/16" Deep  
[102mm x 111mm x 56mm]  
Water Resistant Control Module  
Box. AC or DC Operated w/ (4)  
AA Batteries.

Water Resistant AC Adapter  
Cable Connection Port  
(Remove Rubber Plug  
to Connect Cable)

1 1/8"  
[28mm]

2 1/16"  
[52mm]

2 13/16"  
[72mm]

3 1/2"  
[88mm]

Battery Cover



Model Number

**5EF-0001C**

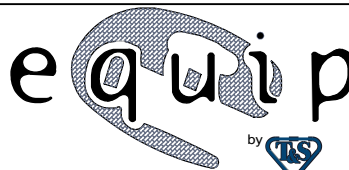
Product Specifications:

**equip Sensor Faucet Control Module with Filter Tee  
(Black Module Housing)**

Product Compliance:

ASME A112.18.1 / CSA B125.1  
NSF 61 - Section 9  
NSF 372 (Low Lead Content)  
UL 1951

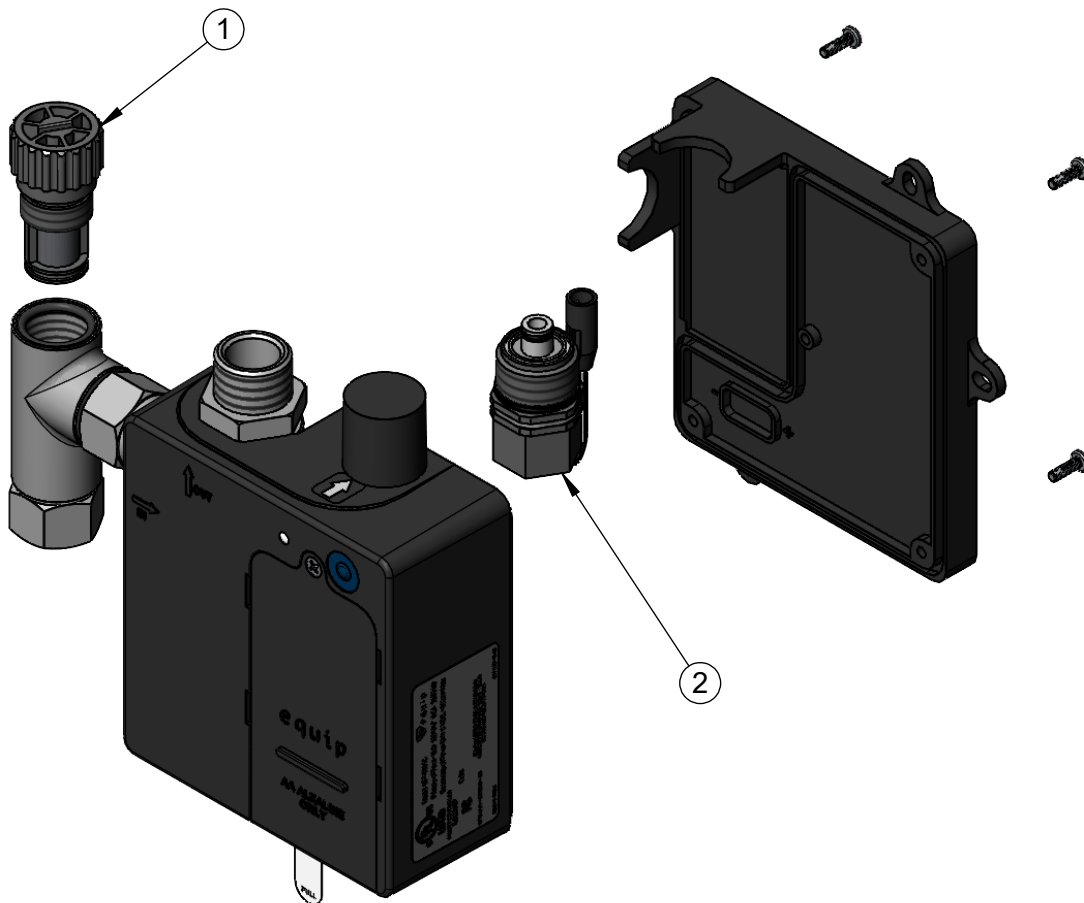
equip  
Foodservice  
Accessories



2 Saddleback Cove, P.O. Box 1088  
Travelers Rest, South Carolina 29690  
Phone: 800.891.4808 Fax: 800.868.0084  
equip.tsbrass.com

Drawn: GEF Checked: JMD Approved: JHB Date: 06/17/25 Scale: 1:4 Sheet: 2 of 2

ITEM NO.	SALES NO.	DESCRIPTION
1	EC-FILTER	Replacement Filter
2	020330-45	Solenoid Valve, M22 x 2 Male Thd



Model Number  <b>5EF-0001C</b>	Product Specifications:  <b>equip Sensor Faucet Control Module with Filter Tee (Black Module Housing)</b>			
Product Compliance:  ASME A112.18.1 / CSA B125.1 NSF 61 - Section 9 NSF 372 (Low Lead Content) UL 1951	<div> <div>             equip Foodservice Accessories           </div> <div> </div> </div>		2 Saddleback Cove, P.O. Box 1088 Travelers Rest, South Carolina 29690 Phone: 800.891.4808 Fax: 800.868.0084 <a href="http://equip.tsbrass.com">equip.tsbrass.com</a>	
Drawn: GEF	Checked: JMD	Approved: JHB	Date: 06/17/25	Scale: NTS
Sheet: 2 of 2				