



Model: _____ Item #: _____ Date: _____

Project: _____ Qty: _____ Approved By: _____

Royal Series One Compartment Bar Sinks

Royal Series Underbar



KR19-31C

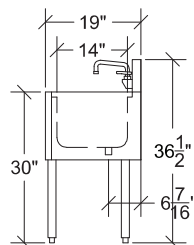
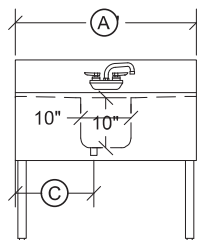
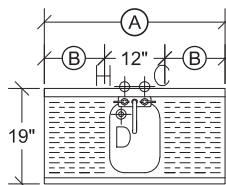
Standard Features

- Royal Series faucets & drains w/ overflows included
- Models ending '-E' include electronic sensor faucets
- Models ending '-DS' include plastic perforated basket (30-160)
- 1-1/2" left rear corner drains (Model 23-122)

Specifications

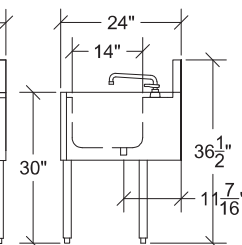
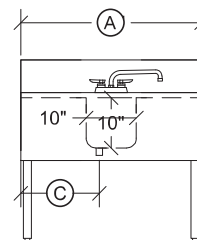
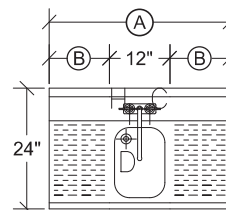
Sink Bowl	<ul style="list-style-type: none"> ▪ 20 gauge stainless steel 10" x 14" x 10" deep ▪ Furnished with 1-1/2" IPS rear corner drain and 7-1/2" overflow pipe
Drainboard	<ul style="list-style-type: none"> ▪ 20 gauge stainless steel reinforced with welded braces every 6"
Front Apron	<ul style="list-style-type: none"> ▪ 20 gauge stainless steel clad over 20 gauge galvanized steel
Sides	<ul style="list-style-type: none"> ▪ 20 gauge stainless steel
Backsplash	<ul style="list-style-type: none"> ▪ 20 gauge stainless steel
Back & Bottom	<ul style="list-style-type: none"> ▪ 20 gauge galvanized steel
Legs	<ul style="list-style-type: none"> ▪ 1-5/8" tubular 16 gauge stainless steel with grey plastic bullet foot
Plumbing	<ul style="list-style-type: none"> ▪ Hot/Cold Water: 1/2" IPS ▪ Drain: 1-1/2" IPS
Faucets	<ul style="list-style-type: none"> ▪ KR19-1C, KR19-12DS, KR19-31C, KR24-1C, KR24-12DS include Royal Series 4" Center Wall Mount Faucet ▪ KR24-31C include Royal Series 4" Center Deck Mount Faucet ▪ KR19-1C-E, KR24-1C-E include 4" Center Wall Mount Electronic Sensor Faucet

Model	Depth (Front to Back)	Length (A)	Drainboard Size (B)	Left Side to Drain (C)	Bowls	Bowl Location	Wgt. (lbs.)
KR19-1C	19"	12"	-	6"	1	Center	40
KR19-1C-E	19"	12"	-	6"	1	Center	40
KR19-12DS	19"	12"	-	6"	1	Center	40
KR19-31C	19"	36"	(2) 12"	16"	1	Center	48



NOTE: Letter at end of Model Number represents Bowl Location

Model	Depth (Front to Back)	Length (A)	Drainboard Size (B)	Left Side to Drain (C)	Bowls	Bowl Location	Wgt. (lbs.)
KR24-1C	24"	12"	-	6"	1	Center	45
KR24-1C-E	24"	12"	-	6"	1	Center	45
KR24-12DS	24"	12"	-	6"	1	Center	45
KR24-31C	24"	36"	(2) 12"	16"	1	Center	53



WARNING: Plumbing connections should be made by qualified personnel who will observe all applicable plumbing, sanitary and safety codes.

