



DCM-500B_K-OS

OPTI-SERVE SERIES SANITARY CUBELET ICE MACHINE/DISPENSER




DCM-500B_K-OS
08/13/25
Item # 13147K

Item #: _____
Project: _____
Qty: _____
AIA#: _____

Features

- ▶ Durable stainless steel exterior
- ▶ Opti-Serve touchless ice and water
- ▶ Environmentally friendly R290 hydrocarbon refrigerant
- ▶ Stainless steel auger with greaseless bearing

- Up to 597 lbs. of ice production per 24 hours
- Built-in storage capacity of 1.3ft³/40 lbs.*
- Advanced CleanCycle24™ design 
- 2 second flush cycle every hour
- Corrosion resistant stainless steel exterior
- Easy to chew, cubelet ice
- Self-contained design reduces opportunities for cross contamination
- Dispenses ice and water

Warranty:

3 Year Parts & Labor on entire machine.
5 Year Parts on Compressor; air-cooled condenser coil.
Valid in United States, Canada, Puerto Rico and U.S. Territories. Contact factory for warranty in other countries.

*Rated in accordance with AHRI Standard 820(I-P). Capacity based on 100% of total volume x 30 lb/ft³ average density of ice.

Shipping: (LxWxH) 33" x 25.25" X 46" Volume: 22.18ft³

W x D x H
26" x 22 1/2" x 40"

SD-500
25 9/10" x 22" x 32 3/4"



DCM-500BAK-OS

Air-Cooled
Shown with optional
SD-500 Stand

DCM-500BWK-OS

Water-Cooled

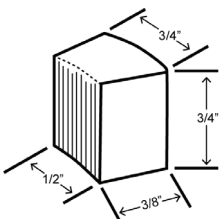
**Hands-free sensor designed for
use with opaque containers.*

*Not intended for outdoor use -
avoid placement in direct sunlight.*



| Condenser | Model | ICE PRODUCTION | | WATER USAGE | | ELECTRICAL | | | | | | | |
|--------------|---------------|---------------------------------------|-----------|--------------------------------|--------------------------------|---------------------------|----------------------------|----------|-----------|--------------------|-------------------|---------------|---------------|
| | | Air / Water Temp Lbs. per 24 hours | | Potable | Condenser | kWh Used | Min. Circuit/ Max. Fuse | Amperage | Voltage | Circuit Wires | Heat Rejection | Refrigerant | Net / Ship |
| | | 70°/ 50°F | 90°/ 70°F | Gal. per 100 lbs. 90°/ 70°F | Gal. per 100 lbs. 90°/ 70°F | per 100 lbs. 90°/ 70°F | Size | | | (including ground) | BTU/hr. | Charge Amount | Weight (lbs.) |
| Air-Cooled | DCM-500BAK-OS | 597 | 470 | 12.0 | N/A | 4.7 | 20A | 6.7A | 115V/60/1 | 3 | 6,100 | 4.7 oz. | 251 / 255 |
| Water-Cooled | DCM-500BWK-OS | 610 | 520 | 12.0 | 112 | 3.85 | 20A | 6.7A | 115V/60/1 | 3 | 5,600 | 4.6 oz. | 245 / 255 |

Cubelet Dimensions*



* approximate size in inches, image not to scale

Operating Limits

- Ambient Temp Range 45 - 100°F
- Water Temp Range 45 - 90°F
- Water Pressure 10 - 113 PSIG
- Voltage Range 108 - 127V
- If GFCI is required, a GFCI breaker MUST be used in lieu of GFCI receptacle

Service

- Allow 6" (15 cm) clearance at rear and sides for proper air circulation and ease of maintenance/ service should they be required. Allow 24" (61 cm) clearance at top to allow for removal of the auger.

Not intended for outdoor use - avoid placement in direct sunlight.

Plumbing

- Ice maker Water Supply Line: Min. 1/4" Nominal ID Copper Water Tubing or Equivalent
- Ice maker Drain Line: Min. 3/4" Nominal ID Hard Pipe or Equivalent Water-Cooled Model (Lines Must Be Independent of Ice maker)
- Condenser Water Supply Line: Min. 1/4" Nominal ID Copper Water Tubing or Equivalent
- Condenser Drain/Return Line: Min. 1/4" Nominal ID Hard Pipe (open drain system) or Copper Water Tubing (closed loop system) or Equivalent

Water Filter

Please refer to water filter specification sheet for recommendations.

Hoshizaki reserves the right to change specifications without notice.

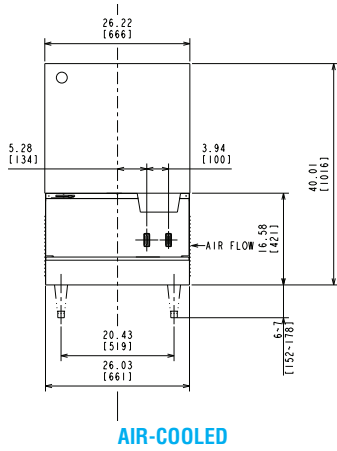


DCM-500B_K-OS

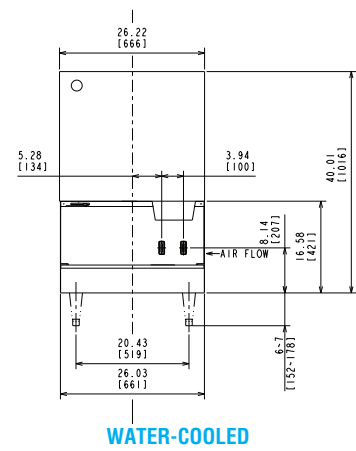
OPTI-SERVE SERIES
SANITARY CUBELET ICE MACHINE/DISPENSER

DCM-500B_K-OS
08/13/25
Item # 13147K

FRONT VIEW

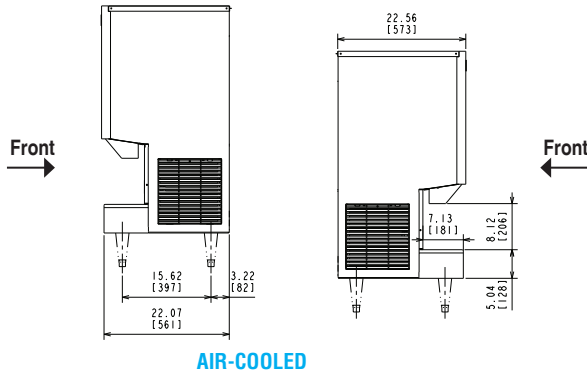


AIR-COOLED

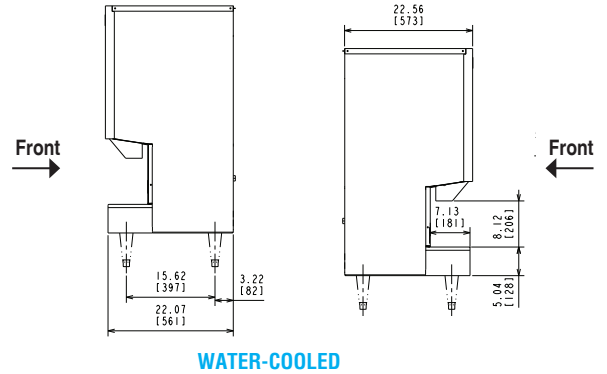


WATER-COOLED

SIDE VIEW

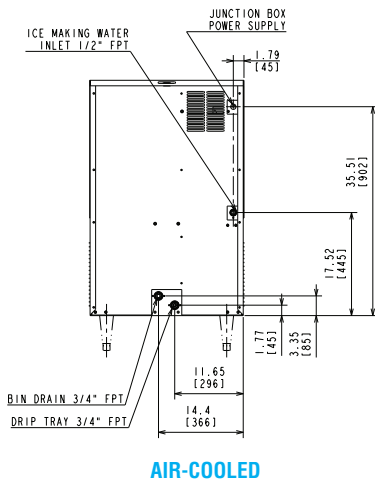


AIR-COOLED

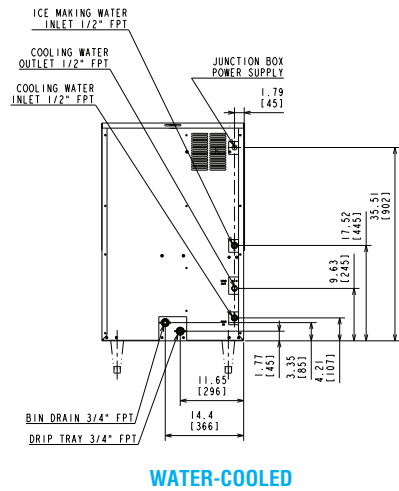


WATER-COOLED

REAR VIEW

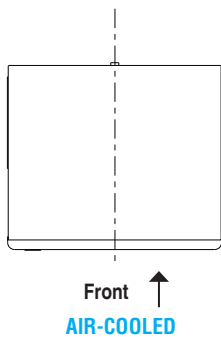


AIR-COOLED

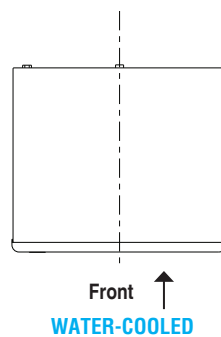


WATER-COOLED

TOP VIEW



AIR-COOLED



WATER-COOLED