

## Glass Storage Cabinets

## Silver Series Underbar



18-GSB1



18-GSB3  
Middle Shelf (2 racks)

Model	Description	20" x 20" Glass Rack Capacity
18-GSB1	Glass Storage with Drainboard Top and Adjustable (3) Rack Slides	3
18-GSB3	Glass Storage with Drainboard Top and Middle Shelf	2

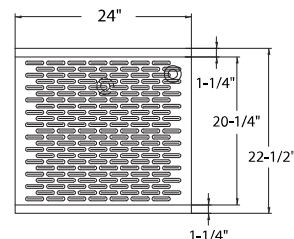
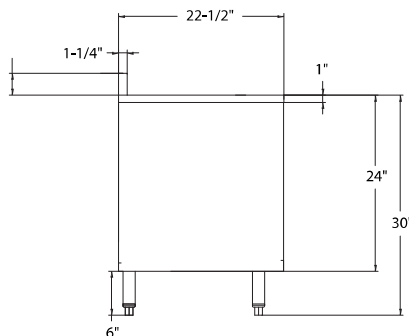
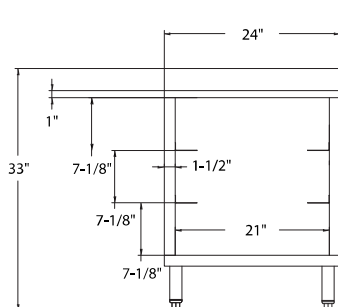
## Standard Features

- Embossed drainboard top
- Durable stainless steel construction
- Fits (3) 20" x 20" Glass Racks (not included) (18-GSB1)
- Fits (2) 20" x 20" Glass Racks (not included) (18-GSB3)
- 22-1/2" front to back depth
- 3" H backsplash

## Specifications

<b>Drainboard</b>	<ul style="list-style-type: none"> <li>▪ 20 gauge embossed stainless steel reinforced with welded braces every 6"</li> <li>▪ 3/4" radius on all vertical and horizontal edges</li> </ul>
<b>Material</b>	<ul style="list-style-type: none"> <li>▪ 20 gauge 304 stainless steel body</li> </ul>
<b>Backsplash</b>	<ul style="list-style-type: none"> <li>▪ 3"</li> </ul>
<b>Legs</b>	<ul style="list-style-type: none"> <li>▪ 6" tubular (1-5/8" diameter) 16 gauge stainless steel with grey plastic bullet foot</li> </ul>
<b>Drains</b>	<ul style="list-style-type: none"> <li>▪ (2) 1" brass threaded drains</li> </ul>

### 18-GSB1



### 18-GSB3

