

PORT AUTHORITY

Port Authority® Women's Essential Rain Jacket  
L407



A year-round must-have, this fully seam-sealed 8K/5K w aterproof, breathable 2.5-layer jacket has a DWR finish. It packs easily and gives great w ater-repellent, w ind-resistant performance.

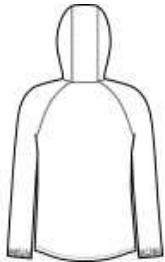
- 100% polyester shell bonded to a w aterproof laminate film w ith DWR finish
- 8,000MM fabric w aterproof rating
- 5,000G/M2 fabric breathability rating
- Interior grid print
- Waterproof center front zipper
- Interior storm flap w ith chin guard
- Front zippered pockets
- Elastic cuffs

CARE INSTRUCTIONS

Machine w ash cold w ith like colors. Only non-chlorine bleach w hen needed. Tumble dry low . Cool iron if necessary. Do not Dry Clean.

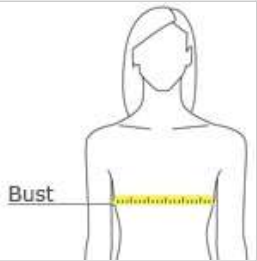


front



back

HOW TO MEASURE



BUST  
Measure under the arm and around the fullest part of the bust w ith arms dow n, keeping tape horizontal.

SIZE CHART

	XS	S	M	L	XL	XXL	3XL	4XL
Size	2	4/6	8/10	12/14	16/18	20/22	24/26	28/30
Bust	32-34	35-36	37-38	39-41	42-44	45-47	48-51	52-55

COLOR INFORMATION

Please note: PMS code information is shown only when an exact match is available.



Deep Black  
PMS BLACK C



Graphite  
PMS 432C



True Navy  
PMS 533C



True Royal  
PMS 7687C