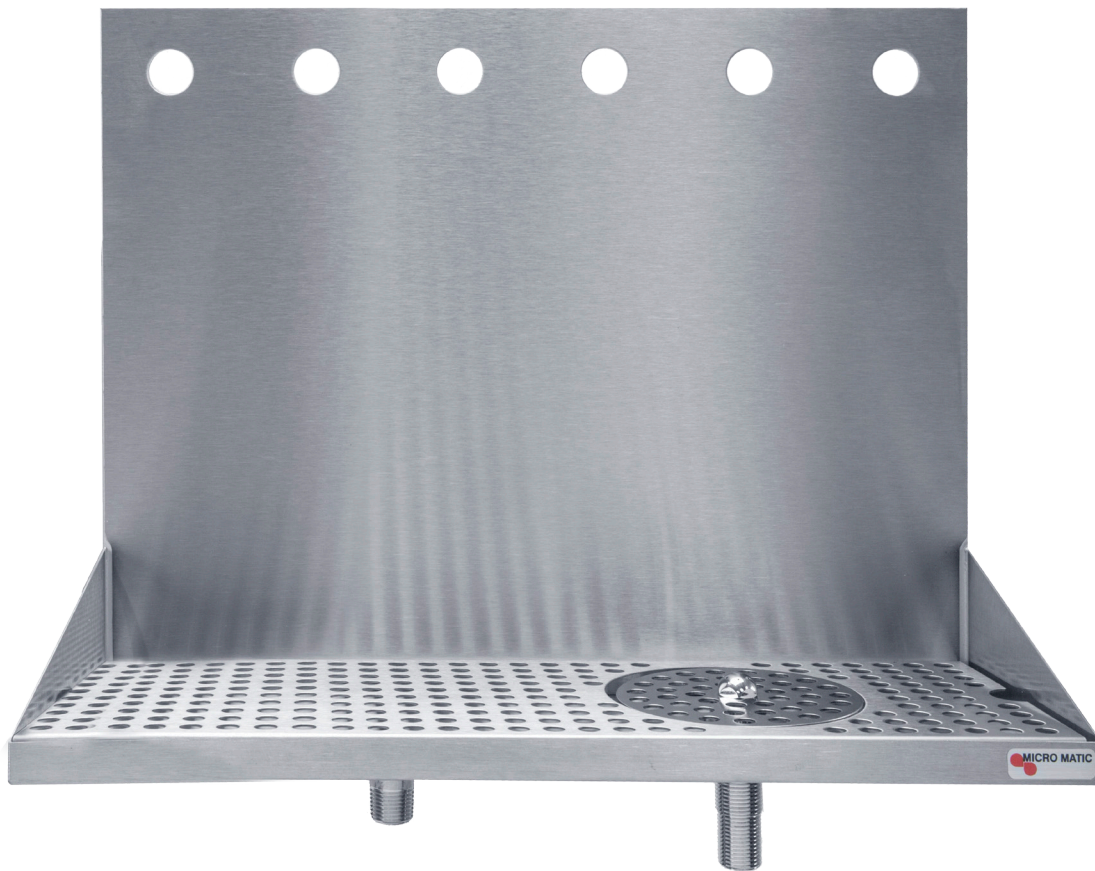




DRIP TRAY


WALL MOUNT 24" WITH GLASS RINSER

- Add European style while creating dispense excitement
- Condition the glass before pouring – invert glass, push down on sprayer for cold water rinsing
- Easy installation: beverage shanks mount through and secure tray to wall
- Welded corners, finished smooth for safety and appearance



DP-322ELD-6GR

Brushed Stainless Steel

 Glass rinser
assembly only.

www.micromatic.com • 1 (866) 327-4159

WALL MOUNT WITH GLASS RINSER

Job Number: _____ Location: _____

Part No.	Dimensions	Description	Shipping Weight
 DP-322ELD-6GR	24" Width	6 Holes	TBD

Rinser Water Inlet Installation

- Always check local plumbing codes first.
- Install in-line water regulator set at 15 PSI from the street water supply (no greater, perfect operating pressure).
- Install in-line one way check valve from the street water supply (prevents pressure drop which can cause leaking).
- Install in-line shutoff for the rinser system from the street water supply (this must be turned off nightly).
- If teed into soda system make sure system can handle the increased water demand. Have plumber install a 45° 1/2" O.D. barb for the drains if line is not hard plumbed into the system.
- Install a shutoff for the rinser water supply if line is not hard plumbed into the system.

Dimensions

