

The Apollo is a perennial favorite, combining value, comfort, adjustability and quality, and featuring a breathable, color-coordinated mesh back that matches the comfortably contoured and padded waterfall seat.

specifications

Overall Dimensions

26" x 20" x 40.5-46.5"
(W x D x H)

Seat

20.5" x 19" (W x D)

Back

19" x 25" (W x H)

Seat Height

19" (at lowest point)
22.5" (at highest point)

Weight

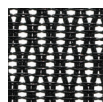
55.5 lbs

Cube

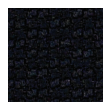
7.2

standard colors

black mesh
PM01



black fabric
5806



multi-
function
w/ ratchet
back
MFHB9SL



shown with
optional headrest

features

Tilt Tension Control

Recline rate adapts to weight of user.

Center-Tilt

Chair tilts from a point under the center of the seat allowing user to rock back and forth. Tension Adjustable.

Tilt Lock

Locks out tilt function.

Back Angle Adjustment

Sets back angle for personalized comfort in reclined position.

Seat Height Adjustment

Sets seat height to desired position relative to floor.

Waterfall Seat

Front of cushion slopes to reduce pressure on the back of the knees.

Forward Seat Tilt

Changes angle of seat to enable proper ergonomic posture while using computer keyboard.

Seat Depth Adjustment

Adjusts seat depth relative to back.

Width Adjustable Arms

Adjusts arms in or out for proper ergonomic positioning.

Arm Height Adjustment

Adjusts arm up or down for proper ergonomic positioning while seated.

Seat Angle Adjustment

Seat angle will lock in any position from front to back.

2.8" Ratchet Back height Adjustment

Backrest easily adjusts up or down relative to seat for personalized lumbar region support and comfort.

option

**polished
steel base**
S330C

headrest
HRAP99

eurotech
a raynor group company

1.800.637.0005

email: customerservice@raynorgroup.com
catalog requests: literature@raynorgroup.com

fabrix | custom
upholstery