



ENVISION ULTRA STACK

High Capacity | Beverage Merchandiser

From airports and offices to medical centers and beyond, the high capacity and reliable vending machines cater to the diverse needs of different locations. Their robust construction ensures uninterrupted service and optimal performance, regardless of their placements.



SCAN TO LEARN MORE



ENVISION ULTRA STACK

High Capacity | Beverage Merchandiser

CONTOURED SIGNFACE

The main advertising display boasts a large curved face to enhance visibility, aesthetics, and readability from multiple angles.

FLAVOR CARD OR LIVE DISPLAY

The operator has the option of displaying either a flavor card or live product.

LARGE SELECTION BUTTONS

The user interface features large selection buttons for easy navigation and enhanced accessibility.

STACK HIGH CAPACITY

The beverage stacking method is the most common that allows for maximum flexibility during product loading.

HIGH EFFICIENCY REFRIGERATION

The energy efficient R-290 refrigeration system is a cutting-edge technology designed to provide exceptional cooling performance while minimizing energy consumption and environmental impact.

LED LIGHTING

Bright, long-lasting illumination while consuming significantly less power than traditional lighting sources.

LED DISPLAY

High-definition, energy-efficient visual screen that produce vibrant, sharp images.

BILL ACCEPTOR

Efficiently processes various denominations while ensuring accuracy and security.

CREDIT/DEBIT & MOBILE PAYMENT SYSTEM (OPTIONAL)

Make electronic transactions using smartphones or a mobile device, allowing to swiftly and effortlessly pay for goods.

CUSTOM GRAPHICS

Custom designed visual elements, such as logos, illustrations, or other visual assets, tailored to a specific brand.



EnVision ULTRA STACK High Capacity Beverage Merchandiser

Selections	10
Capacity	680 12 oz Cans/300 20 oz PET Bottles
Selection Pricing	\$0- \$9.99
Payment Systems	Coin Acceptor, Bill Acceptor, Card Reader Optional
Electrical Requirements	115 VAC/60Hz, 3.8 AMPS
Dimensions	72.5" H X 39" W X 33.5" D
Shipping Weight	525 Lbs.
Standard Features	Flavor Cards
Options	Custom Graphics, Live Display

Pending NAMA & UL Approvals

**NAMA
LISTED**

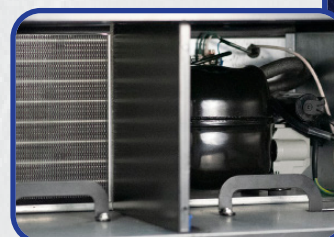
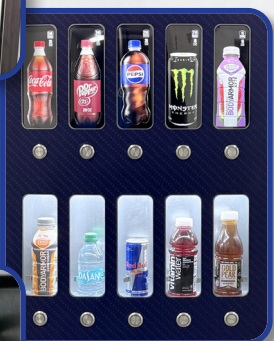


seaga.com • 815.297.9500 • info@seaga.com
700 Seaga Dr., Freeport, Illinois USA



HIGH CAPACITY VERTICAL STACKING COLUMNS

FLAVOR CARD OR LIVE DISPLAY OPTION



HIGH EFFICIENCY REFRIGERATION